

VLH 47XX/48XX

4-POST LIFTS

19.05.2019

VLH 4740 LA (4 000 kg): Platform length 4 800 mm

VLH 4840 LA (4 000 kg): Platform length 5 300 mm

VLH 4850 LA (5 000 kg): Platform length 5 200 mm

VLH 4860 A (6 000 kg): Platform length 5 720 mm

Electrohydraulic 4-post lifts:

- Precision lift for cars and vans
- With integrated auxiliary lift (VLH 4740LA, VLH 4840LA, VLH 4850LA)



Configuration:

- Front recesses for turntables, and rear side slip plates, for wheel alignment
- **Optional:** Additional 2 t or 3 t jacking beam
- High-precision locking bars



Technical details/dimensions

VLH 4740 LA

VLH 4840 LA

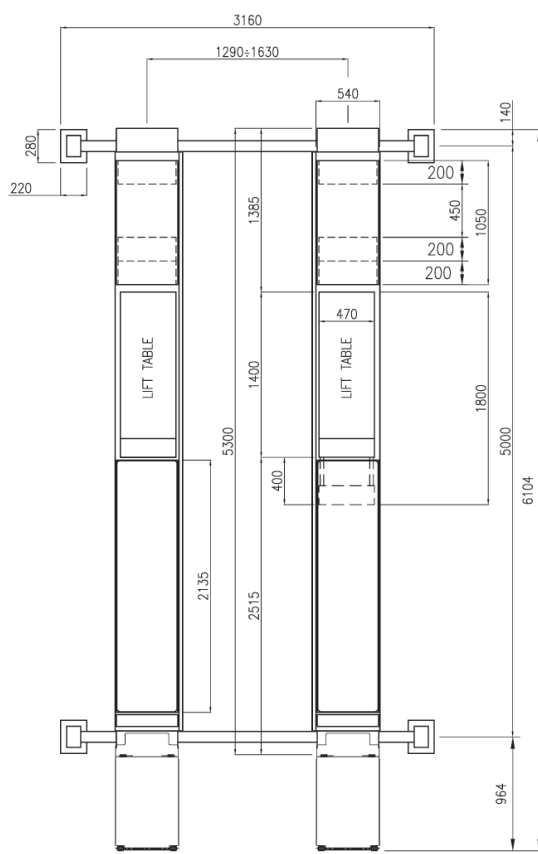
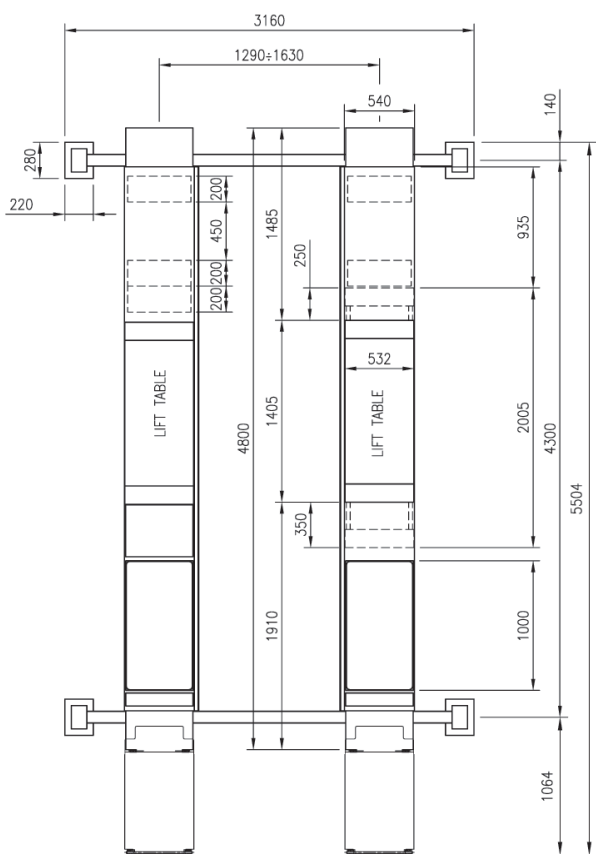
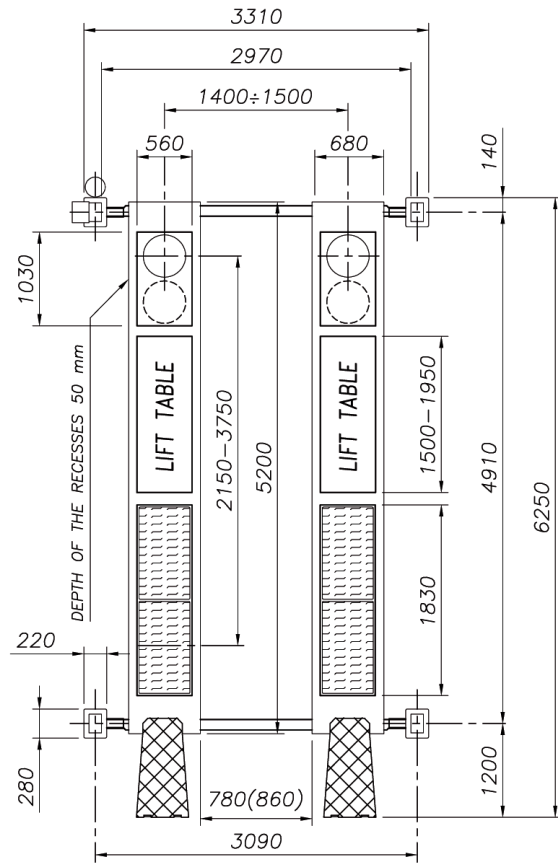


Fig. size



VLH 4850 LA



VLH 4860 A

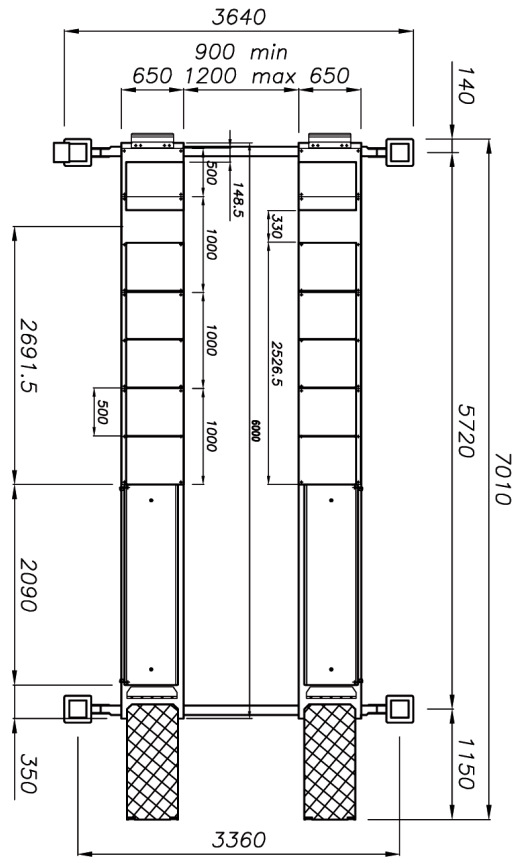


Fig. size

Special accessories

Description	VLH 4740LA	VLH 4840LA	VLH 4850LA	VLH 4860A
Hydraulic fluid (5 Litres)	1 692 872 372	1 692 872 372	1 692 872 372	1 692 872 372
Jacking beam 2000 kg	1 692 875 006	1 692 875 006	-	-
Jacking beam 3000 kg	1 692 875 008	1 692 875 008	-	1 692 875 010
Elastomer block 20 mm (1 piece)	1 692 875 033	1 692 875 033	1 692 875 033	-
Elastomer block 40 mm (1 piece)	1 692 875 034	1 692 875 034	1 692 875 034	-
Elastomer block 60 mm (1 piece)	1 692 875 037	1 692 875 037	1 692 875 037	-
Elastomer block 80 mm (1 piece)	1 692 875 035	1 692 875 035	1 692 875 035	-
Elastomer block 100 mm (1 piece)	1 692 875 036	1 692 875 036	1 692 875 036	-
Easy 3D Adapter	1 690 701 231	1 690 701 231	1 690 701 231	1 690 701 231
Fastening materials	1 692 872 370	1 692 872 370	1 692 872 370	1 692 872 370

Technical data

VLH 47XX/48XX

Basic version	VLH 4740LA	VLH 4840LA	VLH 4850LA	VLH 4860A
Order number	1 692 841 882	1 692 841 885	1 692 841 903	1 692 841 873

Technical data				
Loadbearing capacity	4 t	4 t	5 t	6 t
Min. height	190 mm	190 mm	190 mm	245 mm
Max. lifting height	1830 mm	1830 mm	1830 mm	2050 mm
Platform length	4800 mm	5300 mm	5200 mm	6000 mm
Platform width	540 mm	540 mm	680 mm	650 mm
Drive-through width	2820 mm	2820 mm	2970 mm	3180 mm
Lifting time	30 sec	30 sec	45 sec	55 sec
Dimensions	5344 x 3160 x 2330 mm	6044 x 3160 x 2330 mm	6250 x 3310 x 2330 mm	7010 x 3640 x 2520 mm
Power supply	400V / 3 ph / 50 Hz / E+N / 16 A			
Air supply	8/10 bar			
Motor	3,0 kW	3,0 kW	3,0 kW	3,0 kW
Max. fluid pressure	250 bar	250 bar	190 bar	180 Bar
Minimum concrete thickness	160 mm (Güte C20/25)	160 mm Grade (C20/25)	160 mm Grade (C20/25)	160 mm Grade (C20/25)
Secondary lift; Loadbearing capacity	3,5 t	3,5 t	4 t	–
Max. height	450 mm	450 mm	470 mm	–
Platform length	1400/1800 mm	1400/1800 mm	1500/1950 mm	–
Lifting time	7 sec	7 sec	7 sec	–

Wheel alignment equipment ("A" versions)				
Recessed at front for turntables	Yes	Yes	Yes	Yes
Sliding plates at rear	Yes	Yes	Yes	Yes
Net weight	1400 kg	1500 kg	1720 kg	2000 kg
CE certification	Yes	Yes	Yes	Yes

Technical and programm changes reserved. Ask your your Beissbarth sales partner for a binding offer.
Order number 1693 608 016 Printnorm BB XXX / 19.05.2019 EN

www.beissbarth.com

Beissbarth GmbH
Hanauer Strasse 101
80993 Munich | Germany

Phone: +49-(0)89-14901-0
Fax: +49-(0)89-14901-246
E-mail: sales@beissbarth.com

