

Dialogannahme

QB.4 - ACCESSORIES

Version 2026.05.12 – Prices on request

Cable Set | QB.4 | 400V | 30m

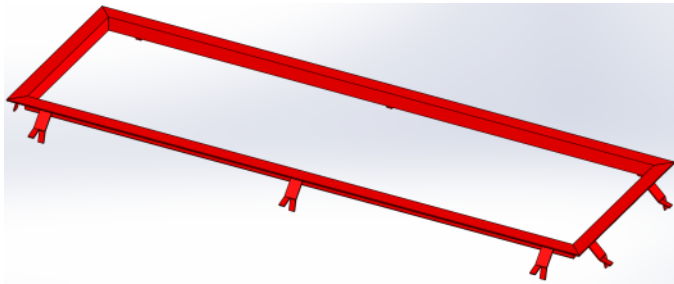
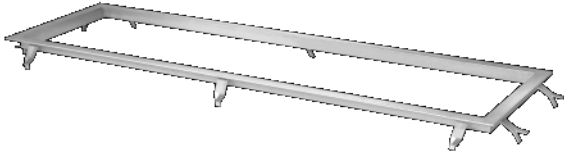
30 m cable set for connecting the roller kit to the control cabinet

Article number: 1691401108

Edge protection for car brake tester | 700 mm

Edge protection for single brake tester with 700 mm roller length

Article number: 1691602000



Pedal force meter | QB.4

Measures pedal force up to 1000N wirelessly via 433Mhz

Article number: 1691403101



Measure pedal force and transmits data wirelessly at 433Mhz. The pedal force meter allows the application of the same pedal force across multiple measurements. This is particularly useful for all-wheel-drive vehicles when left and right wheels are tested individually.

- Measuring range: up to 1,000N
- Resolution: 1N
- Frequency: 433Mhz (8 channels)
- Battery: Rechargeable with 600mAh capacity (12h runtime)
- Dimensions (L x W x H): 106 x 60 x 50mm
- Protection class: IP56
- Temperature range: 0 to 50°C

TV display kit | QB.4

Required for displaying the Android app on a TV. Includes power supply unit, remote control and accessories.

Article number: 1691403100



Used for displaying the braking force on a TV. The QB.4 Android app runs on an Android stick that is plugged directly into the TV. The app is operated via a small remote control. This means that any television can be used to display and control the app, without any licenses, activations or intermediate PCs. Includes power supply unit, remote control and accessories.

Digital Display with wall bracket | QB.4

Includes wall bracket, mounting material, power supply unit and 15m connection cable. No additional accessories required.

Article number: 1691401101



For those who prefer digital values. Braking forces left and right are shown in Newtons. In the middle, the difference between left and right in percent. Includes wall bracket, mounting material, power supply unit and 15m connection cable. No additional accessories required. L x W x H: 900 x 350 x 200 mm Weight: 13 kg

Analog Display with wall bracket | QB.4

Includes wall bracket, mounting material, power supply unit and 15m connection cable. No additional accessories required.

Article number: 1691401100

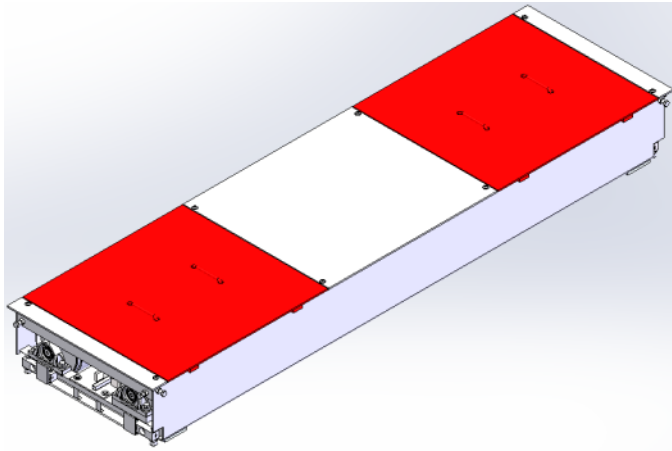


The classic way to display braking forces. Consisting of two pointers, each with a scale up to 8kN for left and right brake force as well as a difference display in percent. Includes wall bracket, mounting material, power supply unit and 15m connection cable. No additional accessories required. 3 LEDs: On/Off, Automatic ready Yes/No, Notification. L x W x H: 890 x 510 x 150 mm. Weight: 13 kg

Drive-over plate pluggable | 700 mm

Pluggable drive-over plate for roller set with 700 mm (2 pices)

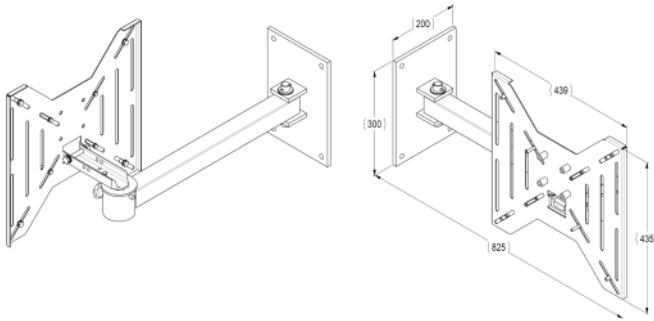
Article number: 1691601010



Wall bracket | VESA 400x400mm

Holds TVs with VESA-mount 400x400mm. Swivable.

Article number: 1691401107



Lifting and lowering device | HUS 104 | for BD 4xxx and QB.4 brake tester | 700mm

For fully automatic lifting and lowering of the axle in and out of BD 4xxx and QB.4 brake tester with 700mm rollers

Article number: 1691600015



The solution that allows the fully automated lowering and lifting of the axle in and out of the brake tester:

- Ideal for premium vehicles or cars with low ground clearance
- Easier entry and exit of the roller brake tester
- The automatic lowering and lifting respects all necessary safety requirements

Recommended for intensive use in PTI inspection centers:

- Enables a more fluid, faster and simplified procedure
- Increases the safety of the brake tester
- Increases the longevity of mechanical components (reduces undesired shocks and accelerations of the bench)
- Minimizes the risk of spoiler damage in sports cars
- Fully automated

Height spacer for BD 4xxx / QB.4 in combination with SA 640 / SN 680 / QS.4

Height spacer to place under the brake tester when installed in combination with a EUSAMA suspension tester and the installation frame (P/N 1691602002)

Article number: 1691601109

Height spacer to place under the brake tester when installed in combination with a EUSAMA suspension tester and the installation frame (P/N 1691602002)

Tablet | Android | 10.1"

Incl. protection case

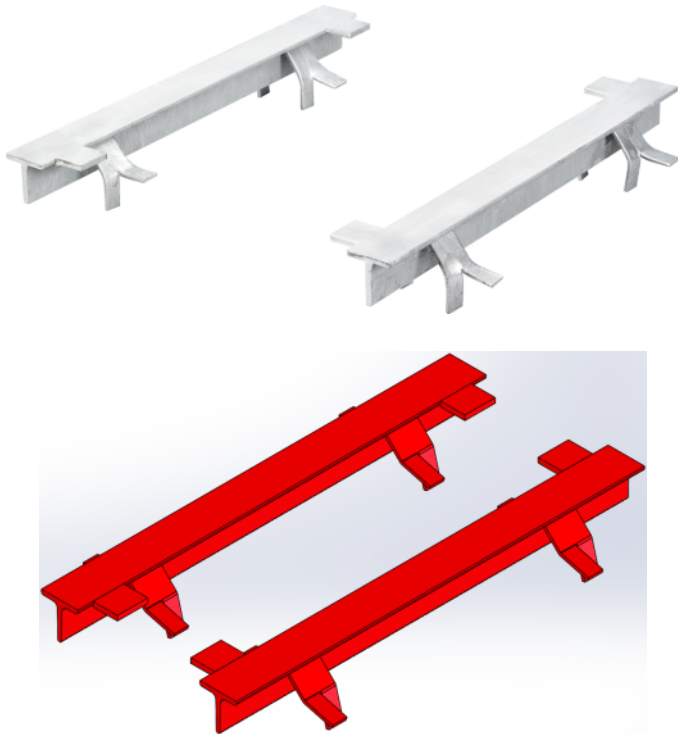
Article number: 1693770644



Support strips for axle load scales | 2 pcs

This solid support is used to adjust the screws of the axle load weighting sensors. Only required when brake tester is installed without inground frame.

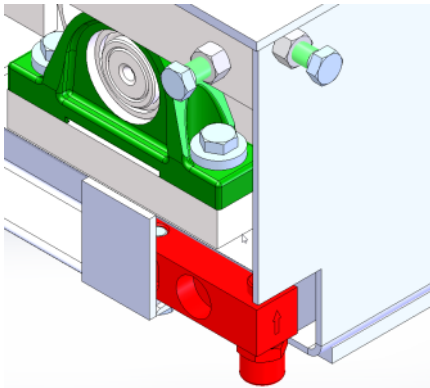
Article number: 1691601009



Axle load scale 4 sensors

4 sensors used to determine vehicle axle load. Additionally requires support strips 1691601009 when brake tester is installed without inground frame.

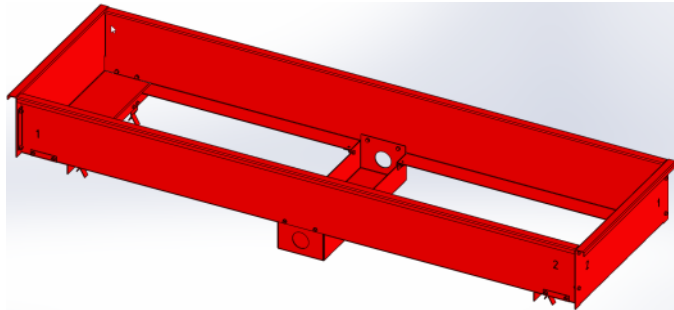
Article number: 1691601606



Installation frame for car brake tester | 700 mm

Installation frame for single brake tester with 700 mm roller length

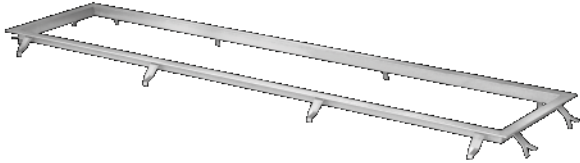
Article number: 1691602115



Edge protection for car brake tester | 1000 mm

Edge protection for single brake tester with 1000 mm roller length

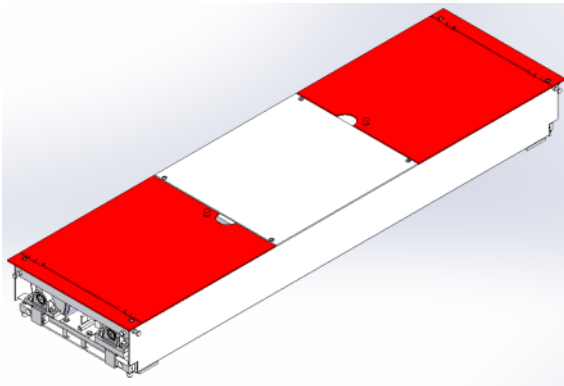
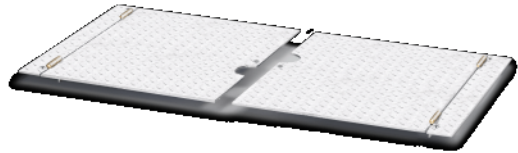
Article number: 1691602151



Drive-over plate swiveling | 700 mm

Swiveling drive-over plate for roller set with 700 mm (2 pieces)

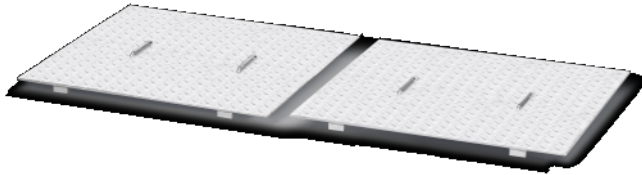
Article number: 1691601011



Drive-over plate pluggable | 1000 mm

Pluggable drive-over plate for roller set with 1000 mm (2 pieces)

Article number: 1691602112



Lifting and lowering device | HUS 104 | for BD 4xxx and QB.4 brake tester | 1000mm

For fully automatic lifting and lowering of the axle in and out of BD 4xxx and QB.4 brake tester with 1000mm rollers

Article number: 1691600025



The solution that allows the fully automated lowering and lifting of the axle in and out of the brake tester:

- Ideal for premium vehicles or cars with low ground clearance
- Easier entry and exit of the roller brake tester
- The automatic lowering and lifting respects all necessary safety requirements

Recommended for intensive use in PTI inspection centers:

- Enables a more fluid, faster and simplified procedure
- Increases the safety of the brake tester
- Increases the longevity of mechanical components (reduces undesired shocks and accelerations of the bench)
- Minimizes the risk of spoiler damage in sports cars
- Fully automated

QB.4 - Accessories

Cable Set | QB.4 | 400V | 30m

Article number: 1691401108



Edge protection for car brake tester | 700 mm

Article number: 1691602000



Pedal force meter | QB.4

Article number: 1691403101



TV display kit | QB.4

Article number: 1691403100



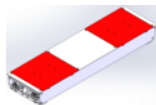
Digital Display with wall bracket | QB.4

Article number: 1691401101



Analog Display with wall bracket | QB.4

Article number: 1691401100



Drive-over plate pluggable | 700 mm

Article number: 1691601010



Wall bracket | VESA 400x400mm

Article number: 1691401107



Lifting and lowering device | HUS 104 | for BD 4xxx and QB.4 brake tester | 700mm

Article number: 1691600015

Height spacer for BD 4xxx / QB.4 in combination with SA 640 / SN 680 / QS.4

Article number: 1691601109



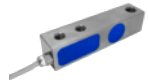
Tablet | Android | 10.1"

Article number: 1693770644



Support strips for axle load scales | 2 pcs

Article number: 1691601009



Axle load scale 4 sensors

Article number: 1691601606



Installation frame for car brake tester | 700 mm

Article number: 1691602115



Edge protection for car brake tester | 1000 mm

Article number: 1691602151



Drive-over plate swiveling | 700 mm

Article number: 1691601011



Drive-over plate pluggable | 1000 mm

Article number: 1691602112



Lifting and lowering device | HUS 104 | for BD 4xxx and QB.4 brake tester | 1000mm

Article number: 1691600025

IMPORTANT NOTES

- Please notice: This list contains spare parts, too.
- Without instruction or assembly.
- Delivery ex works including packaging.

VERSION 2026.05.12 – PRICES ON REQUEST

- Starting from now all previous lists will lose their validity.
- Please read our general terms and conditions in the latest version before ordering; to be found under www.beissbarth.com.

Order number 1 693 602 008 **Print norm** BB XXX / XX.XX.2020 DE · Subject to technical and program changes, errors excepted.

Beissbarth Automotive Testing Solutions GmbH

Friedrichshafener Str. 602
82205 Gilching, Germany
sales@beissbarth.com
www.beissbarth.com

Telefon: +49-(0)89-14901-0
Telefax: +49-(0)89-14901-246

