

Dialogannahme

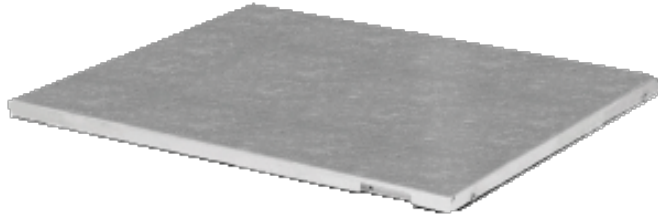
SIDE SLIP TESTER

Version 2026.05.12 – Prices on request

Side Slip Tester MSS 8400

To quickly measure toe-in or toe-out on two-tracks trucks with maximum test load of 8000kg. Compatible with both old (MB 8xxx) and new (BD 5xxx to BD 8xxx) generation brake tester

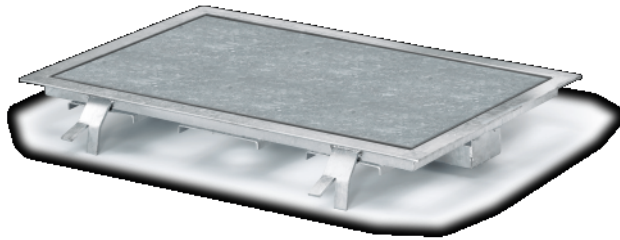
Article number: 1691841007



Side Slip Tester ST 600 V3.0 | waterproof

Special accessory for series BD 4 and QB.4 brake tester | only to be used for checking toe-in or toe-out on double-track vehicles

Article number: 1691631013



As part of the test lane, the ST 600 measures toe values on the front and rear axles at drive-over speeds of up to 15 km/h.

Compatible with the following Beissbarth passenger car brake testers:

- BD 6xx: In conjunction with the 8kN analog display with LCD screen or ScreenLane PC software
- BD 4xxx: In conjunction with the 8kN analog display with LCD screen or ICPerform PC software
- QB.4: Only in conjunction with the App

Side Slip Tester



Side Slip Tester MSS 8400

Article number: 1691841007



Side Slip Tester ST 600 V3.0 | waterproof

Article number: 1691631013

IMPORTANT NOTES

- Please notice: This list contains spare parts, too.
- Without instruction or assembly.
- Delivery ex works including packaging.

VERSION 2026.05.12 – PRICES ON REQUEST

- Starting from now all previous lists will lose their validity.
- Please read our general terms and conditions in the latest version before ordering; to be found under www.beissbarth.com.

Order number 1 693 602 008 **Print norm** BB XXX / XX.XX.2020 DE · Subject to technical and program changes, errors excepted.

Beissbarth Automotive Testing Solutions GmbH

Friedrichshafener Str. 602
82205 Gilching, Germany
sales@beissbarth.com
www.beissbarth.com

Telefon: +49-(0)89-14901-0
Telefax: +49-(0)89-14901-246

