

Dialogannahme

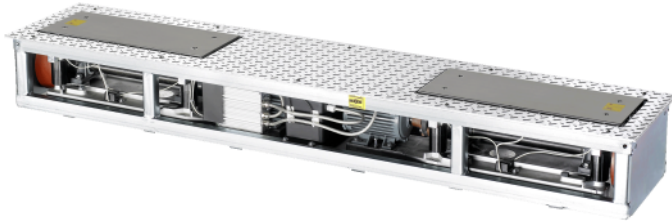
TEST LANES

Version 2026.05.12 – Prices on request

Suspension tester SA 640 | 400 V | EUSAMA

Special accessory for series BD 4xxx brake tester | only to be used for checking the technical condition of suspension elements

Article number: 1691620307

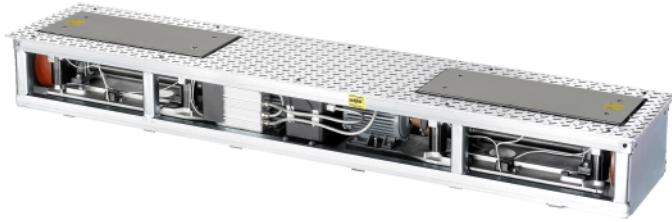


- Under unfavorable conditions, the road surface adhesion of a wheel is governed by the technical condition of the suspension elements (suspension system, wheel bearings, tires and shock absorbers).
- The SA 640 measures the relative road surface adhesion of a wheel on the basis of the internationally recognized EUSAMA principle.
- The results of the full chassis test provide an overall assessment of the road safety of the vehicle.
- Measurement system: Bending bar with strain gauge

Suspension tester SA 640 | 230 V | EUSAMA

Special accessory for series BD 4xxx brake tester | only to be used for checking the technical condition of suspension elements

Article number: 1691620311

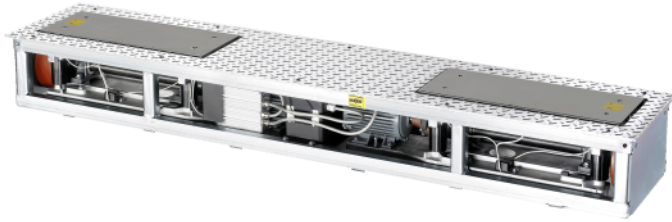


- Under unfavorable conditions, the road surface adhesion of a wheel is governed by the technical condition of the suspension elements (suspension system, wheel bearings, tires and shock absorbers).
- The SA 640 measures the relative road surface adhesion of a wheel on the basis of the internationally recognized EUSAMA principle.
- The results of the full chassis test provide an overall assessment of the road safety of the vehicle.
- Measurement system: Bending bar with strain gauge

Suspension tester QS.4 | 400 V | EUSAMA

Only for brake tester QB.4

Article number: 1691620200



Fully automatic suspension tester detects technical defects in shock absorbers, wheel suspension, wheel bearings and tires.

- Fully automatic determination of road grip, axle weight and total weight
- Measurement begins when the vehicle is put on the tester
- Direct integration of results into the QB.4 brake tester
- Fully hot-dip galvanized

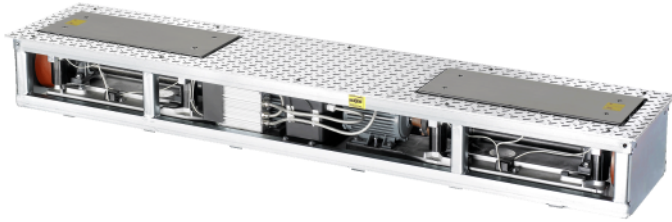
Supply volume:

- QS.4 suspension tester
- Connecting cable

Suspension tester QS.4 | 230 V | EUSAMA

Only for brake tester QB.4 230V

Article number: 1691620201



Fully automatic suspension tester detects technical defects in shock absorbers, wheel suspension, wheel bearings and tires.

- Fully automatic determination of road grip, axle weight and total weight
- Measurement begins when the vehicle is put on the tester
- Direct integration of results into the QB.4 brake tester
- Fully hot-dip galvanized

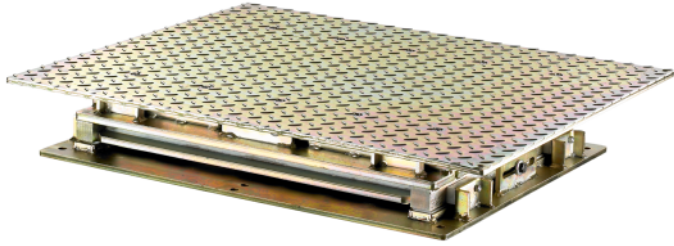
Supply volume:

- QS.4 suspension tester
- Connecting cable

Joint play detector GST 8508 | 400V

Quick detection of defects and wear on suspension systems on two-tracks trucks with up to 16t axle load. Stand alone product

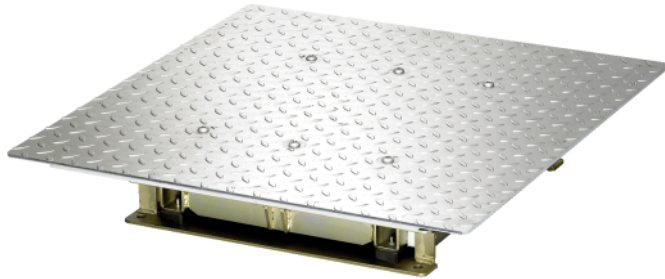
Article number: 1691850100



Joint play detector GST 651 | 400 V

To detect defects and wear in the suspension systems of double-track vehicles | up to 4 t axle load

Article number: 1691650000

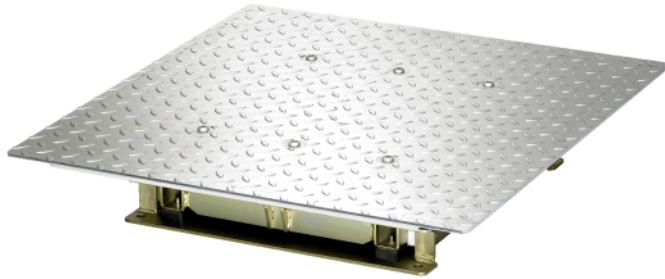


- The geometry of the axle to be tested is displaced by moving the test plates of the GST 6xx. This makes it possible to detect impermissible play at joints and wheel bearings or to localise cracks at stub axles for example.
- The GST 651 is only to be used for the inspection of double-track vehicles with a maximum axle load of 4000 kg.
- Remote control over control lamp with control buttons (Ø 60 mm, length 205 mm, incl. Halogen bulb with reflector, GU5,3 / 38°, 12 V / 20 W)

Joint play detector GST 651 | 230 V

To detect defects and wear in the suspension systems of double-track vehicles | up to 4 t axle load

Article number: 1691650001

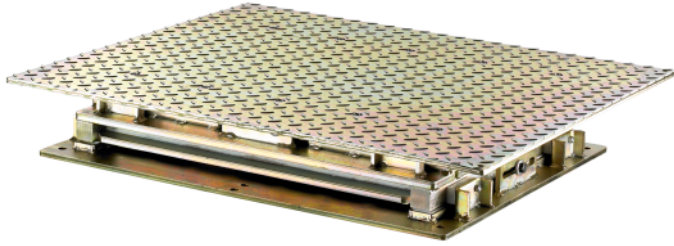


- The geometry of the axle to be tested is displaced by moving the test plates of the GST 6xx. This makes it possible to detect impermissible play at joints and wheel bearings or to localise cracks at stub axles for example.
- The GST 651 is only to be used for the inspection of double-track vehicles with a maximum axle load of 4000 kg.
- Remote control over control lamp with control buttons (Ø 60 mm, length 205 mm, incl. Halogen bulb with reflector, GU5,3 / 38°, 12 V / 20 W)

Joint play detector GST 8508 | 230V

Quick detection of defects and wear on suspension systems on two-tracks trucks with up to 16t axle load. Stand alone product

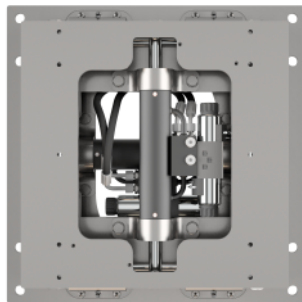
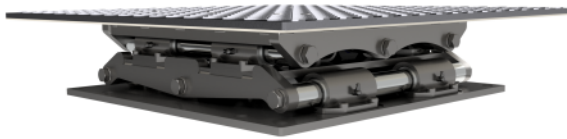
Article number: 1691850101



Joint Play Detector GST 8600 | Truck | 20t | 400V

Quick detection of defects and wear on wheel bearings, steering parts, suspension, stabilizers, and trailer couplings on trucks with up to 20t axle loads

Article number: 1691850200



Joint Play Detector Truck 20t - Quick detection of defects and wear on trucks with up to 20t axle load:

- wheel bearings,
- steering parts,
- suspension,
- stabilizers,
- Kingpins and
- trailer couplings

Advantages:

- Smooth movement due to powerful hydraulic unit with high precision for easy and fast positioning
- Low-noise under-oil hydraulic power unit
- Two digital test plates built into the foundation at ground level
- Galvanized test plates with integrated, digital valve control electronics
- Bearing is provided by extra-robust, hard-chrome plated steel shafts
- Extremely robust and low-maintenance design for long service life
- Test plates can be moved in horizontal, vertical, and transversal directions
- Further operating modes including automatic modes (optionally)
- Wireless radio hand lamp with one-hand operation for movements control
- Wireless radio hand lamp with long-life LEDs and lens for an ideal light beam angle
- Suitable for existing Beissbarth foundation frames (as used for GST-8508)
- Suitable for all popular foundation frames (accessories required)
- Meets the requirements of Directive 2014/45/EU

Standard swinging movements:

- Longitudinal and transverse, opposite directions

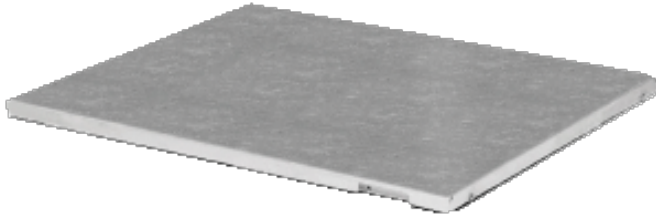
Optional swinging movements upgrades:

- Longitudinal and transverse, same direction (1691853206)
- Automatic longitudinal and transverse, same and opposite directions (1691853203)
- Automatic circular (1691853204)
- Automatic diagonal (1691853205)
- Single wheel, left / right (1691853208)
- Automatic center (1691853207)
- All movements (1691851204)

Side Slip Tester MSS 8400

To quickly measure toe-in or toe-out on two-tracks trucks with maximum test load of 8000kg. Compatible with both old (MB 8xxx) and new (BD 5xxx to BD 8xxx) generation brake tester

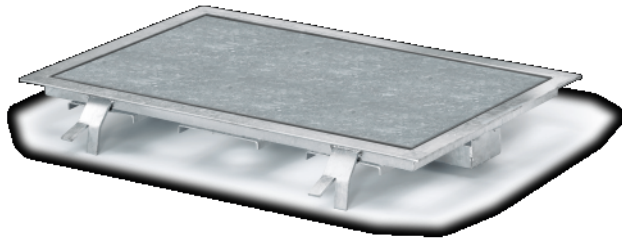
Article number: 1691841007



Side Slip Tester ST 600 V3.0 | waterproof

Special accessory for series BD 4 and QB.4 brake tester | only to be used for checking toe-in or toe-out on double-track vehicles

Article number: 1691631013



As part of the test lane, the ST 600 measures toe values on the front and rear axles at drive-over speeds of up to 15 km/h.

Compatible with the following Beissbarth passenger car brake testers:

- BD 6xx: In conjunction with the 8kN analog display with LCD screen or ScreenLane PC software
- BD 4xxx: In conjunction with the 8kN analog display with LCD screen or ICPerform PC software
- QB.4: Only in conjunction with the App

Suspension Tester



Suspension tester SA 640 | 400 V | EUSAMA

Article number: 1691620307



Suspension tester SA 640 | 230 V | EUSAMA

Article number: 1691620311



Suspension tester QS.4 | 400 V | EUSAMA

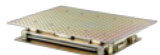
Article number: 1691620200



Suspension tester QS.4 | 230 V | EUSAMA

Article number: 1691620201

Play Detector



Joint play detector GST 8508 | 400V

Article number: 1691850100



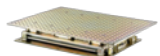
Joint play detector GST 651 | 400 V

Article number: 1691650000



Joint play detector GST 651 | 230 V

Article number: 1691650001



Joint play detector GST 8508 | 230V

Article number: 1691850101



Joint Play Detector GST 8600 | Truck | 20t | 400V

Article number: 1691850200

Side Slip Tester



Side Slip Tester MSS 8400

Article number: 1691841007



Side Slip Tester ST 600 V3.0 | waterproof

Article number: 1691631013

IMPORTANT NOTES

- Please notice: This list contains spare parts, too.
- Without instruction or assembly.
- Delivery ex works including packaging.

VERSION 2026.05.12 – PRICES ON REQUEST

- Starting from now all previous lists will lose their validity.
- Please read our general terms and conditions in the latest version before ordering; to be found under www.beissbarth.com.

Order number 1 693 602 008 **Print norm** BB XXX / XX.XX.2020 DE · Subject to technical and program changes, errors excepted.

Beissbarth Automotive Testing Solutions GmbH

Friedrichshafener Str. 602
82205 Gilching, Germany
sales@beissbarth.com
www.beissbarth.com

Telefon: +49-(0)89-14901-0
Telefax: +49-(0)89-14901-246

