

Dialogannahme

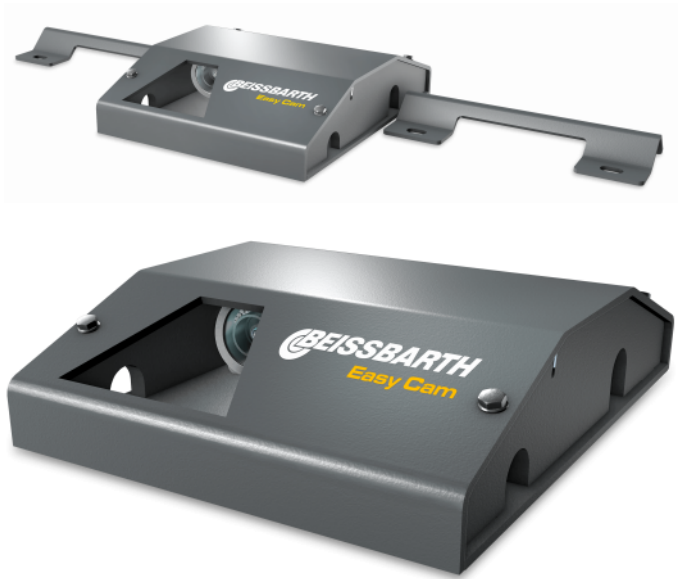
EASY TREAD - ACCESSORIES

Version 2026.04.25 – Prices on request

License plate recognition Easy Cam | Above ground

Easy Cam license plate recognition with housing for above ground installation

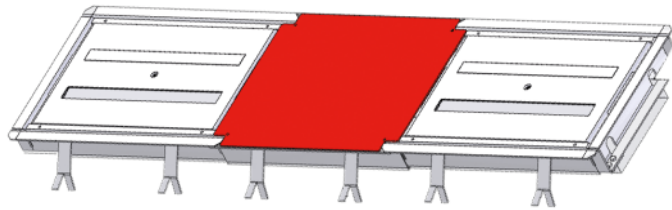
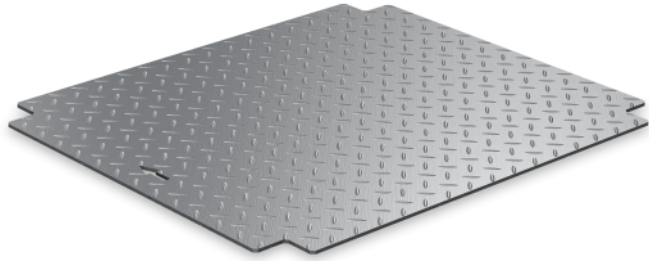
Article number: 1691200008



Centre cover Easy Tread | Inground +200mm

Cover panel for inground version without EasyCam

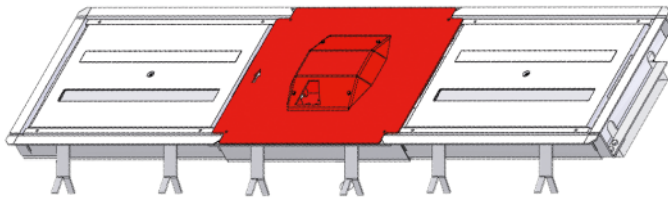
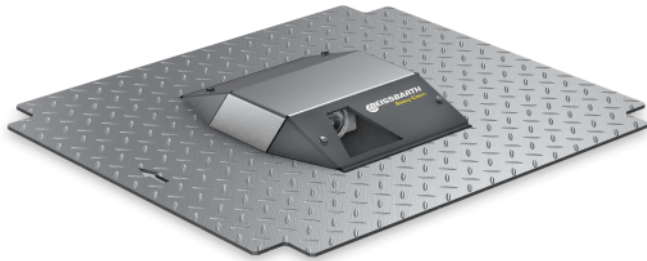
Article number: 1691202095



License plate recognition Easy Cam | Inground +200mm

EasyCam inground camera kit incl. centre cover

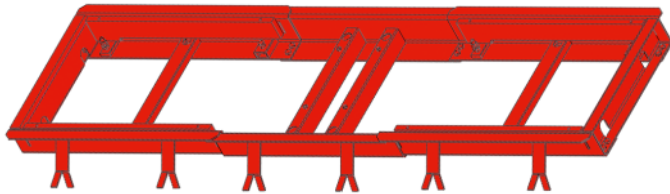
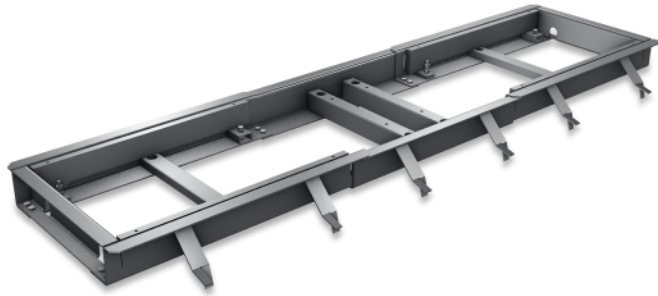
Article number: 1691200027



Inground frame for Easy Tread and VAS 741083 RDS

Inground frame to be cemented in with filling pieces and socket for the EasyCam. 200mm wider than standard inground frame

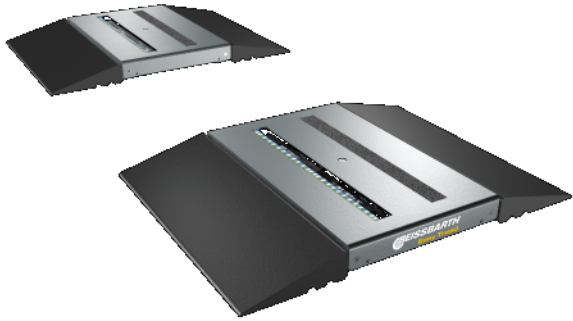
Article number: 1691200028



Drive-over ramps kit | for onground installations

4x drive-over ramps for onground installations

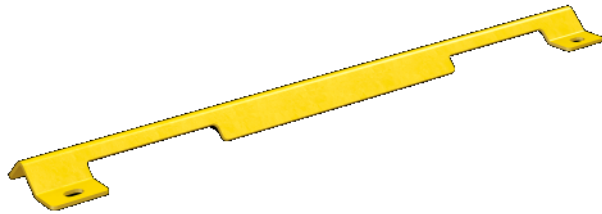
Article number: 1691200042



Cable protection | for onground installations without Easy Cam

Cable protection for onground installations without Easy Cam.

Article number: 1691202039

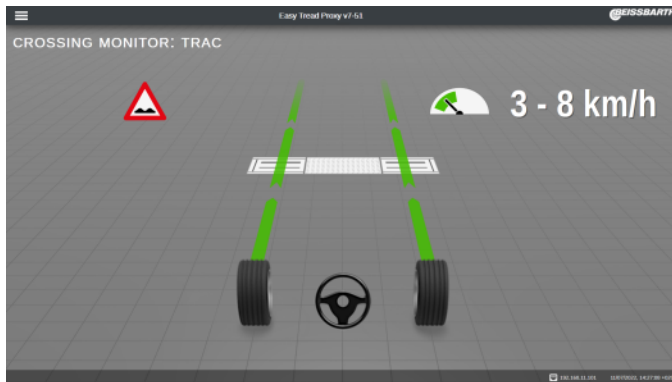


Easy Tread - Connectivity Kit

Connectivity Upgrade Kit for easy integration into workshop networks, ASA connection, and cumulative display of values from multiple Easy Tread installations.

Article number: 1691200022

DATE	LANE	VEHICLE	DIRT	FRONT AXLE		REAR AXLE		STATUS
13:26:58	LANE-1	R FL 1637		> 8	3.3	4.2	> 8	
10:28:08	LANE-3	U QD 8948		> 8	5.2	4.9	5.2	
15:02:28	LANE-1	R DH 2803		5.0	> 8	7.1	> 8	
15:02:22	LANE-1	I BU 5201		2.8	2.6	5.9	> 8	
14:55:33	LANE-1	F JA 5264		4.7	4.0	5.9	> 8	
10:04:48	LANE-3	U AM 690		6.4	3.9	4.9	6.1	
10:02:36	LANE-1	G QP 1289		4.9	4.1	4.0	4.3	
10:01:26	LANE-2	P MA 5240		> 8	3.3	4.2	> 8	
09:35:27	LANE-2	B VS 5153		6.4	3.9	4.9	6.1	
09:34:57	LANE-1	J HE 4803		4.9	4.1	4.0	4.3	



A digital workshop requires digital processes, and tire diagnosis is no exception.

Particularly with electric vehicles, high weight and torque cause enormous wear on tires and chassis components. With the automatic tire diagnosis of every vehicle entering the workshop, you not only keep the tire business in your workshop, but also create a basis for strong customer loyalty by ensuring more safety. The immediate evaluation of the tire wear image simultaneously generates service opportunities for wheel alignment and, if necessary, subsequent calibration of driver assistance systems.

The Connectivity Upgrade Kit allows you to seamlessly integrate any number of Easy Tread systems into your workshop network, giving you full control over vehicles

Connectivity Upgrade Kit:

- Live view of all crossings of multiple Easy Treads in the same workshop
- 20% faster reading
- Connectivity via ASA interface
- Simplified connection to local workshop network
- New interface for easy integration into third party systems
- Direct connection of monitors and TVs without using the browser
- Search function for license plates
- Cumulative statistics across multiple Easy Tread installations

Live Monitor:

The Live Monitor displays results such as license plate, tread depth, uneven tire wear, potential air pressure problems, as well as statistics from multiple Easy Tread installations. This can be accessed from any device with a web browser. As a result:

- Increase tire sales
- Increase wheel alignment and, if applicable, subsequent ADAS calibrations
- Optimize workshop processes
- Improve customer satisfaction & transparency
- Reduce walking distances and printing costs

More data, more knowledge:

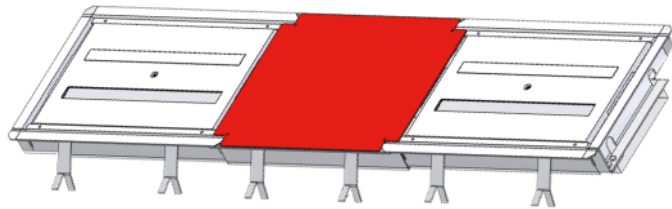
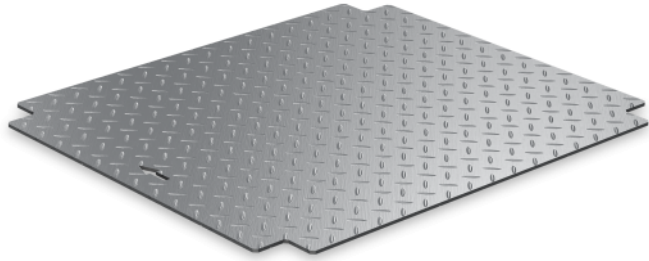
Workshop and tire chains take note! Cumulate Easy Tread measurement values even across multiple workshops! Collect crossing information from decentrally spread locations in one central place and increase efficiency in your workshops:

- Capacities & Performance Tracking
- Availability & management of tires
- Sending measurement reports to customers
- Online consulting of customers about further service measures

Centre cover Easy Tread and VAS 741083 RDS

Cover panel for inground version without EasyCam

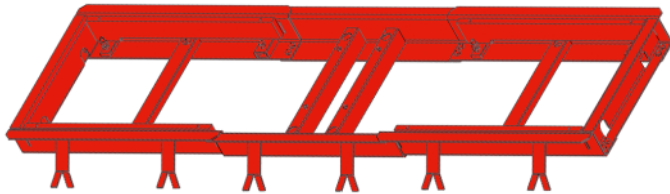
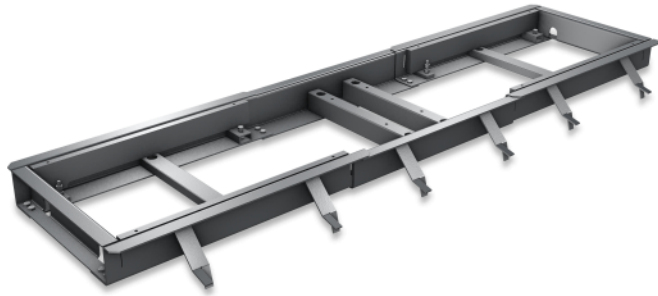
Article number: 1691202069



Foundation frame for Easy Tread and VAS 741083 RDS

Foundation frame to be cemented in with filling pieces and socket for the EasyCam

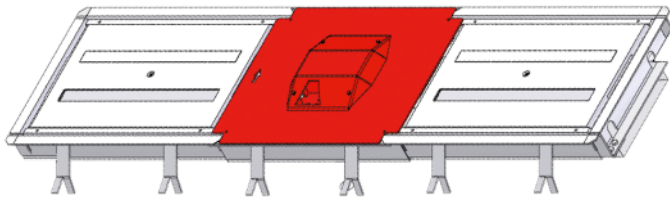
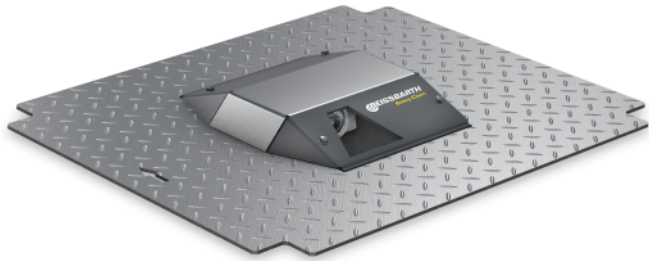
Article number: 1691200010



License plate recognition Easy Cam | Inground

EasyCam inground camera kit incl. centre cover

Article number: 1691200009



PC trolley for Easy Tread

Trolley with PC, monitor, mouse, and keyboard (no printer included)

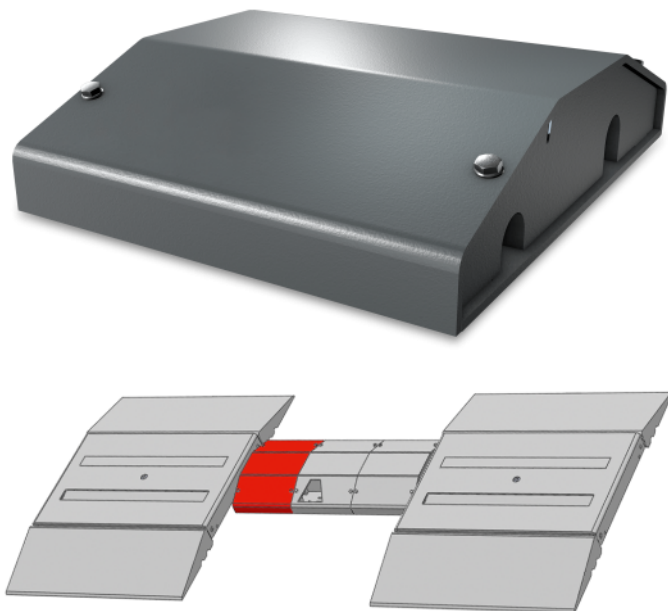
Article number: 1691200023



Cable tunnel | for onground installations of Easy Tread

Cable tunnel for drive-over protection

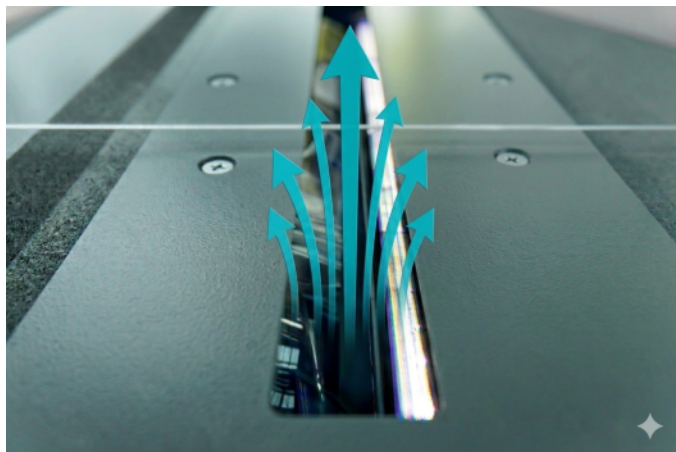
Article number: 1691201023



- Cable tunnel to be used as cable bridge for the gaps between the ANPR camera housing and the Easy Tread modules (left and right) as well as roll-over protection for lateral cable outlets

Automatic Cleaning Solution | Easy Tread

Article number: 1691200051



Two-Stage Dirt Protection for Clear ResultsThe cleaning kit utilizes an intelligent two-stage strategy to keep the measurement modules clean:

- **Preventative Airflow:** As soon as the ANPR camera detects a vehicle license plate, a continuous airflow is activated. This prevents dirt, water, or small stones from reaching the optics before the vehicle even passes over.
- **Periodic Cleaning:** At freely configurable intervals (e.g., every two minutes), a powerful blast of air removes even the finest dust particles or leaves that might settle between measurements.

Gentle on Technology, Strong on Results

Cleaning with air offers a decisive advantage over mechanical methods: it is extremely gentle on materials. Scratching of the measurement optics is effectively prevented, significantly extending the hardware's lifespan. Workshops benefit from permanently high process reliability and uninterrupted system availability.

Simple Retrofitting for Existing Customers

Particularly customer-friendly: The upgrade is not only available for new devices but can also be easily integrated into existing Easy Tread installations. Technical Requirements:

- Compressed air connection (6-8 bar)
- Connectivity Kit for digital control (included as standard in all Easy Treads since 07/2022)

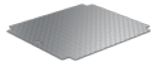
Note: Without an ANPR camera, only periodic cleaning is possible.

Easy Tread - Accessories



License plate recognition Easy Cam | Above ground

Article number: 1691200008



Centre cover Easy Tread | Inground +200mm

Article number: 1691202095



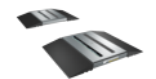
License plate recognition Easy Cam | Inground +200mm

Article number: 1691200027



Inground frame for Easy Tread and VAS 741083 RDS

Article number: 1691200028



Drive-over ramps kit | for onground installations

Article number: 1691200042



Cable protection | for onground installations without Easy Cam

Article number: 1691202039



Easy Tread - Connectivity Kit

Article number: 1691200022



Centre cover Easy Tread and VAS 741083 RDS

Article number: 1691202069



Foundation frame for Easy Tread and VAS 741083 RDS

Article number: 1691200010



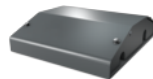
License plate recognition Easy Cam | Inground

Article number: 1691200009



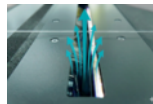
PC trolley for Easy Tread

Article number: 1691200023



Cable tunnel | for onground installations of Easy Tread

Article number: 1691201023



Automatic Cleaning Solution | Easy Tread

Article number: 1691200051

IMPORTANT NOTES

- Please notice: This list contains spare parts, too.
- Without instruction or assembly.
- Delivery ex works including packaging.

VERSION 2026.04.25 – PRICES ON REQUEST

- Starting from now all previous lists will lose their validity.
- Please read our general terms and conditions in the latest version before ordering; to be found under www.beissbarth.com.

Order number 1 693 602 008 **Print norm** BB XXX / XX.XX.2020 DE · Subject to technical and program changes, errors excepted.

Beissbarth Automotive Testing Solutions GmbH

Friedrichshafener Str. 602
82205 Gilching, Germany
sales@beissbarth.com
www.beissbarth.com

Telefon: +49-(0)89-14901-0
Telefax: +49-(0)89-14901-246

