

Dialogannahme

Q.LIGN - ACCESSORIES

Version 2026.05.12 – Prices on request

Lift Adaptation Extension (1x) | for wide vehicles on narrow lifts

Article number: 1690202173



Extension for Q.Lign lift adaptation, for measuring wide vehicles on narrow lifts. 2x required per wheel aligner.

Dust cover target board | Q.Lign

Article number: 1690202155

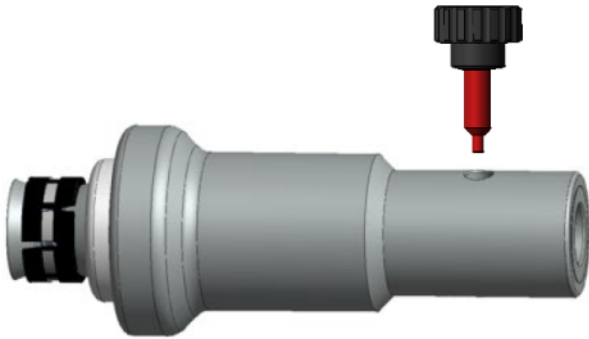


Scope of delivery: 1x protective cover

Self-centering quick clamp | for Lamborghini

Quick clamping device for Lamborghini vehicles with center wheel bolt

Article number: 8900380016



- Attaches to the center bolt of the rim
- Quick and secure mounting on the vehicle
- Reduces clamping errors

Self-centering quick clamp for Porsche

Quick clamping device for Porsche vehicles

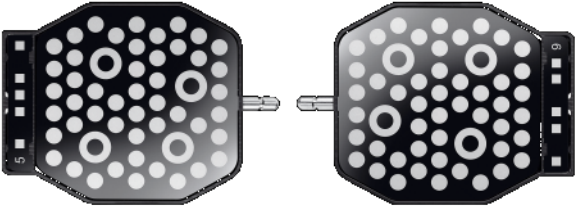
Article number: 1690301003



- Attaches to the center hole of the rim
- Quick and secure mounting on the vehicle
- Reduces clamping errors
- Official VW special tool: VAS 6829
- Not suited for Porsche vehicles with center wheel bolt!

ADAS target boards | for Q.Lign

Article number: 1690200013



For ADAS calibration in combination with Q.Lign. Target boards can be permanently installed on the ADAS calibration tool. Scope of delivery:

- 2x ADAS target boards (Coding ID #5 and #6)
- 2x target covers

Compatible with BBFAS1000 and most third-party ADAS calibration tool solutions.

Q.Grip | 25-37" | 1 pcs.

Article number: 1690101028



Q.Grip: The closest you will get to Touchless.

- Mounting of targets in under 5 seconds
- No rim contact, no scratches or damages!
- Instantaneously change between different tyre diameters with our new patented clamping mechanism
- Three arms guarantee safe and precise grip during the complete alignment
- No removal of hubcaps!
- No knob twisting!
- No fixed wheel assignment, position on any wheel!
- Clamping range: 626-946mm / 24.63"-37.2" (wheel diameter)

Adapter set Q.Grip | for Q.Lign | 4 pcs.

Article number: 1690101010



Q.Grip: The closest you will get to Touchless.

- Mounting of targets in under 5 seconds
- No rim contact, no scratches or damages!
- Instantaneously change between different tyre diameters with our new patented clamping mechanism
- Three arms guarantee safe and precise grip during the complete alignment
- No removal of hubcaps!
- No knob twisting!
- No fixed wheel assignment, position on any wheel!
- Clamping range: 525-835mm / 20.6"-32.8" (wheel diameter)

Trolley with 27"monitor | for Q.Lign

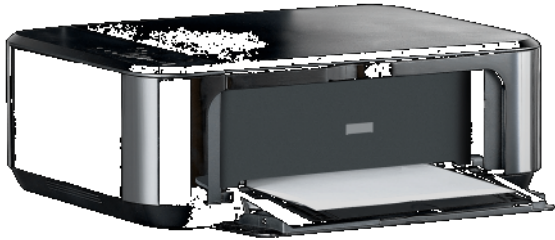
Scope of delivery: - Trolley - Monitor arm - 27" monitor

Article number: 1690201055



Printer for Beissbarth trolleys

Article number: 1693770415



Wall board for Q.Lign

Article number: 1690201054



Tablet | Android | 10.1"

Incl. protection case

Article number: 1693770644



Lift adaptation for Q.Lign

2x required for Q.Lign

Article number: 1690201035



Emergency power box for Q.Lign

Article number: 1690201030



- Power supply of sensor heads in case of battery failure
- Mobile use without fixed installation
- Connection to sensor heads via 10 m (1690203025) or 15 m cable (1690203041)

Note: Operation additionally requires the 19 V power supply (1693770648) which is included in the battery-powered Q.Lign scope of deliveries.

Power supply for Q.Lign Accessories | 19 V RRC

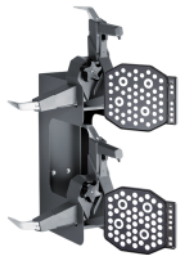
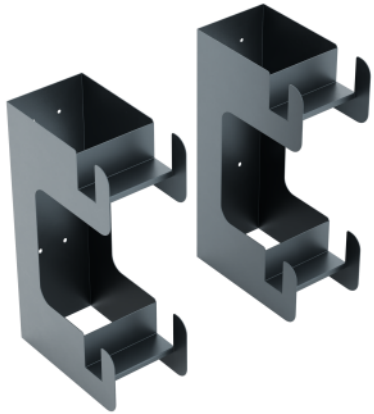
For battery charging station and emergency power supply box of Q.Lign

Article number: 1693770648

Storage kit | for 4x Q.Grip

Can be either mounted to the wall or to the post of the Q.Lign T.41 wheel aligner. The storage kit holds 2x2 Q.Grip clamps. Can be positioned on each side of the vehicle for maximum efficiency.

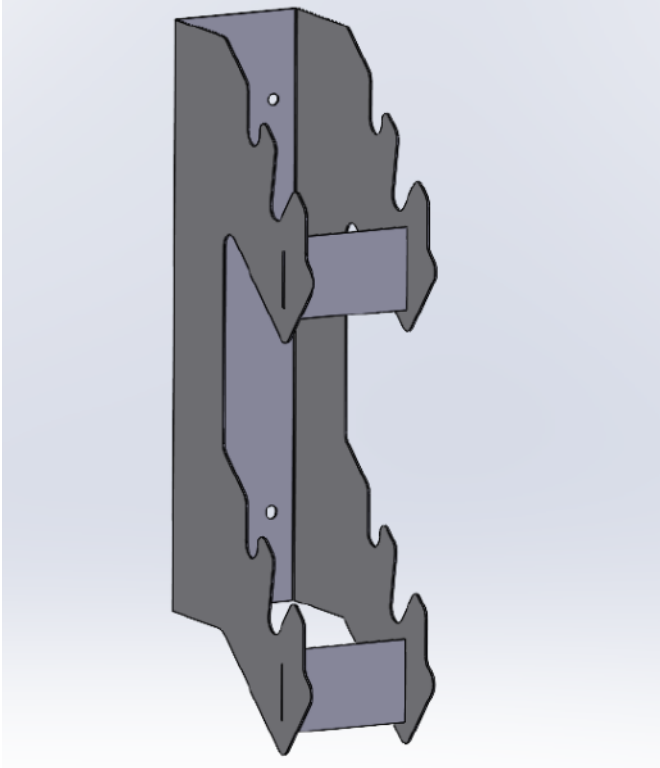
Article number: 1690801048



Storage kit | for 4x MultiFit

Can be either mounted to the wall or to the post of the Q.Lign T.41 wheel aligner. The storage kit holds 2x2 MultiFit clamps. Can be positioned on each side of the vehicle for maximum efficiency.

Article number: 1690801047



Mouse and keyboard | Wireless

Article number: 1693770634



Inclinometer and steering wheel level | Mercedes-Benz

Article number: 1690102231



Mercedes-Benz Inclinometer Combo-Instrument:

- Measurement: Measurement of the inclination of the control arm and drive shaft with electronic data transfer of measured values to the wheel aligner.
- Includes: Includes all mounting adapters for the most common Mercedes-Benz models.
- Function: After the inclination measurement, the inclinometer is inserted into the steering wheel to monitor the steering wheel position throughout the entire alignment process.
- Reporting: Automatic transfer of the steering wheel position into the measurement report.

Included adapters for the following vehicles:

- Cavity adapter: Mercedes E-Class (on the control arm)
- Crown adapter: Mercedes A-Class, C-Class, S-Class, E-Class (Type W210 and W211), CLA-Class (Type 117), Citan (Type 415, rear axle only)
- Angle adapter: Mercedes Vaneo (Type 414, 2001–2005)
- Measuring adapter: Mercedes Citan (Type 415, front axle only)
- Adapter plate: Mercedes CLK (Type 208, 1997–2003), C-Class (Type 202, 1993–2001)

Important: Only compatible with wheel aligner: Q.Lign

Technical Data:

- Measuring range: $\pm 45^\circ$ from the horizontal
- Accuracy: 0.1° in the range from 0° to $\pm 45^\circ$
- Repeatability: $\pm 0.1^\circ$
- Operating temperature range: 0°C to 50°C
- Power supply: 3 x 1.5V AA batteries / Service life approx. 20 hours in normal operation at approx. 50% display brightness
- Bluetooth: 5.2 Low Energy connectivity
- Weight: 550 grams (without adapter)

Accessory Cart | for Magnetic Clamps

Article number: 1690101128



For storing 4x magnetic clamps, brake lock, and steering wheel lock

Vehicle database update Q.Lign | Key Card

Article number: 1690002022



- Access to the newest vehicles specs directly from the OEM
- Authorises the licensing of all IAM vehicle databases for the calendar year in which the Key Card has been activated

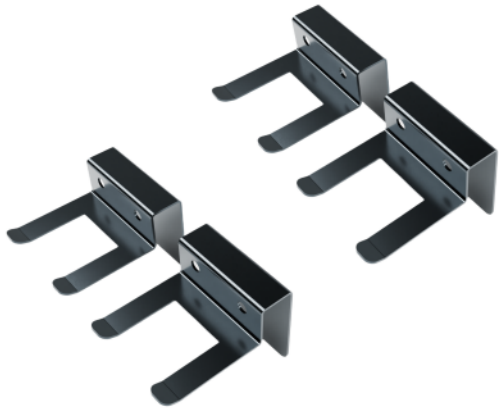
Mounting set for brake and steering wheel lock (2x) | for wall installation

Article number: 1690101089



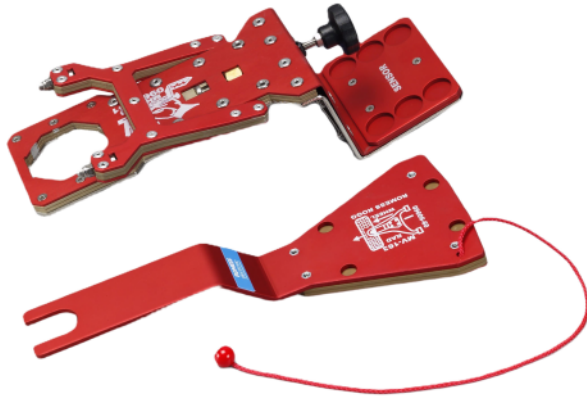
Mounting set for OE quick clamps (4x) | for wall installation

Article number: 1690101090



Romess adapter set for M-Class type W163

Article number: 1690102216



Accessories for Romess Inclinator 1693770002

Scope of Delivery:

- Intermediate adapter for front axle level measurement for W163 (M-Class)
- Intermediate adapter for rear axle caster measurement for W163 (M-Class)

Original part: 09606-65

Dust cover | trolley

Article number: 1690402021

Inground lift adaptation | for Q.Lign | 1x

Article number: 1690201122



2x required for Q.Lign

Set 4x wall bracket | Q.Grip

Set of 4 wall brackets for storing Q.Grips.

Article number: 1690101077



VAS 701011/1 | Set 2x Magnetic clamp for VW Crafter | 130mm & 205mm bolt circles

Set of 2 magnetic clamps for the front axle of the VW Crafter with 130mm and 205mm bolt circles. Magnet length: 55mm

Article number: 1690101084



Set 4x Magnetic clamp for light trucks and RVs | 6x130mm & 6x205mm bolt circles

Set of 4 magnetic clamps for light trucks and RVs. Only for bolt circle diameters 6x130mm and 6x205mm. Magnet length: 55mm

Article number: 1690101083



Wall mount | Q.Lign T-Series | 515-880mm

Extendable wall bracket for mounting the Q.Lign T-series camera beam. Enables distances of up to 4170 mm from the center of the turntable to the wall.

Article number: 1690801053



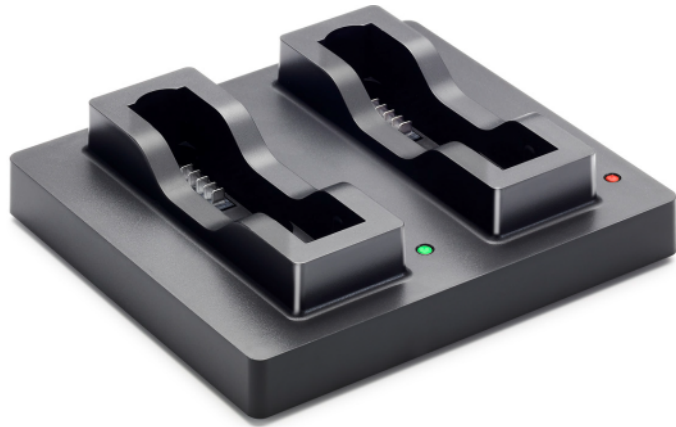
Battery for Q.Lign | Li-Ion | 99 Wh

Article number: 1690203053



Duo-battery charging station for Q.Lign | incl. accessories

Article number: 1690201069



Bracket set for magnetic clamps (4x) | for wall installation

Article number: 1690101092



Self-centering quick clamp for Porsche

Quick clamping device for Porsche vehicles

Article number: 1690380010



- Attaches to the center hole of the rim
- Quick and secure mounting on the vehicle
- Reduces clamping errors
- Official VW special tool: VAS 6918
- Not suited for Porsche vehicles with center wheel bolt!

Self-centering quick clamp for Tesla

Quick clamping device for Tesla vehicles

Article number: 1690380161



- Attaches to the center hole of the rim
- Quick and secure mounting on the vehicle
- Reduces clamping errors

Brake pedal depressor

Article number: 1690401006



Steering wheel holder

Article number: 1690401007



Central clamp Porsche Carrera GT

Central clamping device for Porsche Carrera GT for ultimate precision | with spoiler adapter

Article number: 1690301002



- Quick and secure mounting on the vehicle
- Reduces clamping errors
- Official VW special tool: VAG 6828

Self-centering quick clamp for Ferrari

Quick clamping device for Ferrari vehicles

Article number: 1690381299



- Attaches to the center hole of the rim
- Quick and secure mounting on the vehicle
- Reduces clamping errors
- Used for wheel alignment and radar calibration - Wheel alignment requires 2 sets (4 clamps in total) - Radar calibration requires 1 set (2 clamps in total)

Quick clamp Mercedes-Benz | OEM

Quick clamp for Mercedes-Benz vehicles (5x125mm & 5x160mm)

Article number: 1690801002



- Distance pins sit directly on the wheel hub, a runout compensation is therefore not necessary
- Quick and secure mounting on the vehicles
- For ultimate precision
- Only suited for CCD and Q.Lign systems
- For wheel diameters up to 850mm
- For original Mercedes-Benz rims with pin hole pattern 5x125mm and 5x160mm

Quick clamp BMW | OEM

Quick clamp for BMW vehicles (4x100mm & 5x120mm)

Article number: 1690801001



- Distance pins sit directly on the wheel hub, a runout compensation is therefore not necessary
- Quick and secure mounting on the vehicles
- For ultimate precision
- Homologated for BMW
- Only suited for CCD and Q.Lign systems
- Für Raddurchmesser bis 850mm
- For original BMW rims with 4x100mm and 5x120mm pin hole pattern

Distance bolts for quick clamp Mercedes Benz | 100 mm

Article number: 1690801007



- For one quick clamp

Distance bolts for quick clamp BMW | 120 mm

Article number: 1690801003



- For one quick clamp

Distance bolts for quick clamp Mercedes Benz and BMW | 125 mm

Article number: 1690401019



- For one quick clamp

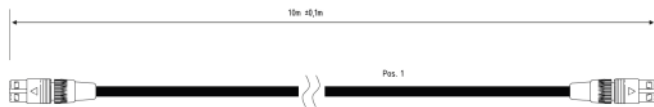
Toe press bar for Mercedes Benz

Article number: 1693600001



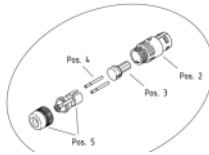
Power connection cable 10 m

Article number: 1690203025



Pin connections on both ends / Kontaktbelegung beidseitig

Pin	colour/Farbe
1	WH / ws
2,3,4	---
5	BN / br
6,7,8	---



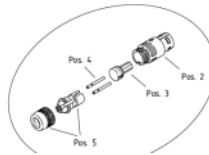
Power connection cable 15 m

Article number: 1690203041



Pin connections on both ends / Kontaktbelegung beiseite

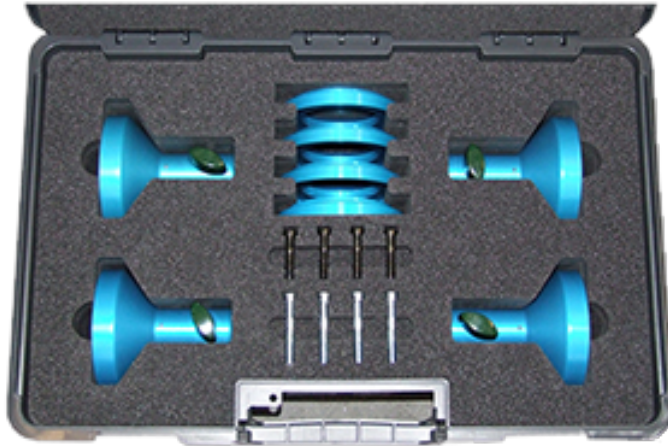
Pin	colour/Farbe
1	WH / ws
2,3,4	---
5	BN / br
6,7,8	---



Central clamp Porsche 911 GT3 and Turbo

Central clamping device for Porsche vehicles with center wheel bolt

Article number: 1690380002

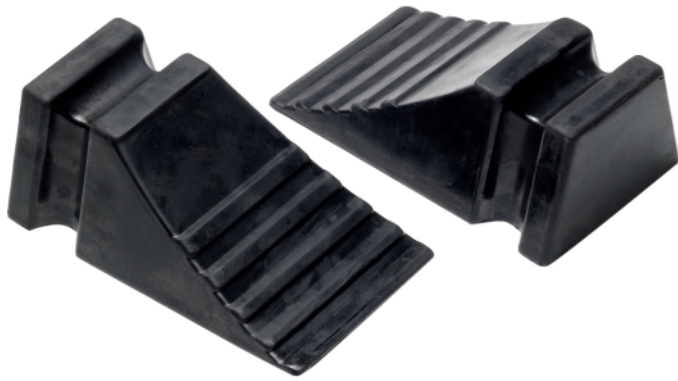


- Special tool for Porsche 911 Turbo since 2009 and Porsche 911 GT3 since 2010
- Quick and secure mounting on the vehicle
- Reduces clamping errors
- Official VW special tool: VAS 6830

Wheel chock set 2 pcs.

Prevents vehicle from rolling off the lift

Article number: 1692000156

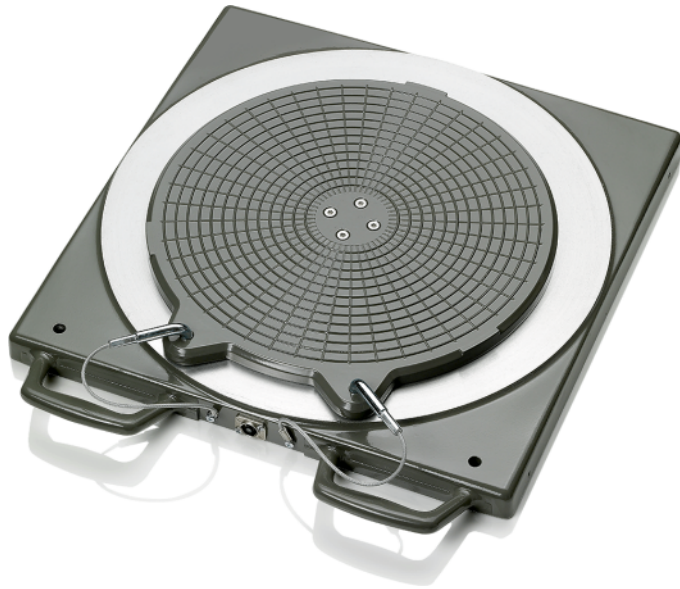


Scope of delivery:

- 2 x Wheel chock

Electronic aluminum turntable without connecting cable | Standard

Article number: 1690401011



- Enables full steering lock on CCD and Touchless aligner
- Very high quality and lifetime in workshop environment
- Standard turntable without connecting cable

Mounting set for MultiFit (4x) | for wall installation

Article number: 1690101094



Accessory cart | for OE quick clamps

For storing 4x OE quick clamps, brake locks, and steering wheel locks

Article number: 1690101127



Accessory cart | MultiFit clamps

For storing 4x MultiFit clamps, brake locks, and steering wheel locks

Article number: 1690101129



Electronic aluminum turntable without connecting cable | Precision

Article number: 1690401013



- Enables full steering lock on CCD and Touchless aligner
- Very high quality and lifetime in workshop environment
- Precision turntable without connecting cable
- Steel balls for minimal friction and maximum precision

Magnetic clamps for wheel bolts | 100mm

Set of magnetic clamps for magnetic wheel bolts

Article number: 1690701521



- Quick and gentle attachment on wheel bolts instead of the rim
- Secure and central hold for ultimate precision
- Suited for 3/4/5/6 hole rims

Magnetic clamps for wheel bolts | 75mm

Set of magnetic clamps for magnetic wheel bolts

Article number: 1690701508



- Quick and gentle attachment on wheel bolts instead of the rim
- Secure and central hold for ultimate precision
- Suited for 3/4/5/6 hole rims

Extension magnet for magnetic holder | 100 mm | 1 pc.

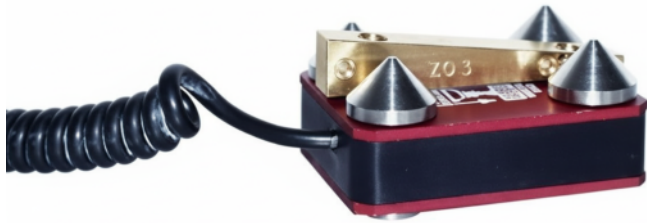
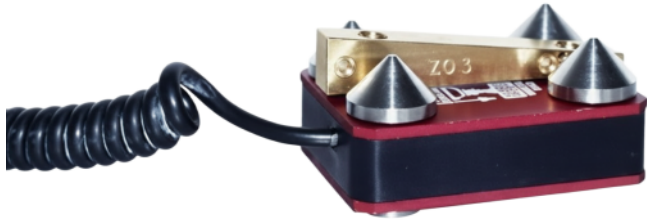
One 100mm magnet, three required for a magnetic clamp.

Article number: 1690701523



Romess adapter set for Vaneo type W414

Article number: 1693770004



- Accessory for Romess Inclinator 1693770002

Original part: Romess 09606-62

Multi-Fit wheel clamp with standard claws | 13 - 22" | 4 pcs.

Article number: 1690311112



- High quality claws for gentle attachment to rims
- Torque control for strong hold without deforming the rim

Steering Wheel Level Gauge | Bluetooth

Steering level gauge with electronic inclinometer for checking the steering level position during the wheel alignment.

Article number: 1693770683



Steering level gauge with electronic inclinometer for checking the steering level position during the wheel alignment. Save valuable time for every alignment as the steering level position is permanently monitored, especially when the vehicle is raised on the lift. Prevents crooked steering wheels and time-consuming comebacks.

Completely wireless and powered with integrated Li-Ion batteries. Alternatively, the USB used for charging the device can also be used for the data transmission.

- Measuring range: +/- 30° with accuracy of +/- 0,1°
- Max. Steering level position: 15°
- Operating time: 20 hrs
- Charging time: 4 hrs

Compatible with wheel aligners: BMW Q.Lign, BMW KDS 3D

Protective rubber cover for aluminum turntable

Article number: 1690402001



- Additional protection from dirt and liquids

Multi-Fit wheel clamp with standard claws | 13 - 22" | 1pc.

Article number: 1690311089



- High quality claws for gentle attachment to rims
- Torque control for strong hold without deforming the rim

Romess inclinometer with standard adapter | 230V

For measuring the level of Mercedes-Benz vehicles on the front and rear axle

Article number: 1693770002



For measuring the level of Mercedes-Benz vehicles on the front and rear axle

- Measuring range: $\pm 15^\circ$ with accuracy of $\pm 0.1^\circ$
- Interface: RS-232, USB
- Data transfer: manual (automatic data transfer requires the Romess data transfer and charging unit 1693770003)

The included standard adapter plate is only required for types 170, 202, 208 and 210.

Filling piece for aluminum precision turntable

1x Precision filling piece for one precision turntable. Required quantity per turntable: 2

Article number: 1690102041



1x Precision filling piece for one precision turntable. Required quantity per turntable: 2

Brake lock

Article number: 1690102212



Ballast bag 5 kg

Used for vehicles that require loading to a specific ride height in order to perform alignment

Article number: 1693740001



Ballast bag 20 kg

Used for vehicles that require loading to a specific ride height in order to perform alignment

Article number: 1693740003



Mechanical aluminum turntable Precision

Article number: 1690401028



- Very high quality and lifetime in workshop environment
- Steel balls for minimal friction and maximum precision

Mechanical turntable | Steel | with Nonius

370 x 350 x 42mm, max. load: 800kg, turnplate diameter: 308mm Matching filling pieces: 1690702157

Article number: 1690311002



Filling piece | for steel turntable 1690311002

1x Filling piece, required quantity: 2

Article number: 1690702157



Romess data transfer and charging unit | 230V

Accessory for Romess inclinometer 1693770002.

Article number: 1693770003



Accessory for Romess inclinometer 1693770002.

Charges inclinometer when inserted into charging station.
Automatic data transfer between Romess inclinometer and wheel aligner.

Automatic data transfer only on wheel aligners EasyCCD, Easy3D+ and Touchless.

Extension set for Multi-fit clamps | 23 - 28"

Article number: 1690311113



Filling piece (1x) for aluminum turntable

Article number: 1690102211



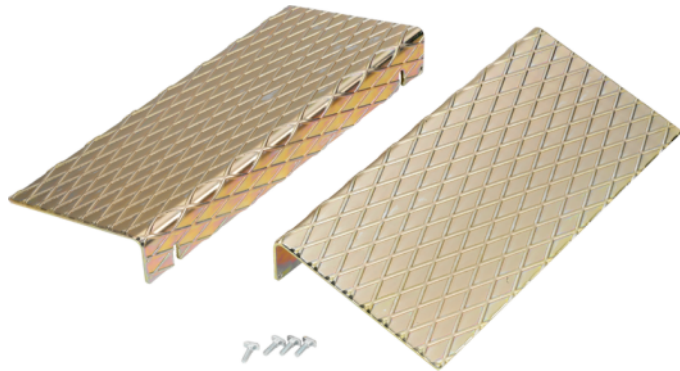
Steering wheel holder

Article number: 1690102213



Drive-on ramps for turntables and sliding plates

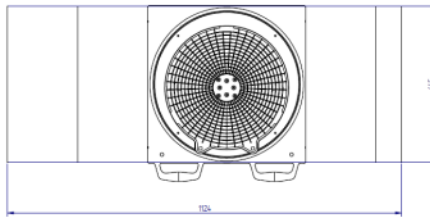
Article number: 1690401008



- Set of Drive-on ramps for turntables and sliding plates
- Suitable for lifts without cutouts for turntables or sliding plates, e.g. MOT lifts

Drive-on ramps for two aluminum turntables

Article number: 1690701052



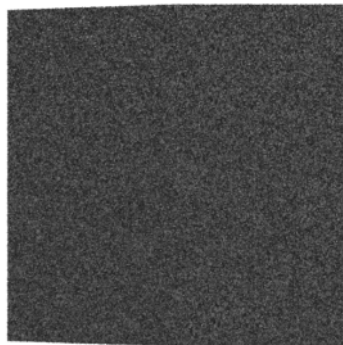
- Drive-on ramps for turntables including connecting piece and drive off protection
- Enables rolling compensation on lifts without embedded turntables

This product is suitable for two turntables.

Set of Drive-on ramps | for RaceScales

4x drive-on ramps, e.g. RaceScales on lifts without turntable recess.

Article number: 1692000221



- Set of Drive-on ramps for turntables and sliding plates
- Suitable for lifts without cutouts for turntables or sliding plates, e.g. MOT lifts
- Made from recycled rubber granulate
- Withstands snow, water, salt, oil under normal workshop conditions
- Temperature stable between -30°C to 80°C
- Produced free from pollutants according to REACH

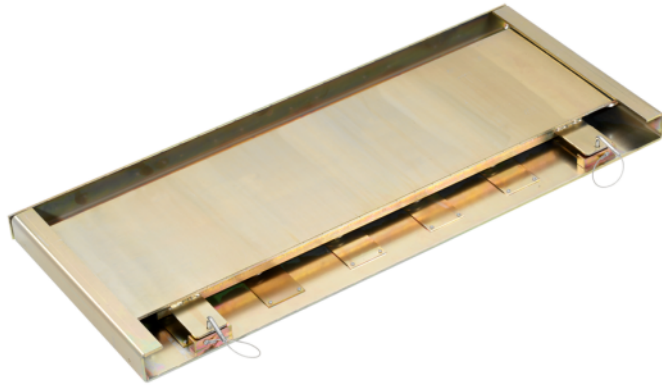
Dimensions:

- Height: 50mm
- Width: 495mm
- Length: 500mm
- Length rolling surface: 200mm
- Length slope: 300mm
- Slope: 8°

Sliding plate for rear axle | long

Long sliding plate for rear axle, 1050 mm

Article number: 1690401004

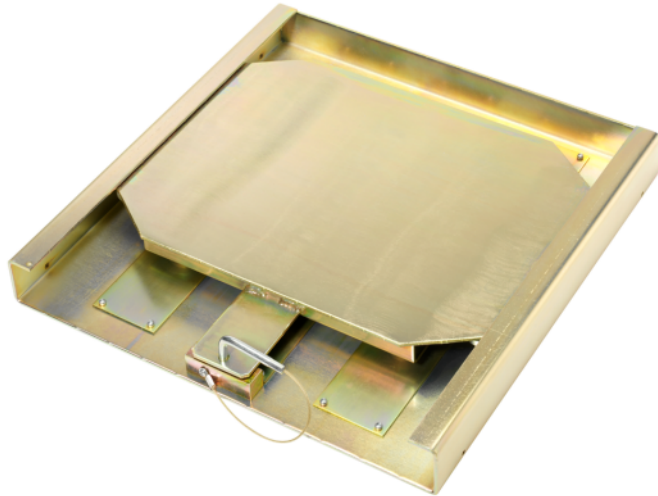


- +/-2.5° rotating range

Sliding plate for rear axle | short

Short sliding plate for rear axle, 450 mm

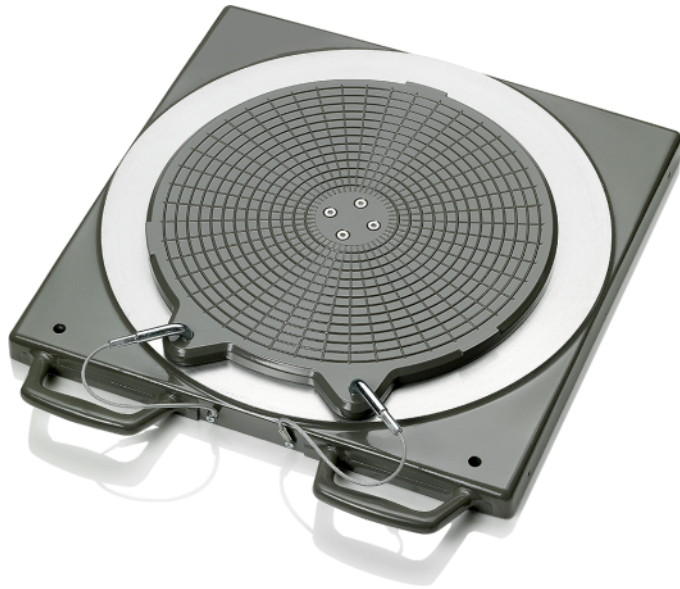
Article number: 1690401003



- +/- 10° rotating range

Mechanical aluminum turntable Standard

Article number: 1690501001



- Very high quality and lifetime in workshop environment

Set truck claws for 1 x Multi-fit clamp | Truck

Article number: 1690311115



For convex wheels mounted to a double-bearing hub and dually wheels.

Length: 10cm

Set softline claws for 1 x Multi-fit clamp | Softline rims

Article number: 1690311164



Replacement standard adapter for Romess inclinometer

Article number: 1693770160



- For types: 170, 202, 208, 210
- Not required for types 168, 220 and all newer types

Original part: Romess 09606-50

Q.Lign - Accessories



Lift Adaptation Extension (1x) | for wide vehicles on narrow lifts

Article number: 1690202173



Dust cover target board | Q.Lign

Article number: 1690202155



Self-centering quick clamp | for Lamborghini

Article number: 8900380016



Self-centering quick clamp for Porsche

Article number: 1690301003



ADAS target boards | for Q.Lign

Article number: 1690200013



Q.Grip | 25-37" | 1 pcs.

Article number: 1690101028



Adapter set Q.Grip | for Q.Lign | 4 pcs.

Article number: 1690101010



Trolley with 27" monitor | for Q.Lign

Article number: 1690201055



Printer for Beissbarth trolleys

Article number: 1693770415



Wall board for Q.Lign

Article number: 1690201054



Tablet | Android | 10.1"

Article number: 1693770644



Lift adaptation for Q.Lign

Article number: 1690201035



Emergency power box for Q.Lign

Article number: 1690201030

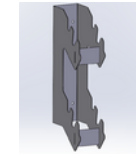
Power supply for Q.Lign Accessories | 19 V RRC

Article number: 1693770648



Storage kit | for 4x Q.Grip

Article number: 1690801048



Storage kit | for 4x MultiFit

Article number: 1690801047



Mouse and keyboard | Wireless

Article number: 1693770634



Inclinometer and steering wheel level | Mercedes-Benz

Article number: 1690102231



Accessory Cart | for Magnetic Clamps

Article number: 1690101128



Vehicle database update Q.Lign | Key Card

Article number: 1690002022



Mounting set for brake and steering wheel lock (2x) | for wall installation

Article number: 1690101089



Mounting set for OE quick clamps (4x) | for wall installation

Article number: 1690101090



Romess adapter set for M-Class type W163

Article number: 1690102216

Dust cover | trolley

Article number: 1690402021



Inground lift adaptation | for Q.Lign | 1x

Article number: 1690201122



Set 4x wall bracket | Q.Grip

Article number: 1690101077



VAS 701011/1 | Set 2x Magnetic clamp for VW Crafter | 130mm & 205mm bolt circles

Article number: 1690101084



Set 4x Magnetic clamp for light trucks and RVs | 6x130mm & 6x205mm bolt circles

Article number: 1690101083



Wall mount | Q.Lign T-Series | 515-880mm

Article number: 1690801053



Battery for Q.Lign | Li-Ion | 99 Wh

Article number: 1690203053



Duo-battery charging station for Q.Lign | incl. accessories

Article number: 1690201069



Bracket set for magnetic clamps (4x) | for wall installation

Article number: 1690101092



Self-centering quick clamp for Porsche

Article number: 1690380010



Self-centering quick clamp for Tesla

Article number: 1690380161



Brake pedal depressor

Article number: 1690401006



Steering wheel holder

Article number: 1690401007



Central clamp Porsche Carrera GT

Article number: 1690301002



Self-centering quick clamp for Ferrari

Article number: 1690381299



Quick clamp Mercedes-Benz | OEM

Article number: 1690801002



Quick clamp BMW | OEM

Article number: 1690801001



Distance bolts for quick clamp Mercedes Benz | 100 mm

Article number: 1690801007



Distance bolts for quick clamp BMW | 120 mm

Article number: 1690801003



Distance bolts for quick clamp Mercedes Benz and BMW | 125 mm

Article number: 1690401019



Toe press bar for Mercedes Benz

Article number: 1693600001



Power connection cable 10 m

Article number: 1690203025



Power connection cable 15 m

Article number: 1690203041



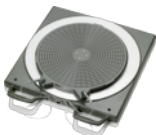
Central clamp Porsche 911 GT3 and Turbo

Article number: 1690380002



Wheel chock set 2 pcs.

Article number: 1692000156



Electronic aluminum turntable without connecting cable | Standard

Article number: 1690401011



Mounting set for MultiFit (4x) | for wall installation

Article number: 1690101094



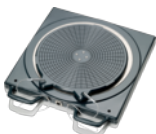
Accessory cart | for OE quick clamps

Article number: 1690101127



Accessory cart | MultiFit clamps

Article number: 1690101129



Electronic aluminum turntable without connecting cable | Precision

Article number: 1690401013



Magnetic clamps for wheel bolts | 100mm

Article number: 1690701521



Magnetic clamps for wheel bolts | 75mm

Article number: 1690701508



Extension magnet for magnetic holder | 100 mm | 1 pc.

Article number: 1690701523



Romess adapter set for Vaneo type W414

Article number: 1693770004



Multi-Fit wheel clamp with standard claws | 13 - 22" | 4 pcs.

Article number: 1690311112



Steering Wheel Level Gauge | Bluetooth

Article number: 1693770683



Protective rubber cover for aluminum turntable

Article number: 1690402001



Multi-Fit wheel clamp with standard claws | 13 - 22" | 1pc.

Article number: 1690311089



Romess inclinometer with standard adapter | 230V

Article number: 1693770002



Filling piece for aluminum precision turntable

Article number: 1690102041



Brake lock

Article number: 1690102212



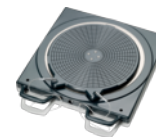
Ballast bag 5 kg

Article number: 1693740001



Ballast bag 20 kg

Article number: 1693740003



Mechanical aluminum turntable Precision

Article number: 1690401028



Mechanical turntable | Steel | with Nonius

Article number: 1690311002



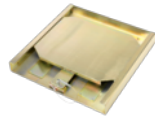
Filling piece | for steel turntable
1690311002

Article number: 1690702157



Sliding plate for rear axle | long

Article number: 1690401004



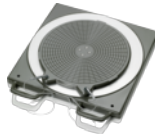
Sliding plate for rear axle | short

Article number: 1690401003



Romess data transfer and charging unit |
230V

Article number: 1693770003



Mechanical aluminum turntable Standard

Article number: 1690501001



Extension set for Multi-fit clamps | 23 - 28"

Article number: 1690311113



Set truck claws for 1 x Multi-fit clamp |
Truck

Article number: 1690311115



Filling piece (1x) for aluminum turntable

Article number: 1690102211



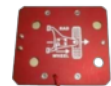
Set softline claws for 1 x Multi-fit clamp |
Softline rims

Article number: 1690311164



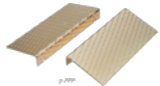
Steering wheel holder

Article number: 1690102213



Replacement standard adapter |for
Romess inclinometer

Article number: 1693770160



Drive-on ramps for turntables and sliding
plates

Article number: 1690401008



Drive-on ramps for two aluminum
turntables

Article number: 1690701052



Set of Drive-on ramps | for RaceScales

Article number: 1692000221

IMPORTANT NOTES

- Please notice: This list contains spare parts, too.
- Without instruction or assembly.
- Delivery ex works including packaging.

VERSION 2026.05.12 – PRICES ON REQUEST

- Starting from now all previous lists will lose their validity.
- Please read our general terms and conditions in the latest version before ordering; to be found under www.beissbarth.com.

Order number 1 693 602 008 **Print norm** BB XXX / XX.XX.2020 DE · Subject to technical and program changes, errors excepted.

Beissbarth Automotive Testing Solutions GmbH

Friedrichshafener Str. 602
82205 Gilching, Germany
sales@beissbarth.com
www.beissbarth.com

Telefon: +49-(0)89-14901-0
Telefax: +49-(0)89-14901-246

