

Dialogannahme

EASY CCD - ACCESSORIES

Version 2026.05.12 – Prices on request

Filling piece | for steel turntable 1690311002

1x Filling piece, required quantity: 2

Article number: 1690702157



Filling piece (1x) for aluminum turntable

Article number: 1690102211



Distance bolt 70mm (1x) | for ProClamp 1690100001

3x required per clamp

Article number: 1690102200



Windows 10 PC Upgrade | pre-installed | for CCD, 3D and Touchless

Article number: 1690101025



ProClamp wheel clamp | 13 - 23" | 1 pc

Wheel Clamp with rim friendly distance bolts to avoid metal-to-metal contact

Article number: 1690100001

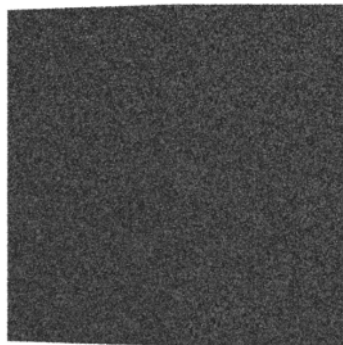


- Rim clamping range: 12 - 23"
- Wheel clamping range: 490 - 884mm

Set of Drive-on ramps | for RaceScales

4x drive-on ramps, e.g. RaceScales on lifts without turntable recess.

Article number: 1692000221



- Set of Drive-on ramps for turntables and sliding plates
- Suitable for lifts without cutouts for turntables or sliding plates, e.g. MOT lifts
- Made from recycled rubber granulate
- Withstands snow, water, salt, oil under normal workshop conditions
- Temperature stable between -30°C to 80°C
- Produced free from pollutants according to REACH

Dimensions:

- Height: 50mm
- Width: 495mm
- Length: 500mm
- Length rolling surface: 200mm
- Length slope: 300mm
- Slope: 8°

Vehicle database update Cars & Vans Europe | Online Download

Article number: 1690008100



[Data/licenses](#) [Key codes](#) [My profile](#) [Admin Center](#) [Document Center](#) [About us](#)

Data/licenses

We need the serial number of your device for the **licensing** and for determining the available software.

The serial number can be found on the rating plate.

The serial number consists of a two-digit product identification and a seven-digit device number.

Product identification*

Device number*

Mandatory fields are marked with *.

Send

Skip

- Online download on base-licensecenter.com

USB Remote control | for EasyCCD, Easy3D+ and Touchless

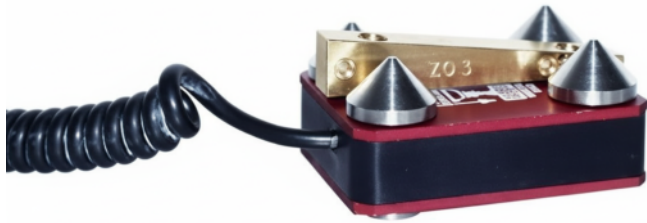
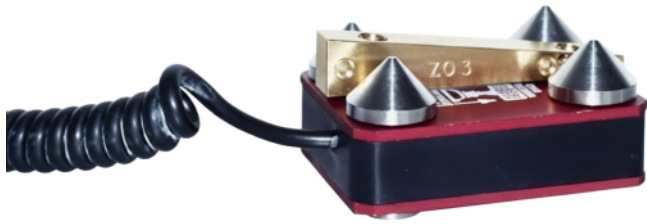
Remote control with USB receiver. For EasyCCD, Easy3D+ and Touchless. Requires software update of the aligner program. Powered by 2x AAA batteries.

Article number: 1693770586



Romess adapter set for Vaneo type W414

Article number: 1693770004



- Accessory for Romess Inclinator 1693770002

Original part: Romess 09606-62

Replacement standard adapter for Romess inclinometer

Article number: 1693770160



- For types: 170, 202, 208, 210
- Not required for types 168, 220 and all newer types

Original part: Romess 09606-50

Brake lock

Article number: 1690102212



Steering wheel holder

Article number: 1690102213



Mounting set for MultiFit (4x) | for wall installation

Article number: 1690101094



Mechanical turntable | Steel | with Nonius

370 x 350 x 42mm, max. load: 800kg, turnplate diameter: 308mm Matching filling pieces: 1690702157

Article number: 1690311002



PC Upgrade 8R Tech+ to EasyCCD+ | pre-installed Windows 10 PC

Scope of delivery: Pre-installed Windows 10 PC EasyCCD+ program with ADAS feature Europe vehicle database Only for existing ML 8R Tech+ wheel aligners with CF, CX, or LD Dongle

Article number: 1690311216



Ballast bag 20 kg

Used for vehicles that require loading to a specific ride height in order to perform alignment

Article number: 1693740003



Ballast bag 5 kg

Used for vehicles that require loading to a specific ride height in order to perform alignment

Article number: 1693740001



Filling piece for aluminum precision turntable

1x Precision filling piece for one precision turntable. Required quantity per turntable: 2

Article number: 1690102041



1x Precision filling piece for one precision turntable. Required quantity per turntable: 2

Steering Wheel Level Gauge | Bluetooth

Steering level gauge with electronic inclinometer for checking the steering level position during the wheel alignment.

Article number: 1693770683



Steering level gauge with electronic inclinometer for checking the steering level position during the wheel alignment. Save valuable time for every alignment as the steering level position is permanently monitored, especially when the vehicle is raised on the lift. Prevents crooked steering wheels and time-consuming comebacks.

Completely wireless and powered with integrated Li-Ion batteries. Alternatively, the USB used for charging the device can also be used for the data transmission.

- Measuring range: +/- 30° with accuracy of +/- 0,1°
- Max. Steering level position: 15°
- Operating time: 20 hrs
- Charging time: 4 hrs

Compatible with wheel aligners: BMW Q.Lign, BMW KDS 3D

Vehicle database update CCD/Easy3D | Key Card

Article number: 1690002023



- Access to the newest vehicles specs directly from the OEM
- Authorises the licensing of all IAM vehicle databases for the calendar year in which the Key Card has been activated

Accessory cart | MultiFit clamps

For storing 4x MultiFit clamps, brake locks, and steering wheel locks

Article number: 1690101129



Accessory cart | for OE quick clamps

For storing 4x OE quick clamps, brake locks, and steering wheel locks

Article number: 1690101127



Romess data transfer and charging unit | 230V

Accessory for Romess inclinometer 1693770002.

Article number: 1693770003



Accessory for Romess inclinometer 1693770002.

Charges inclinometer when inserted into charging station.
Automatic data transfer between Romess inclinometer and wheel aligner.

Automatic data transfer only on wheel aligners EasyCCD, Easy3D+ and Touchless.

Romess inclinometer with standard adapter | 230V

For measuring the level of Mercedes-Benz vehicles on the front and rear axle

Article number: 1693770002



For measuring the level of Mercedes-Benz vehicles on the front and rear axle

- Measuring range: $\pm 15^\circ$ with accuracy of $\pm 0.1^\circ$
- Interface: RS-232, USB
- Data transfer: manual (automatic data transfer requires the Romess data transfer and charging unit 1693770003)

The included standard adapter plate is only required for types 170, 202, 208 and 210.

Calibration device for CCD

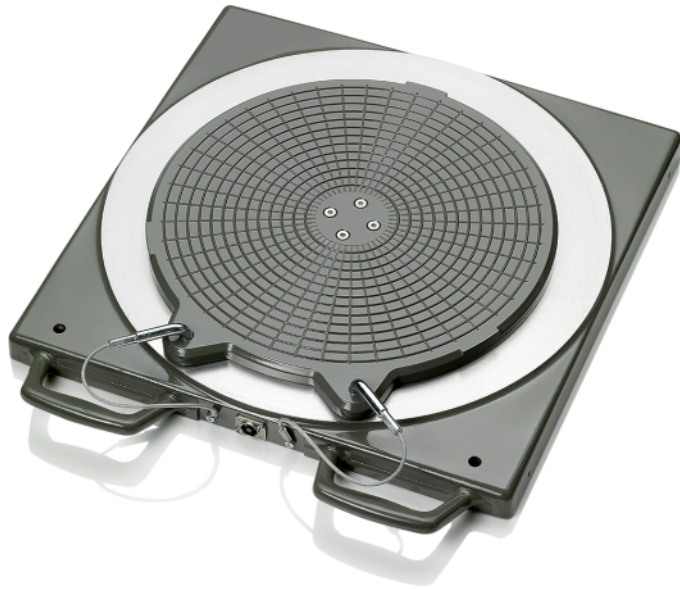
Calibration device for CCD sensor heads in the field

Article number: 1690401066



Electronic aluminum turntable without connecting cable | Standard

Article number: 1690401011

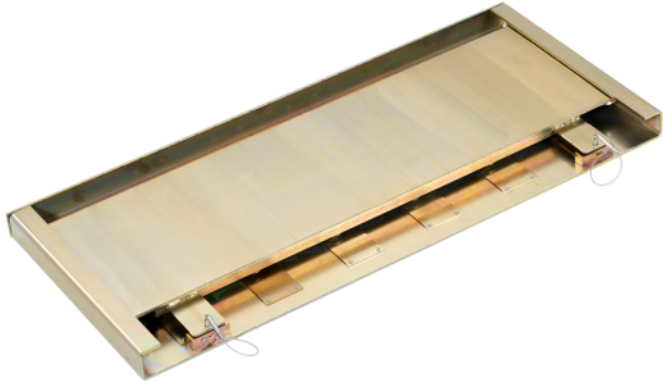


- Enables full steering lock on CCD and Touchless aligner
- Very high quality and lifetime in workshop environment
- Standard turntable without connecting cable

Sliding plate for rear axle | long

Long sliding plate for rear axle, 1050 mm

Article number: 1690401004

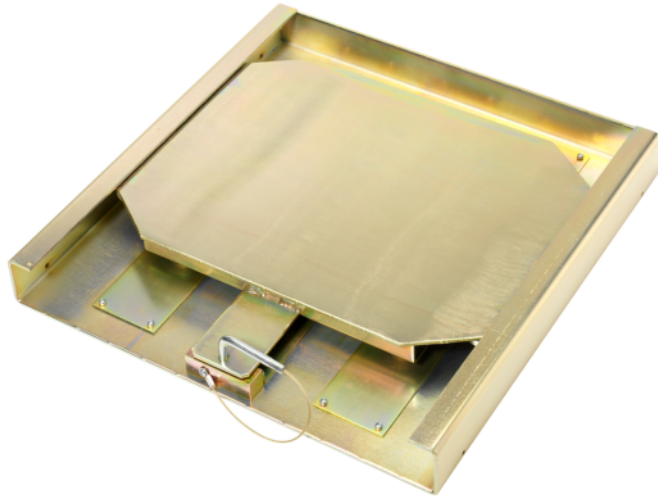


- +/-2.5° rotating range

Sliding plate for rear axle | short

Short sliding plate for rear axle, 450 mm

Article number: 1690401003



- +/- 10° rotating range

Wallboard for sensor heads

Only Easy CCD+ Kit version

Article number: 1690311146



- Space saving solution for charging sensor heads on the wall
- Frees up space in the workshop and safely stores sensor heads when not in use

Set truck claws for 1 x Multi-fit clamp | Truck

Article number: 1690311115



For convex wheels mounted to a double-bearing hub and dually wheels.

Length: 10cm

Set softline claws for 1 x Multi-fit clamp | Softline rims

Article number: 1690311164



Extension set for Multi-fit clamps | 23 - 28"

Article number: 1690311113



Multi-Fit wheel clamp with standard claws | 13 - 22" | 1pc.

Article number: 1690311089



- High quality claws for gentle attachment to rims
- Torque control for strong hold without deforming the rim

Multi-Fit wheel clamp with standard claws | 13 - 22" | 4 pcs.

Article number: 1690311112



- High quality claws for gentle attachment to rims
- Torque control for strong hold without deforming the rim

Mechanical aluminum turntable Precision

Article number: 1690401028



- Very high quality and lifetime in workshop environment
- Steel balls for minimal friction and maximum precision

Connecting cable for electronic turntables

Article number: 1690403001



- Connecting cable between electronic turntables and sensor head
- Enables full steering lock on CCD and Touchless aligner

Protective rubber cover for aluminum turntable

Article number: 1690402001



- Additional protection from dirt and liquids

Spoiler adapter 50 mm | Precision

Spoiler adapter for CCD wheel aligners | with spirit level

Article number: 1690401014



Precision spoiler adapter Porsche

For alignment of vehicles that have been modified or equipped with sport packages

Article number: 1690301004



- Possible adjustment from 85 - 165 mm
- For use in combination with VAG 1813, VAG 1995 and VAS 6141

Electronic aluminum turntable without connecting cable | Precision

Article number: 1690401013



- Enables full steering lock on CCD and Touchless aligner
- Very high quality and lifetime in workshop environment
- Precision turntable without connecting cable
- Steel balls for minimal friction and maximum precision

Software upgrade Easy CCD

Article number: 1690320131



- DAS calibration jig orientation
- Highly automated SmartTest for direct reception lanes
- New intuitive user interface

Important: Only for Beissbarth 8-CCD wheel aligners with serial numbers C6, CF, CF, CX, and LD!

Cable set

Article number: 1690401012



- Emergency cable for power and data transmission of the sensor heads

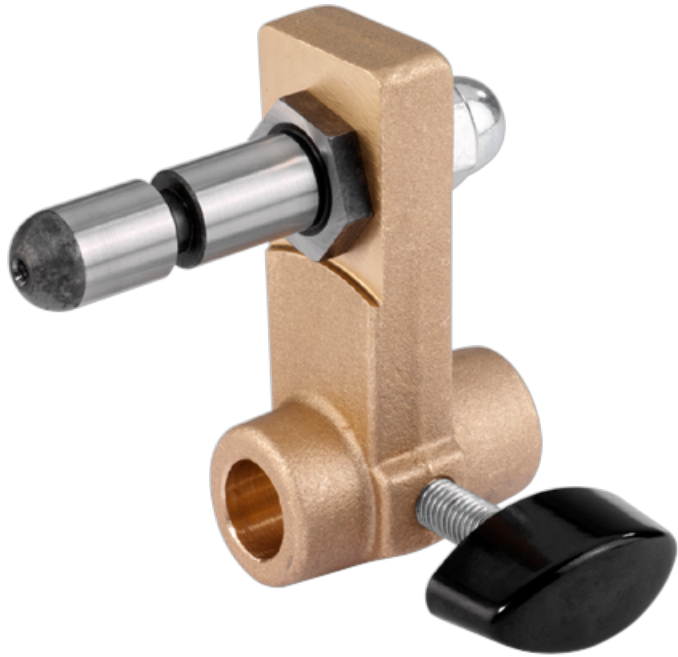
Spoiler adapter 100 mm

Article number: 1690121001



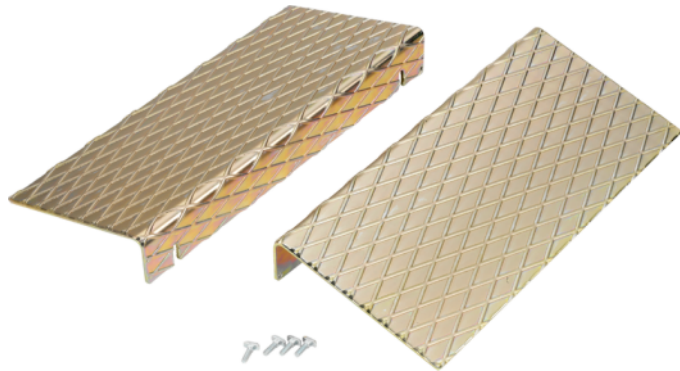
Spoiler adapter 50 mm

Article number: 1690401005



Drive-on ramps for turntables and sliding plates

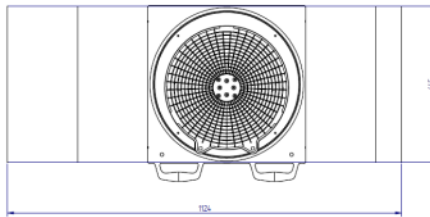
Article number: 1690401008



- Set of Drive-on ramps for turntables and sliding plates
- Suitable for lifts without cutouts for turntables or sliding plates, e.g. MOT lifts

Drive-on ramps for two aluminum turntables

Article number: 1690701052

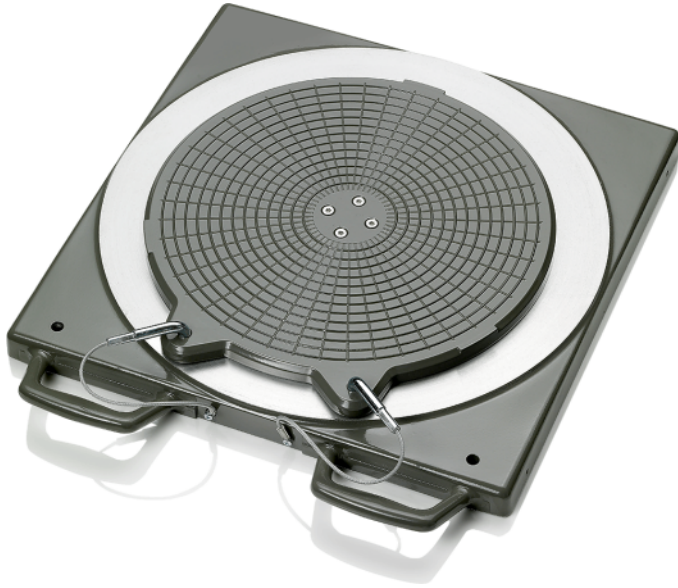


- Drive-on ramps for turntables including connecting piece and drive off protection
- Enables rolling compensation on lifts without embedded turntables

This product is suitable for two turntables.

Mechanical aluminum turntable Standard

Article number: 1690501001



- Very high quality and lifetime in workshop environment

Easy CCD - Accessories



Filling piece | for steel turntable 1690311002

Article number: 1690702157



Filling piece (1x) for aluminum turntable

Article number: 1690102211



Distance bolt 70mm (1x) | for ProClamp 1690100001

Article number: 1690102200



Windows 10 PC Upgrade | pre-installed | for CCD, 3D and Touchless

Article number: 1690101025



ProClamp wheel clamp | 13 - 23" | 1 pc

Article number: 1690100001



Set of Drive-on ramps | for RaceScales

Article number: 1692000221



Vehicle database update Cars & Vans Europe | Online Download

Article number: 1690008100



USB Remote control | for EasyCCD, Easy3D+ and Touchless

Article number: 1693770586



Romess adapter set for Vaneo type W414

Article number: 1693770004



Replacement standard adapter |for Romess inclinometer

Article number: 1693770160



Brake lock

Article number: 1690102212



Steering wheel holder

Article number: 1690102213



Mounting set for MultiFit (4x) | for wall installation

Article number: 1690101094



Mechanical turntable | Steel | with Nonius

Article number: 1690311002



PC Upgrade 8R Tech+ to EasyCCD+ | pre- installed Windows 10 PC

Article number: 1690311216



Ballast bag 20 kg

Article number: 1693740003



Ballast bag 5 kg

Article number: 1693740001



Filling piece for aluminum precision turntable

Article number: 1690102041



Steering Wheel Level Gauge | Bluetooth

Article number: 1693770683



Vehicle database update CCD/Easy3D | Key Card

Article number: 1690002023



Accessory cart | MultiFit clamps

Article number: 1690101129



Accessory cart | for OE quick clamps

Article number: 1690101127



Romess data transfer and charging unit | 230V

Article number: 1693770003



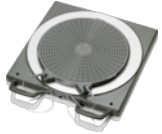
Romess inclinometer with standard adapter | 230V

Article number: 1693770002



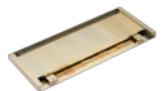
Calibration device for CCD

Article number: 1690401066



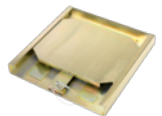
Electronic aluminum turntable without connecting cable | Standard

Article number: 1690401011



Sliding plate for rear axle | long

Article number: 1690401004



Sliding plate for rear axle | short

Article number: 1690401003



Wallboard for sensor heads

Article number: 1690311146



Set truck claws for 1 x Multi-fit clamp | Truck

Article number: 1690311115



Set softline claws for 1 x Multi-fit clamp | Softline rims

Article number: 1690311164



Extension set for Multi-fit clamps | 23 - 28"

Article number: 1690311113



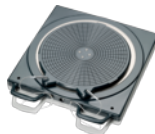
Multi-Fit wheel clamp with standard claws | 13 - 22" | 1pc.

Article number: 1690311089



Multi-Fit wheel clamp with standard claws | 13 - 22" | 4 pcs.

Article number: 1690311112



Mechanical aluminum turntable Precision

Article number: 1690401028



Connecting cable for electronic turntables

Article number: 1690403001



Protective rubber cover for aluminum turntable

Article number: 1690402001



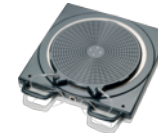
Spoiler adapter 50 mm | Precision

Article number: 1690401014



Precision spoiler adapter Porsche

Article number: 1690301004



Electronic aluminum turntable without connecting cable | Precision

Article number: 1690401013



Software upgrade Easy CCD

Article number: 1690320131



Cable set

Article number: 1690401012



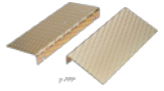
Spoiler adapter 100 mm

Article number: 1690121001



Spoiler adapter 50 mm

Article number: 1690401005



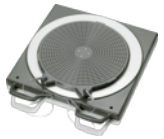
Drive-on ramps for turntables and sliding plates

Article number: 1690401008



Drive-on ramps for two aluminum turntables

Article number: 1690701052



Mechanical aluminum turntable Standard

Article number: 1690501001

IMPORTANT NOTES

- Please notice: This list contains spare parts, too.
- Without instruction or assembly.
- Delivery ex works including packaging.

VERSION 2026.05.12 – PRICES ON REQUEST

- Starting from now all previous lists will lose their validity.
- Please read our general terms and conditions in the latest version before ordering; to be found under www.beissbarth.com.

Order number 1 693 602 008 **Print norm** BB XXX / XX.XX.2020 DE · Subject to technical and program changes, errors excepted.

Beissbarth Automotive Testing Solutions GmbH

Friedrichshafener Str. 602
82205 Gilching, Germany
sales@beissbarth.com
www.beissbarth.com

Telefon: +49-(0)89-14901-0

Telefax: +49-(0)89-14901-246

