

Dialogannahme

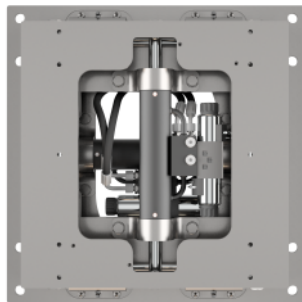
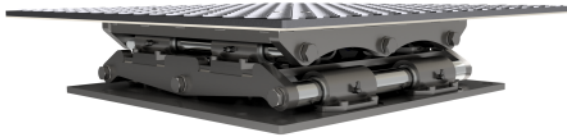
TEST LANES

Version 2025.07.03 – Prices on request

Joint Play Detector GST 8600 | Truck | 20t | 400V

Quick detection of defects and wear on wheel bearings, steering parts, suspension, stabilizers, and trailer couplings on trucks with up to 20t axle loads

Article number: 1 691 850 200



Joint Play Detector Truck 20t - Quick detection of defects and wear on trucks with up to 20t axle load:

- wheel bearings,
- steering parts,
- suspension,
- stabilizers,
- Kingpins and
- trailer couplings

Advantages:

- Smooth movement due to powerful hydraulic unit with high precision for easy and fast positioning
- Low-noise under-oil hydraulic power unit
- Two digital test plates built into the foundation at ground level
- Galvanized test plates with integrated, digital valve control electronics
- Bearing is provided by extra-robust, hard-chrome plated steel shafts
- Extremely robust and low-maintenance design for long service life
- Test plates can be moved in horizontal, vertical, and transversal directions
- Further operating modes including automatic modes (optionally)
- Wireless radio hand lamp with one-hand operation for movements control
- Wireless radio hand lamp with long-life LEDs and lens for an ideal light beam angle
- Suitable for existing Beissbarth foundation frames (as used for GST-8508)
- Suitable for all popular foundation frames (accessories required)
- Meets the requirements of Directive 2014/45/EU

Standard swinging movements:

- Longitudinal and transverse, opposite directions

Optional swinging movements upgrades:

- Longitudinal and transverse, same direction (1691853206)
- Automatic longitudinal and transverse, same and opposite directions (1691853203)
- Automatic circular (1691853204)
- Automatic diagonal (1691853205)
- Single wheel, left / right (1691853208)
- Automatic center (1691853207)
- All movements (1691851204)

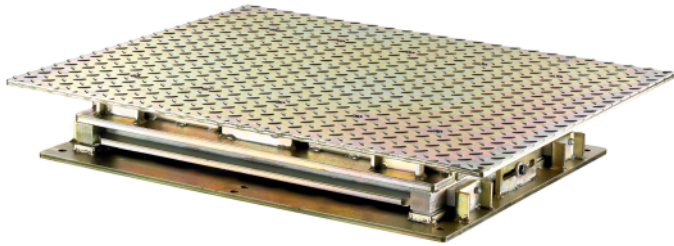
Scope of delivery:

- 2x test plates
- Hydraulic power unit including wiring
- Electrical control box including wiring
- Wireless hand lamp including charging station and power supply
- Hydraulic hose set

Joint play detector GST 8508 | 400V

Quick detection of defects and wear on suspension systems on two-tracks trucks with up to 16t axle load. Stand alone product

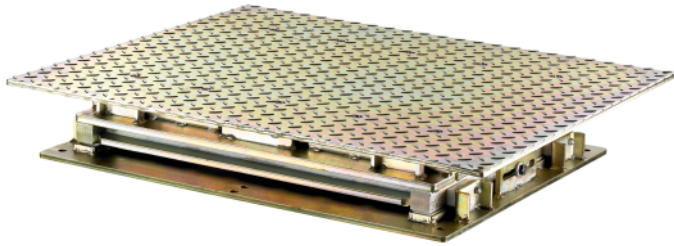
Article number: 1 691 850 100



Joint play detector GST 8508 | 230V

Quick detection of defects and wear on suspension systems on two-tracks trucks with up to 16t axle load. Stand alone product

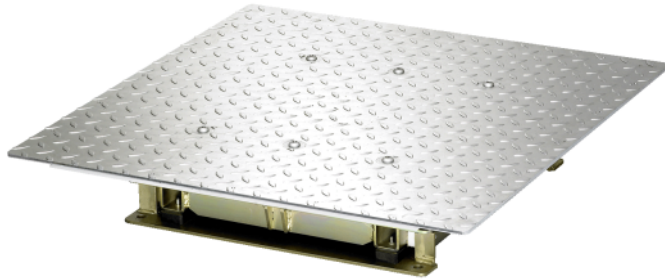
Article number: 1 691 850 101



Joint play detector GST 651 | 400 V

To detect defects and wear in the suspension systems of double-track vehicles | up to 4 t axle load

Article number: 1 691 650 000



- The geometry of the axle to be tested is displaced by moving the test plates of the GST 6xx. This makes it possible to detect impermissible play at joints and wheel bearings or to localise cracks at stub axles for example.
- The GST 651 is only to be used for the inspection of double-track vehicles with a maximum axle load of 4000 kg.
- Remote control over control lamp with control buttons (Ø 60 mm, length 205 mm, incl. Halogen bulb with reflector, GU5,3 / 38°, 12 V / 20 W)

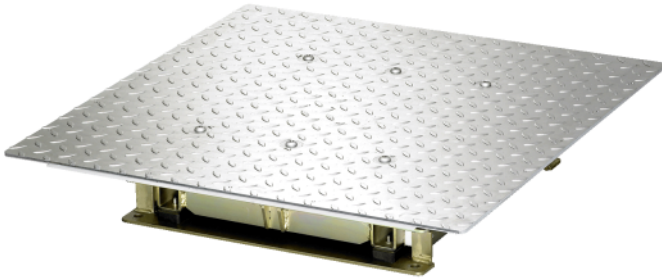
Scope of delivery:

- Test plates (2x)
- Control module incl. control lamp
- Hydraulic unit
- Hydraulic line fitting set
- Fitting set
- Hydraulic fluid (Type of fluid DIN 51524 VG 22)

Joint play detector GST 651 | 230 V

To detect defects and wear in the suspension systems of double-track vehicles | up to 4 t axle load

Article number: 1 691 650 001



- The geometry of the axle to be tested is displaced by moving the test plates of the GST 6xx. This makes it possible to detect impermissible play at joints and wheel bearings or to localise cracks at stub axles for example.
- The GST 651 is only to be used for the inspection of double-track vehicles with a maximum axle load of 4000 kg.
- Remote control over control lamp with control buttons (Ø 60 mm, length 205 mm, incl. Halogen bulb with reflector, GU5,3 / 38°, 12 V / 20 W)

Scope of delivery:

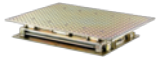
- Test plates (2x)
- Control module incl. control lamp
- Hydraulic unit
- Hydraulic line fitting set
- Fitting set
- Hydraulic fluid (Type of fluid DIN 51524 VG 22)

Play Detector



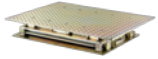
Joint Play Detector GST 8600 | Truck | 20t | 400V

Article number: 1 691 850 200



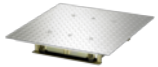
Joint play detector GST 8508 | 400V

Article number: 1 691 850 100



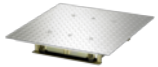
Joint play detector GST 8508 | 230V

Article number: 1 691 850 101



Joint play detector GST 651 | 400 V

Article number: 1 691 650 000



Joint play detector GST 651 | 230 V

Article number: 1 691 650 001

IMPORTANT NOTES

- Please notice: This list contains spare parts, too.
- Without instruction or assembly.
- Delivery ex works including packaging.

VERSION 2025.07.03 – PRICES ON REQUEST

- Starting from now all previous lists will lose their validity.
- Please read our general terms and conditions in the latest version before ordering; to be found under www.beissbarth.com.

Beissbarth Automotive Testing Solutions GmbH

Friedrichshafener Str. 602
82205 Gilching, Germany
sales@beissbarth.com
www.beissbarth.com

Telefon: +49-(0)89-14901-0

Telefax: +49-(0)89-14901-246

Order number 1 693 602 008 **Print norm** BB XXX / XX.XX.2020 DE · Subject to technical and program changes, errors excepted.

