

Dialogannahme

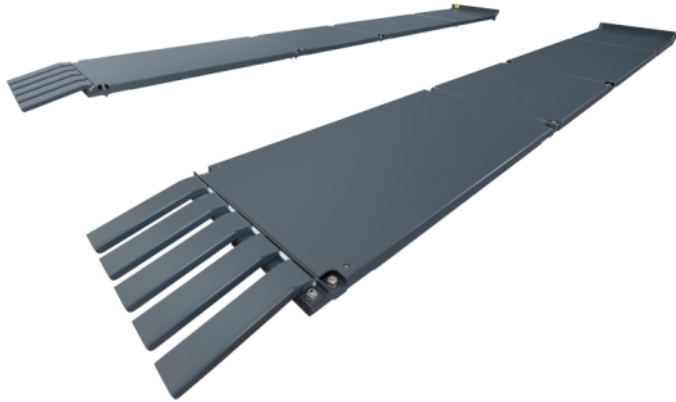
**RENAULT**

Version 2023.12.06 – Prices on request

## Levelable test bay LTB 100

For headlight adjusting at a test bay without lift | Complies with German PTI directive and OE specifications

**Article number: 1 692 100 030**



- Your test bay for headlight testing - Levelled according to the German PTI directive - In line with the guideline
- Ground-based solution as a leveled alternative to lifts (economical, space-saving, maintenance-free)
- Practical retrofit solution for uneven workshop floors
- Particularly suitable for installation on workshop pits
- Modular design
- Drive-through solutions for vehicle check-in (option)
- Compensation and fine adjustment by means of 4 wheel set-up elements (4-meter version)
- Robust thanks to KTL powder coating
- Wheel alignment checks for wheelbases up to 4325 mm (with extension)

### LTB 100: The right modules for your workshop

- Expandable by LTB modules e.g. - to a system length of 6 m (standard 4 m) for wheelbases from 1810 - 4325 mm - with drive-on ramp as a drive-through solution - for wheel alignment from small cars to vans

## Levelable test bays

---



**Levelable test bay LTB 100**  
Article number: 1 692 100 030

# IMPORTANT NOTES

- Please notice: This list contains spare parts, too.
- Without instruction or assembly.
- Delivery ex works including packaging.

## VERSION 2023.12.06 – PRICES ON REQUEST

- Starting from now all previous lists will lose their validity.
- Please read our general terms and conditions in the latest version before ordering; to be found under [www.beissbarth.com](http://www.beissbarth.com).

**Order number** 1 693 602 008 **Print norm** BB XXX / XX.XX.2020 DE · Subject to technical and program changes, errors excepted.

### Beissbarth Automotive Testing Solutions GmbH

Hanauer Straße 101  
80993 Munich, Germany  
[sales@beissbarth.com](mailto:sales@beissbarth.com)  
[www.beissbarth.com](http://www.beissbarth.com)

Telefon: +49-(0)89-14901-0  
Telefax: +49-(0)89-14901-246

