

Dialogannahme

# EASY TREAD - ACCESSORIES

Version 2026.02.19 – Prices on request

## PC trolley for Easy Tread

*Trolley with PC, monitor, mouse, and keyboard (no printer included)*

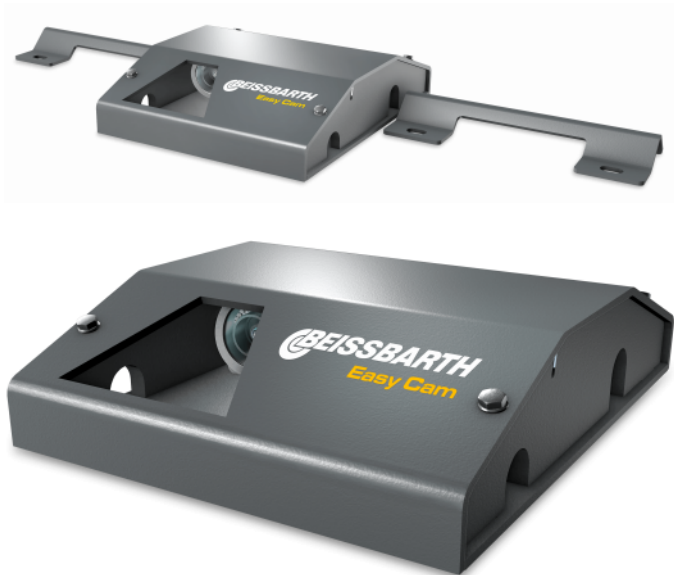
**Article number: 1691200023**



## License plate recognition Easy Cam | Above ground

*Easy Cam license plate recognition with housing for above ground installation*

**Article number: 1691200008**

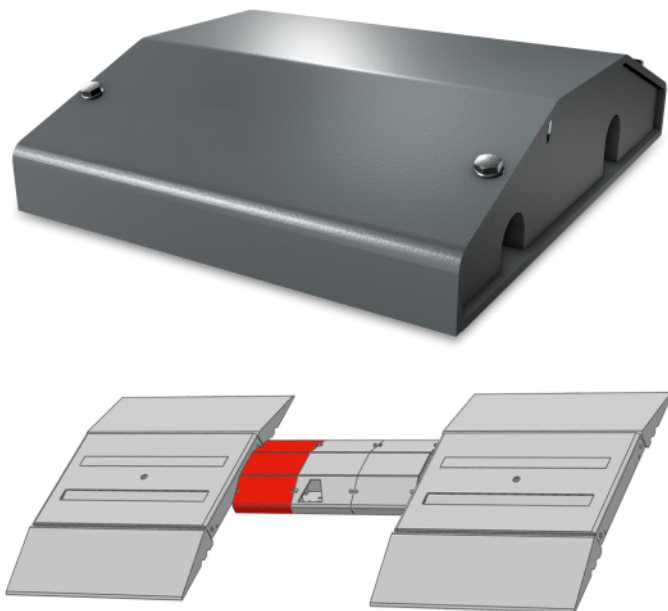




## Cable tunnel | for onground installations of Easy Tread

*Cable tunnel for drive-over protection*

**Article number: 1691201023**

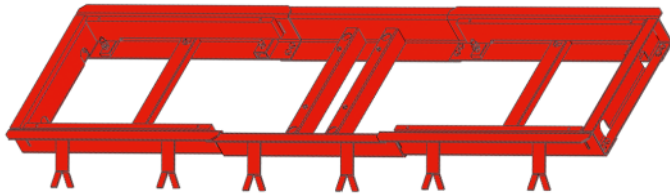
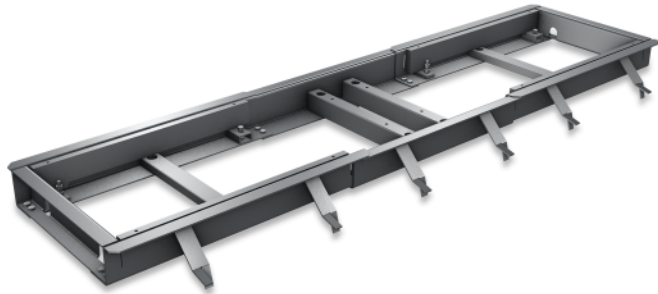


- Cable tunnel to be used as cable bridge for the gaps between the ANPR camera housing and the Easy Tread modules (left and right) as well as roll-over protection for lateral cable outlets

## Foundation frame for Easy Tread and VAS 741083 RDS

*Foundation frame to be cemented in with filling pieces and socket for the EasyCam*

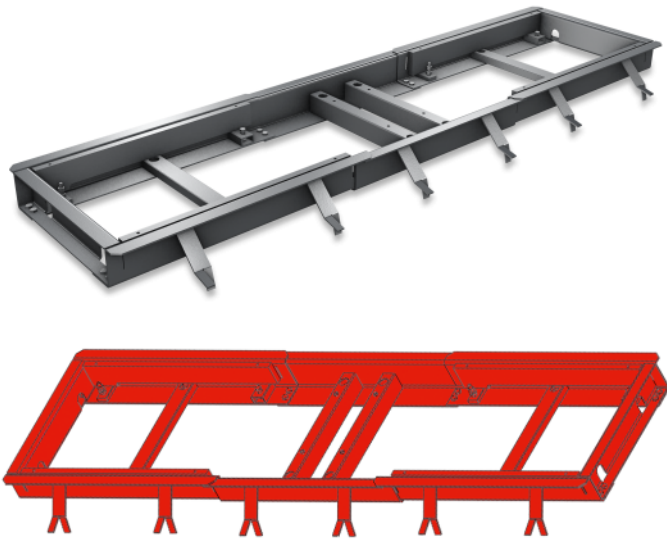
**Article number: 1691200010**



## Inground frame for Easy Tread and VAS 741083 RDS

*Inground frame to be cemented in with filling pieces and socket for the EasyCam. 200mm wider than standard inground frame*

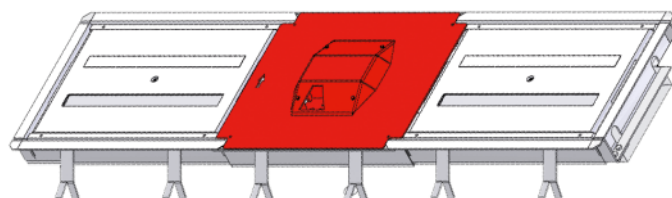
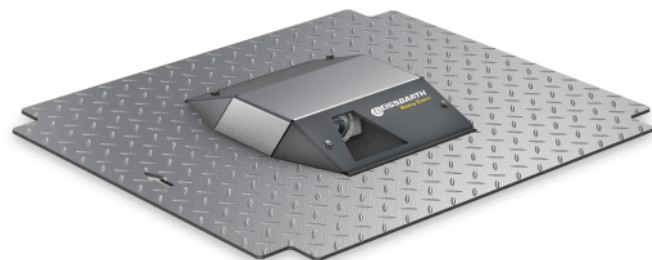
**Article number: 1691200028**



## License plate recognition Easy Cam | Inground

*EasyCam inground camera kit incl. centre cover*

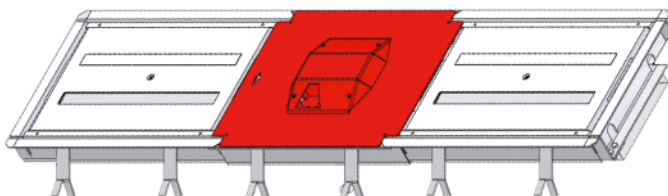
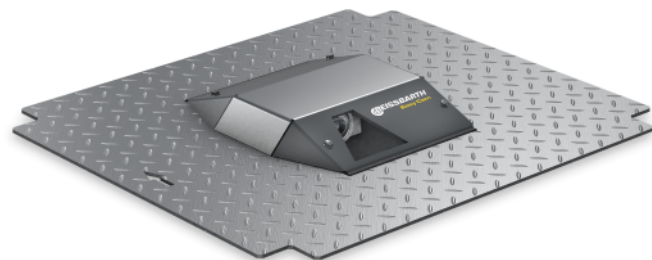
**Article number: 1691200009**



## License plate recognition Easy Cam | Inground +200mm

*EasyCam inground camera kit incl. centre cover*

**Article number: 1691200027**

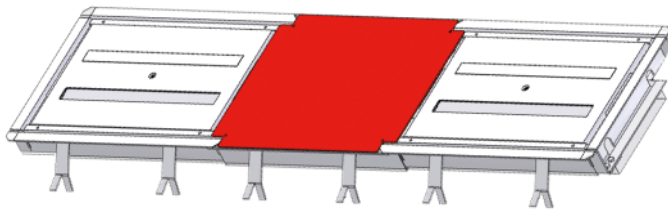
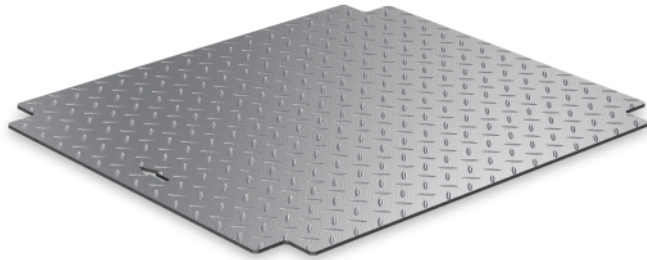




## Centre cover Easy Tread and VAS 741083 RDS

*Cover panel for inground version without EasyCam*

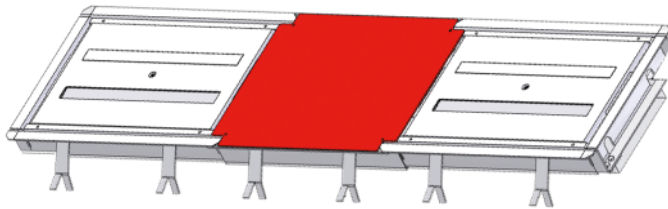
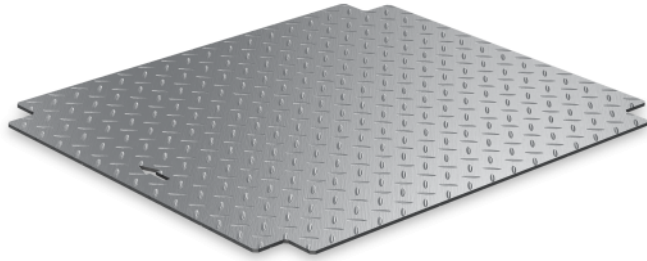
**Article number: 1691202069**



## Centre cover Easy Tread | Inground +200mm

Cover panel for inground version without EasyCam

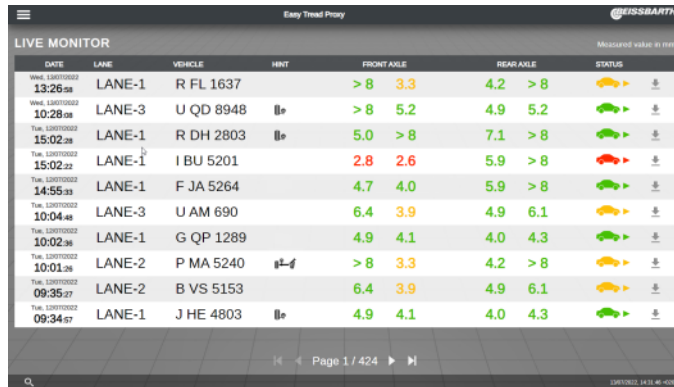
**Article number: 1691202095**



# Easy Tread - Connectivity Kit

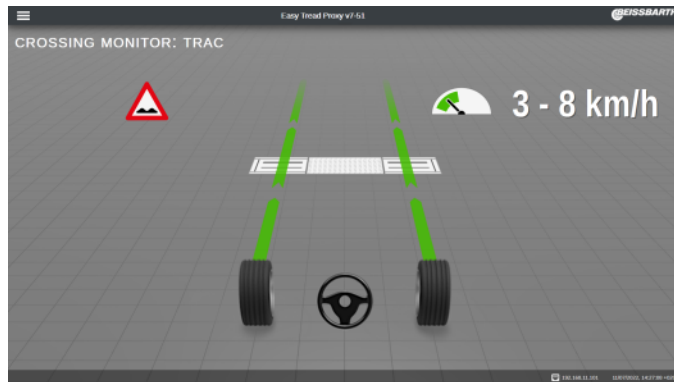
Connectivity Upgrade Kit for easy integration into workshop networks, ASA connection, and cumulative display of values from multiple Easy Tread installations.

Article number: 1691200022



The screenshot shows the 'LIVE MONITOR' interface of the Easy Tread Proxy. It displays a table with columns: DATE, LANE, VEHICLE, HINT, FRONT AXLE, REAR AXLE, and STATUS. The table lists several vehicles with their respective lane numbers, license plates, and tire wear measurements. The status column includes icons representing tire wear levels and air pressure.

DATE	LANE	VEHICLE	HINT	FRONT AXLE	REAR AXLE	STATUS
13:26:58	LANE-1	R FL 1637		> 8 3.3	4.2 > 8	
10:28:08	LANE-3	U QD 8948		> 8 5.2	4.9 5.2	
15:02:28	LANE-1	R DH 2803		5.0 > 8	7.1 > 8	
15:02:22	LANE-1	I BU 5201		2.8 2.6	5.9 > 8	
14:55:33	LANE-1	F JA 5264		4.7 4.0	5.9 > 8	
10:04:48	LANE-3	U AM 690		6.4 3.9	4.9 6.1	
10:02:36	LANE-1	G QP 1289		4.9 4.1	4.0 4.3	
10:01:26	LANE-2	P MA 5240		> 8 3.3	4.2 > 8	
09:35:27	LANE-2	B VS 5153		6.4 3.9	4.9 6.1	
09:34:57	LANE-1	J HE 4803		4.9 4.1	4.0 4.3	



## A digital workshop requires digital processes, and tire diagnosis is no exception.

Particularly with electric vehicles, high weight and torque cause enormous wear on tires and chassis components. With the automatic tire diagnosis of every vehicle entering the workshop, you not only keep the tire business in your workshop, but also create a basis for strong customer loyalty by ensuring more safety. The immediate evaluation of the tire wear image simultaneously generates service opportunities for wheel alignment and, if necessary, subsequent calibration of driver assistance systems.

The Connectivity Upgrade Kit allows you to seamlessly integrate any number of Easy Tread systems into your workshop network, giving you full control over vehicles

### Connectivity Upgrade Kit:

- Live view of all crossings of multiple Easy Treads in the same workshop
- 20% faster reading
- Connectivity via ASA interface
- Simplified connection to local workshop network
- New interface for easy integration into third party systems
- Direct connection of monitors and TVs without using the browser
- Search function for license plates
- Cumulative statistics across multiple Easy Tread installations

### Live Monitor:

The Live Monitor displays results such as license plate, tread depth, uneven tire wear, potential air pressure problems, as well as statistics from multiple Easy Tread installations. This can be accessed from any device with a web browser. As a result:

- Increase tire sales
- Increase wheel alignment and, if applicable, subsequent ADAS calibrations
- Optimize workshop processes
- Improve customer satisfaction & transparency
- Reduce walking distances and printing costs

### More data, more knowledge:

Workshop and tire chains take note! Cumulate Easy Tread measurement values even across multiple workshops! Collect crossing information from decentrally spread locations in one central place and increase efficiency in your workshops:

- Capacities & Performance Tracking
- Availability & management of tires
- Sending measurement reports to customers
- Online consulting of customers about further service measures

## Drive-over ramps kit | for onground installations

*4x drive-over ramps for onground installations*

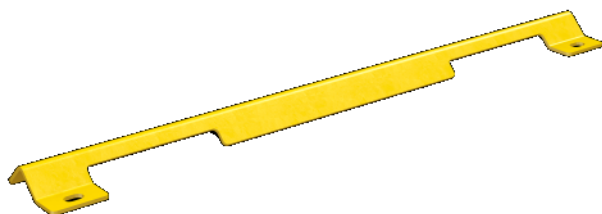
**Article number: 1691200042**



## Cable protection | for onground installations without Easy Cam

*Cable protection for onground installations without Easy Cam.*

**Article number: 1691202039**





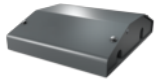
## Easy Tread - Accessories



**PC trolley for Easy Tread**  
Article number: 1691200023



**License plate recognition Easy Cam | Above ground**  
Article number: 1691200008



**Cable tunnel | for onground installations of Easy Tread**  
Article number: 1691201023



**Foundation frame for Easy Tread and VAS 741083 RDS**  
Article number: 1691200010



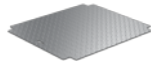
**Inground frame for Easy Tread and VAS 741083 RDS**  
Article number: 1691200028



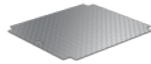
**License plate recognition Easy Cam | Inground**  
Article number: 1691200009



**License plate recognition Easy Cam | Inground +200mm**  
Article number: 1691200027



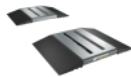
**Centre cover Easy Tread and VAS 741083 RDS**  
Article number: 1691202069



**Centre cover Easy Tread | Inground +200mm**  
Article number: 1691202095



**Easy Tread - Connectivity Kit**  
Article number: 1691200022



**Drive-over ramps kit | for onground installations**  
Article number: 1691200042



**Cable protection | for onground installations without Easy Cam**  
Article number: 1691202039

# IMPORTANT NOTES

- Please notice: This list contains spare parts, too.
- Without instruction or assembly.
- Delivery ex works including packaging.

## VERSION 2026.02.19 – PRICES ON REQUEST

- Starting from now all previous lists will lose their validity.
- Please read our general terms and conditions in the latest version before ordering; to be found under [www.beissbarth.com](http://www.beissbarth.com).

### Beissbarth Automotive Testing Solutions GmbH

Friedrichshafener Str. 602  
82205 Gilching, Germany  
[sales@beissbarth.com](mailto:sales@beissbarth.com)  
[www.beissbarth.com](http://www.beissbarth.com)

Telefon: +49-(0)89-14901-0  
Telefax: +49-(0)89-14901-246

**Order number** 1 693 602 008 **Print norm** BB XXX / XX.XX.2020 DE · Subject to technical and program changes, errors excepted.

