

Dialogannahme

# WHEEL BALANCERS

Version 2025.12.14 – Prices on request

## Wheel balancer G.30

Entry-level wheel balancer | mechanical clamping | automatic data arm | 17" touchscreen | Inside line laser | wheel guard with sonar for steel and alloy wheels

Article number: 1 692 501 001



### Precise balancing in tight spaces: Compact car wheel balancer

#### Measurement and balancing:

- Balancing in 4.7 seconds
- Automatic stop of the wheel 15° before correction position
- LED for better visibility when placing weights
- Internal line laser for precise positioning of weights
- Split program for hiding weights behind different spokes

#### Wheel data recognition:

- Automatic data arm for measuring distance and diameter and weight placement
- Automatic selection of clip-on and adhesive weight program
- Highest measurement accuracy +/- 0.5g

#### Auto Adaptive Mode:

- Dynamic tolerance adjustment based on weight and size
- Minimizes remaining imbalance to eliminate smallest vibrations noticeable by the driver

#### Wheel guard with integrated sonar:

- Automatic recognition of rim width in steel and aluminium rims
- Without manual input with measuring gauge
- Closing of wheel guard automatically starts balancing program

#### 17" touchscreen monitor:

- Graphical step-by-step illustrations
- Simplifies correct balancing with guided processes
- Touchscreen usable with gloves on

#### Quick clamping:

- Mechanical clamping with quick-lock nut
- Stable 40mm shaft
- Wheel weights up to 75kg
- Optional with wheel lift

#### Scope of delivery:

- 4 cones Ø43-112,5mm
- Quick-lock nut Pro Grip 40x4
- Clamping cap
- Pressure ring
- Rubber ring
- 60g counterweight
- Weight pliers



# Wheel balancer G.30P

Entry-level wheel balancer | pneumatic clamping | automatic data arm | 17" touchscreen | Inside line laser | wheel guard with sonar for steel and alloy wheels

Article number: 1 692 501 013



## Precise balancing in tight spaces: Compact car wheel balancer

### Measurement and balancing:

- Balancing in 4.7 seconds
- Automatic stop of the wheel 15° before correction position
- LED for better visibility when placing weights
- Internal line laser for precise positioning of weights
- Split program for hiding weights behind different spokes

### Wheel data recognition:

- Automatic data arm for measuring distance and diameter and weight placement
- Automatic selection of clip-on and adhesive weight program
- Highest measurement accuracy +/- 0.5g

### Auto Adaptive Mode:

- Dynamic tolerance adjustment based on weight and size
- Minimizes remaining imbalance to eliminate smallest vibrations noticeable by the driver

### Wheel guard with integrated sonar:

- Automatic recognition of rim width in steel and aluminium rims
- Without manual input with measuring gauge
- Closing of wheel guard automatically starts balancing program

### 17" touchscreen monitor:

- Graphical step-by-step illustrations
- Simplifies correct balancing with guided processes
- Touchscreen usable with gloves on

### Quick clamping:

- Pneumatic clamping with 250kg clamping force
- Ensures consistent clamping for all four wheels
- Stable 40mm shaft
- Wheel weights up to 75kg
- Optional with wheel lift

### Scope of delivery:

- 4 cones Ø43-112,5mm
- Quick-lock sleeve
- Pressure ring
- Rubber ring
- 60g counterweight
- Weight pliers

# Wheel balancer G.50 LCD

High-volume workshop wheel balancer | mechanical clamping | automatic data arm | LCD control panel | spot laser | wheel guard with sonar for steel and aluminum wheels | auto stop function | One Plane Balancing

Article number: 1 692 501 009



## Eliminates vibrations day-in day-out: Wheel balancer for intensive use

### Measurement and balancing

- Balancing in 4.7 seconds
- Automatic stop of the wheel in exact correction position
- LED for better visibility when placing weights
- Internal line laser for precise positioning of weights
- Split program for hiding weights behind different spokes

### Wheel data recognition

- Automatic data arm for measuring distance and diameter and weight placement
- Automatic selection of clip-on and adhesive weight program
- Highest measurement accuracy +/- 0.5g

### Auto Adaptive Mode

- Dynamic tolerance adjustment based on weight and size
- Minimizes remaining imbalance to eliminate smallest vibrations noticeable by the driver

### Wheel guard with integrated sonar

- Automatic recognition of rim width in steel and aluminium rims
- Without manual input with measuring gauge
- Closing of wheel guard automatically starts balancing program

### Robust LCD control panel:

- Easy operation
- Built workshop-tough
- Independent of user language

## Quick clamping

- Mechanical clamping with quick-lock nut
- Stable 40mm shaft
- Wheel weights up to 75kg
- Optional with wheel lift

## One Plane Balancing

- Eliminates dynamic imbalance with only one weight instead of two
- Fewer correction positions on the rim
- Less consumption of weights

## Scope of delivery

- 4 cones Ø43-112,5mm
- Quick-lock nut Pro Grip 40x4
- Clamping cap
- Pressure ring
- Rubber ring
- 60g counterweight
- Weight pliers

Please note: an upgrade with runout sonar is only possible for G.50 balancers with Touch monitor.

## Wheel balancer G.50

High-volume workshop wheel balancer | mechanical clamping | automatic data arm | 19" touchscreen | spot laser | wheel guard with sonar for steel and aluminum wheels | auto stop function | One Plane Balancing

Article number: 1 692 501 002



### Eliminates vibrations day-in day-out: Wheel balancer for intensive use

#### Measurement and balancing

- Balancing in 4.7 seconds
- Automatic stop of the wheel in exact correction position
- LED for better visibility when placing weights
- Internal line laser for precise positioning of weights
- Split program for hiding weights behind different spokes

#### Wheel data recognition

- Automatic data arm for measuring distance and diameter and weight placement
- Automatic selection of clip-on and adhesive weight program
- Highest measurement accuracy +/- 0.5g

#### Auto Adaptive Mode

- Dynamic tolerance adjustment based on weight and size
- Minimizes remaining imbalance to eliminate smallest vibrations noticeable by the driver

#### Wheel guard with integrated sonar

- Automatic recognition of rim width in steel and aluminium rims
- Without manual input with measuring gauge
- Closing of wheel guard automatically starts balancing program

#### 19" touchscreen monitor

- Graphical step-by-step illustrations
- Simplifies correct balancing with guided processes
- Touchscreen usable with gloves on

### Quick clamping

- Mechanical clamping with quick-lock nut
- Stable 40mm shaft
- Wheel weights up to 75kg
- Optional with wheel lift

### One Plane Balancing

- Eliminates dynamic imbalance with only one weight instead of two
- Fewer correction positions on the rim
- Less consumption of weights

Upgrade to Pro version (optional): Upgradable with sonar for runout measurement and Hubmatch function.

### Scope of delivery

- 4 cones Ø43-112,5mm
- Quick-lock nut Pro Grip 40x4
- Clamping cap
- Pressure ring
- Rubber ring
- 60g counterweight
- Weight pliers

# Wheel balancer G.50P

High-volume workshop wheel balancer | pneumatic clamping | automatic data arm | 19" touchscreen | spot laser | wheel guard with sonar for steel and aluminum wheels | auto stop function | One Plane Balancing

Article number: 1 692 501 003



## Eliminates vibrations day-in day-out: Wheel balancer for intensive use

### Measurement and balancing

- Balancing in 4.7 seconds
- Automatic stop of the wheel in exact correction position
- LED for better visibility when placing weights
- Internal line laser for precise positioning of weights
- Split program for hiding weights behind different spokes

### Wheel data recognition

- Automatic data arm for measuring distance and diameter and weight placement
- Automatic selection of clip-on and adhesive weight program
- Highest measurement accuracy +/- 0.5g

### Auto Adaptive Mode

- Dynamic tolerance adjustment based on weight and size
- Minimizes remaining imbalance to eliminate smallest vibrations noticeable by the driver

### Wheel guard with integrated sonar

- Automatic recognition of rim width in steel and aluminium rims
- Without manual input with measuring gauge
- Closing of wheel guard automatically starts balancing program

### 19" touchscreen monitor

- Graphical step-by-step illustrations
- Simplifies correct balancing with guided processes
- Touchscreen usable with gloves on

## Secure pneumatic clamping

- Pneumatic clamping with 250kg clamping force
- Ensures consistent clamping for all four wheels
- Wheel weights up to 75kg
- Optional with wheel lift

## One Plane Balancing

- Eliminates dynamic imbalance with only one weight instead of two
- Fewer correction positions on the rim
- Less consumption of weights

Upgrade to Pro version (optional): Upgradable with sonar for runout measurement and Hubmatch function.

## Scope of delivery

- 4 cones Ø43-112,5mm
- Pneumatic quick-lock sleeve
- Clamping cap for aluminum rims
- Pressure ring
- Rubber ring
- 60g counterweight
- Weight pliers

## Rim width measurement arm Electronic | for MT 826 D

Article number: 1 695 600 598



## External arm kit for measuring rim width | for MT 837 L / 857 L

Article number: 1 695 656 936





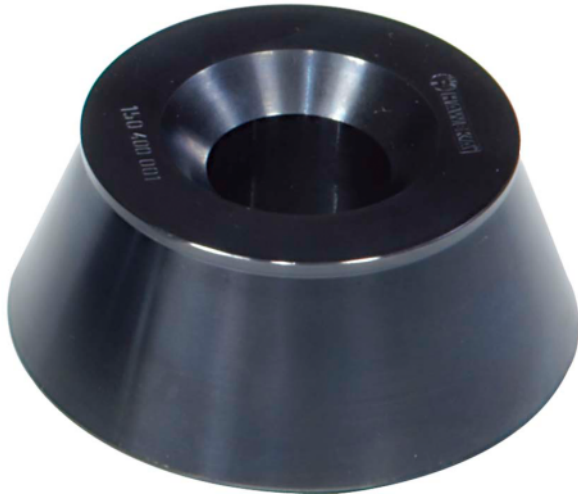
## Sonar arm kit for MT 837 L / 857 L

Article number: 1 695 656 935



## Centering cone | 4x4 | Ø95 - 132mm

Article number: 1 695 653 449



Center hole diameter: 95-132mm  
Clamping type: Manual / Pneumatic  
For wheel type: Passenger cars / Light trucks  
Required for: Clamping via the center hole of the rim  
Application: Wheels should be clamped with the cone from the inside.  
Use in conjunction with: Used in conjunction with: stand-alone, optionally with Universal Spacer Ring (1695901667) for off-road rims or rims with high offset to prevent contact with the wheel balancer housing.  
Quantity: 1  
Required quantity per wheel: 1  
Not suitable for: Rims without center hole

## Centering Cone | Light Truck | Ø122 - 174mm

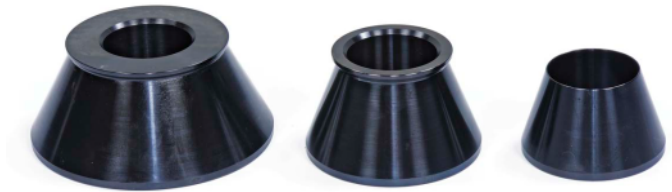
Article number: 1 695 606 300



Center hole diameter: 122-174mm  
Clamping type: Manual / Pneumatic  
For wheel type: Light trucks  
Required for: Clamping via the center hole of the rim. Double-sided cone with 120-150mm and 147-174mm.  
Application: Wheels should be clamped with the cone from the outside.  
Use in conjunction with: Spacer disc 1695600061. The space disc is mounted on the inside of the rim to accommodate wheels with larger center bore.  
Quantity: 1  
Number required per wheel: 1  
Not suitable for: Rims without center hole

## Centering cone set $\varnothing$ 42 - 111.5 mm | 3 pcs.

Article number: 1 695 654 851



## Centering cone set $\varnothing$ 42 - 110 mm | 4 pcs.

Article number: 1 695 655 293





## Centering Cone Set Light Trucks | Ø95 - 174mm | 3 pcs.

Article number: 1 695 654 849



Center hole diameter: 95-174mm  
Clamping type: Manual / Pneumatic  
For wheel type: Light trucks  
Required for: Clamping via the center hole of the rim  
Application: Rims with a center bore of up to 132 mm can be clamped from the inside using the centering cone 1695653449. For rims with a larger center bore, the spacer disc 1695600061 is required to increase the flange hub diameter. In this case, the centering cone 1695606300 is then used to clamp the rim from the outside.  
Quantity: 1  
Required quantity per wheel: 1  
Not suitable for: Rims without center hole

Scope of delivery:

- Centering cone 122 - 174mm (1695606300)
- Centering one 95 - 132mm (1695653449)
- Spacer disc (1695600061)

## Spacer Disc | Light Trucks

Article number: 1 695 600 061



Clamping type: Manual / Pneumatic  
For wheel type: Light trucks  
Required for: Mounting of wheels with a center bore larger than the diameter of the flange hub. Inner diameter = 180mm, outer diameter = 220mm  
Application: The spacer disc is mounted on the balancer shaft in front of the wheel. The spacer disc is guided on the balancer shaft with its 40 mm center bore. Used in conjunction with: Centering cone 1695606300, which is mounted on the wheel from the outside.  
Quantity: 1  
Required quantity per wheel: 1  
Not suitable for: Rims without center hole

## Replacement Sleeve | for Universal Distance Spacer

for use with universal distance spacer 1695901667

**Article number: 1 695 654 895**



Clamping type: Manual / Pneumatic  
For wheel types: Passenger cars/light trucks  
Required for: Compensate offset from universal spacer ring  
Application: The spacer sleeve is mounted on the balancer shaft before the cone and the wheel. Use in conjunction with: Universal Spacer Ring (1695901667)  
Quantity: 1  
Number required per wheel: 1  
Not suitable for: Rims without center hole  
Scope of delivery: 1x polyamide spacer sleeve L=35mm

## Universal Spacer Ring | Spacer Ring + Sleeve

Article number: 1 695 901 667



Clamping type: Manual / Pneumatic  
For wheel types: Passenger cars/light trucks  
Required for: widening the flange hub for off-road rims or rims with a high offset (ET) to prevent contact with the housing of the wheel balancer.  
Application: The spacer ring is attached to the flange hub with three magnetic pins. The spacer sleeve is mounted on the balancer shaft before the cone and the wheel.  
Quantity: 1  
Required quantity per wheel: 1  
Not suitable for: Rims without center hole

Scope of delivery:

- 1x Spacer ring L=36mm with magnets
- 1x Polyamide spacer sleeve L=35mm (1695654895)

## Universal flange Passenger car | for closed 3-, 4-, 5-hole rims

*Infinitely variable adjustment | et al for Renault, Peugeot, Citroën | incl. 3 centering rings*

**Article number: 1 695 654 043**





## Clamping Hood Large | Ø220mm

Article number: 1 695 653 888



Clamping type: Manual  
For wheel types: Passenger cars / light trucks  
Required for: Aluminum rims  
Application: Clamping hood is clicked into the ProGrip wing nut and clamped against the rim from the outside.  
Use in conjunction with: ProGrip quick-release wing nut (1692502195)  
Quantity: 1  
Required quantity per wheel: 1  
Scope of delivery: 1x large clamping hood Ø 220mm

## Rubber cup for clamping hood large diameter

Article number: 1 695 624 800



## Special centering kit for BMW

PCD 4 x 100 | 5 x 120 | 5 x 112 / 120 mm

Article number: 1 695 656 822



# Centering sleeve for VW/Mercedes | 65/66,5/84 mm

Article number: 1 695 000 073

## Centering cone i.e. Renault / Dacia | 50 - 60 / 66 / 71 mm

Article number: 1 695 656 571





## DuoExpert | Precision Collet | Set | Ø54-78mm

Article number: 1 695 656 698



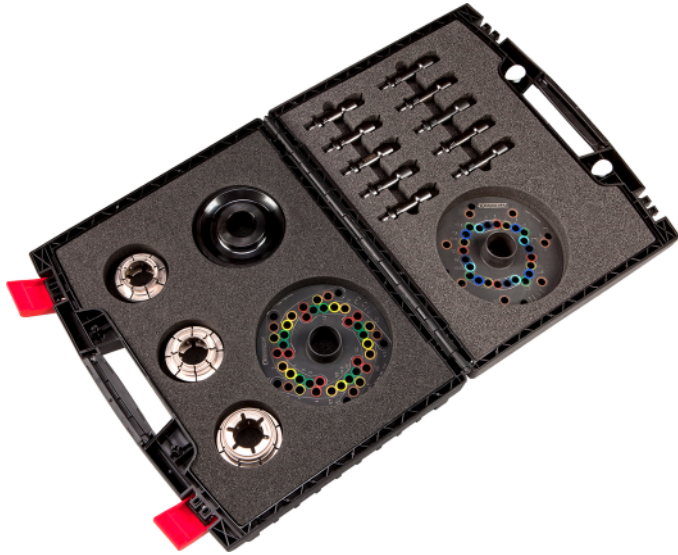
Center hole diameter: 54-78mm  
Clamping type: Manual / Pneumatic  
For wheel type: Passenger cars  
Required for: Clamping via the center hole of the rim. Covers approx. 95% of common passenger cars  
Application: Wheels should be clamped with the cone from the inside.  
Use in conjunction with: Stand-alone (optimal results with type plate or Quick plate)  
Quantity: 1  
Required quantity per wheel: 1  
Not suitable for: Rims without center hole

Scope of delivery:

- Collet 1: 54-62mm
- Collet 2: 62-70mm
- Collet 3: 70-78mm
- Transport case

## Flange case Kit Duo Expert | for passenger cars | with pressure plates

Article number: 1 695 656 570



## Centering Bolt for Type Plates | 100mm | Spring-loaded | Long Taper | Ø 24,5mm

**Article number: 1 695 656 834**

Clamping type: Manual / Pneumatic  
For wheel types: BMW OEM rims  
Required for: Clamping the wheel from the outside via the wheel bolt holes  
Application: Wheels are clamped centrally from the outside using a BMW type plate via the wheel bolt holes.  
Only compatible with Type Plates with Ø 12mm holes.  
Use in conjunction with:

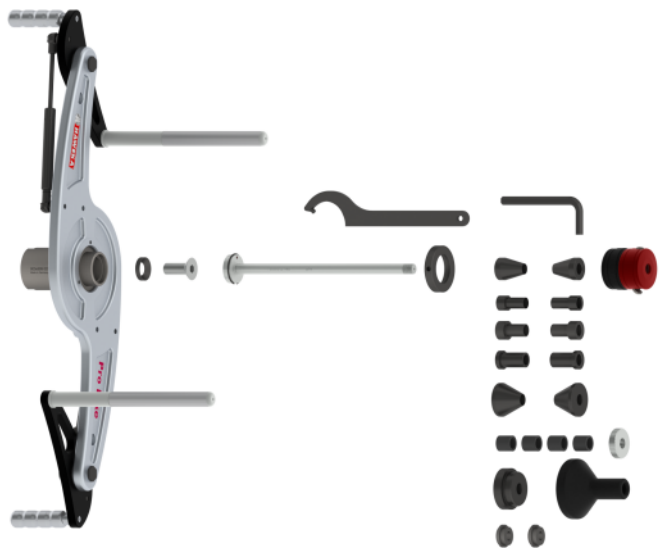
- Type Plate | BMW | 4x100 / 5x120 (1695654927)
- Type Plate | BMW | 5x112 / 5x120 (1695600215)
- Type Plate | BMW | 5x120 / 5x132 (1692502248)

Quantity: 1  
Number required per wheel: 4 or 5, depending on PCD of rim  
Scope of delivery: 1x Centering bolt, L=100mm, spring-loaded, long taper, Ø 24.5mm

## Wheel centering kit for motorbikes | Conical | Basic | Ø 14 mm

*Only compatible with Zero6/8 and MT series. Not compatible with G-series!*

**Article number: 1 695 000 542**



## Centering kit for BMW

Article number: 1 695 000 259





## Quick clamping unit Quick-Fix | for motorbikes | Ø 14 mm

Article number: 1 695 654 117



## Wheel Lift | AirGo

Article number: 1 695 601 012



Required for: Lifting and lowering the wheel in conjunction with a wheel balancer  
Application: Lifting and lowering the wheel via integrated rotating handle. Lift lowers automatically when letting go of the rotating handle.  
Compatible with: all Beissbarth wheel balancers

### Specifications:

- Air supply: 6-8bar
- Operating pressure: 7bar
- Max. lifting height: 480mm
- Max horizontal travel: 720mm
- Max. wheel weight: 70kg
- Max. wheel diameter: 36"
- Weight: 35kg
- Length x width: 1149 x 549mm
- Height (fully lowered): 115mm

Scope of delivery: 1x Wheel lift

## Three arm flange for light trucks | incl. nuts and bolts

Article number: 1 695 653 420



## Motorcycle Adapter | for BA 201

Article number: 1 695 600 479



## Universal Adapter for BA 201

*Used for clamping rims without a center hole*

**Article number: 1 695 600 480**



## Universal Adapter for BA 201

*Used for clamping rims without a center hole mostly found in French cars*

**Article number: 1 695 600 481**



## Printer | for MT Zero 6 & 8

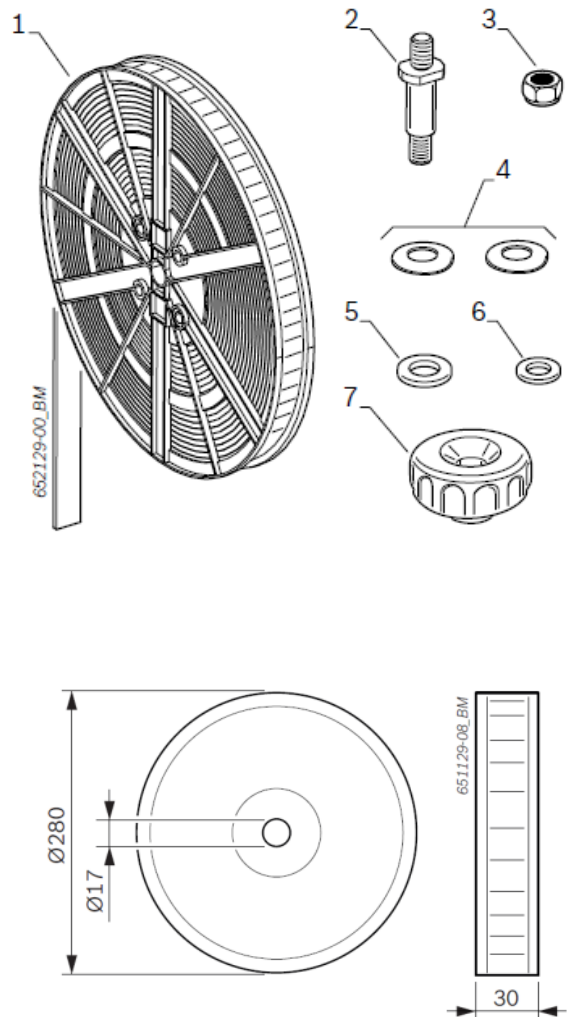
Article number: 1 695 042 875





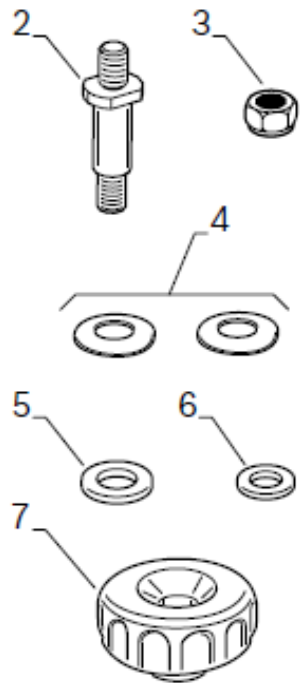
# Holder for adhesive balance weight spool + adhesive balance weight spool | for MT Zero 6 & 8

Article number: 1 695 656 872



## Holder for adhesive balance weight spool | MT Zero 6 & 8

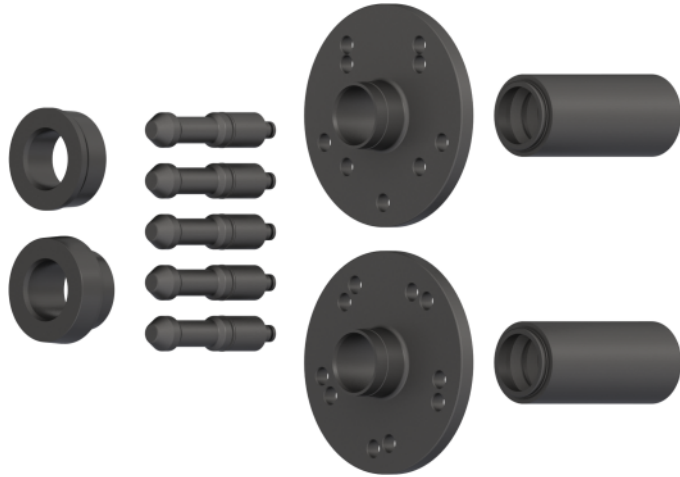
Article number: 1 695 656 877



## Wheel centering kit for special pneumatic flange for BMW | MT Zero 6 & 8 Pneumatic

1x Centering sleeve  $\varnothing 66,5\text{mm}$ , 1x Centering sleeve  $\varnothing 56-57/72,5-74\text{mm}$ , 5x Centering bolt, spring-loaded, 100mm long, long taper, 1x Flange plate adaptor 4x100/5x120, 1x Flange plate adaptor 5x112/120, 2x Pressure piece pneumatic  $\varnothing 40$ ,

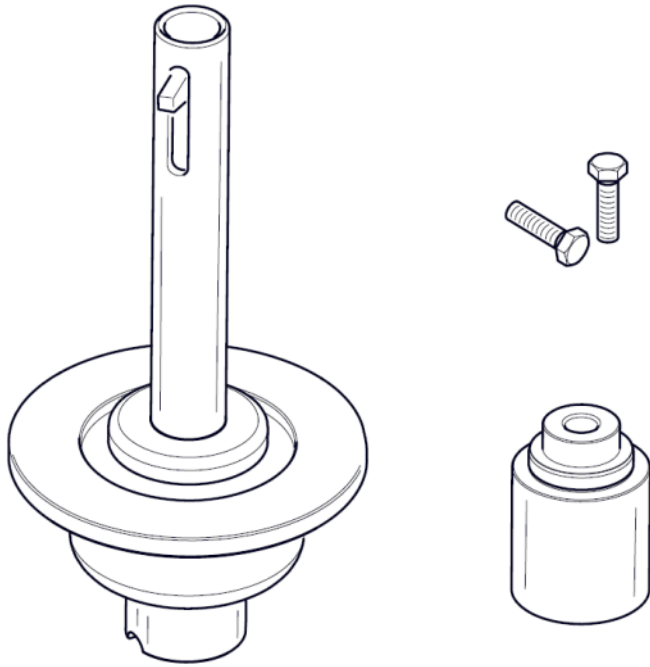
**Article number: 1 695 657 004**



- 1x Centering sleeve  $\varnothing 66,5\text{mm}$
- 1x Centering sleeve  $\varnothing 56-57/72,5-74\text{mm}$
- 5x Centering bolt, spring-loaded, 100mm long, long taper
- 1x Flange plate adaptor 4x100/5x120
- 1x Flange plate adaptor 5x112/120
- 2x Pressure piece pneumatic  $\varnothing 40$

## Special pneumatic flange for BMW | MT Zero 6 & 8 Pneumatisch

Article number: 1 695 657 006



## Clamp for counter-weights

Article number: 1 695 606 500



## Width gauge

Article number: 1 695 602 700



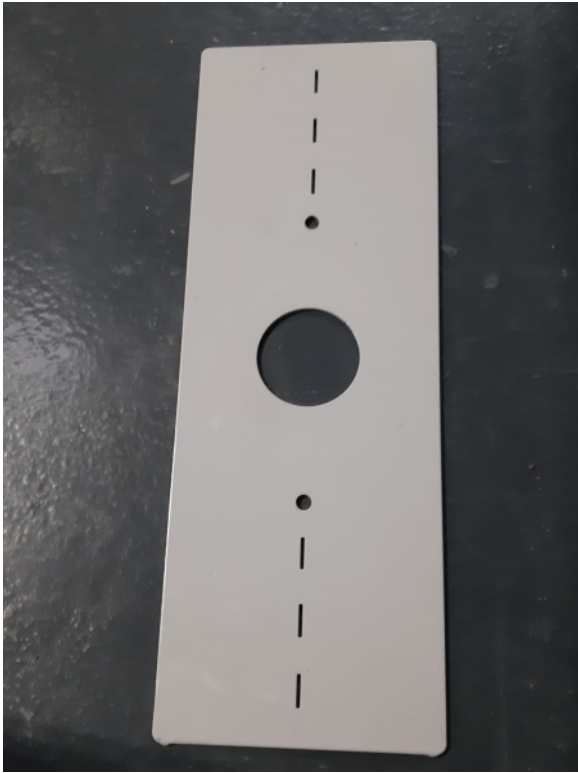
# Weight position sensor

Article number: 1 695 629 400



## Calibration plate | MT837/MT857

Article number: 1 695 600 938





## Positioning laser with light ring | MTZero6

Article number: 1 695 654 994



# Floor mounting parts set | MTZero6 | MTZero6

Article number: 1 695 655 582

## Calibrating pin | MTZero6

Article number: 1 695 656 719



## Quick-release coupling – MT ZERO 6 Touch AWxP | MTZero6/MTZero8 | MTZero6/MTZero8

Article number: 1 695 042 398



## Cone holder | MTZero6/MTZero8

Article number: 1 695 627 500



# Large flange | Start Line

Article number: 1 695 600 672

# Small cone | Start Line

Article number: 1 695 600 673

## Cone 2 | Start Line

Article number: 1 695 600 674



# Cone 3 | Start Line

Article number: 1 695 600 675

# Cone 4 | Start Line

Article number: 1 695 600 676

# Spacer plate, large | Start Line

Article number: 1 695 600 678

# Quick-action clamping nut | Start Line

Article number: 1 695 600 442

# Wrench, waf 12 | Start Line

Article number: 1 695 600 665

# Balance weight pliers | Start Line

Article number: 1 695 600 670

# Spring | Start Line

Article number: 1 695 600 677

# Weights 100 g | Start Line

Article number: 1 695 600 668



# Measuring compass | Start Line

Article number: 1 695 600 671

# Adhesive weights remover | Start Line

Article number: 1 695 600 667

# Calibrating pin | MTZero6/MTZero8

Article number: 1 695 655 496

# Accessories support | MT826 | MT826

Article number: 1 695 654 167

# Mounting plate for monitor | MT826 | MT826

Article number: 1 695 905 164

## Type Plate | BMW | 5x112 / 5x120mm

**Article number: 1 695 600 215**

Clamping type: Manual / Pneumatic  
For wheel types: BMW OEM rims with bolt circle 5x112 and 5x120  
Required for: Clamping the wheel from the outside via the wheel bolt holes  
Application:  
Wheels are clamped and centered from the outside using a BMW type plate via the wheel bolt holes.  
Use in conjunction with:

- Centering bolts, L=100mm, spring-loaded, long taper Ø 24.5mm (1695656834)
- Pneumatic sleeve with thread (1692502209)
- ProGrip quick release wing nut with thread (1692502195)

Quantity: 1  
Number required per wheel: 1

Scope of delivery: 1x Type plate 5x112 / 5x120

# Truck flange Standard | with cones for outside clamping

Article number: 1 695 654 929

# Truck flange Precision | with 4- and 5-arm centring system

Article number: 1 695 654 928

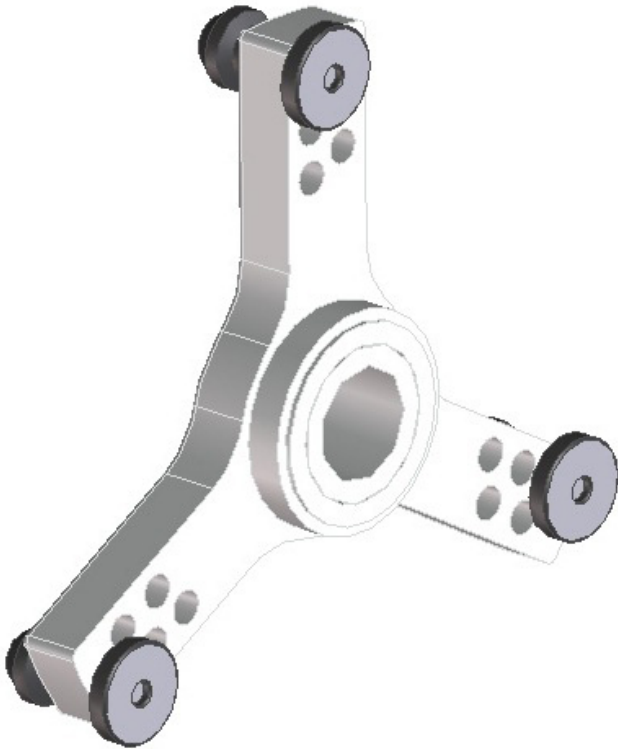


# Quick lock-nut | MT795

Article number: 1 695 616 200

## 3-arm star adapter SR3 | for light trucks | Ø 161 / 170 / 184.15 / 205 / 222.25 / 245 mm

Article number: 1 692 502 038

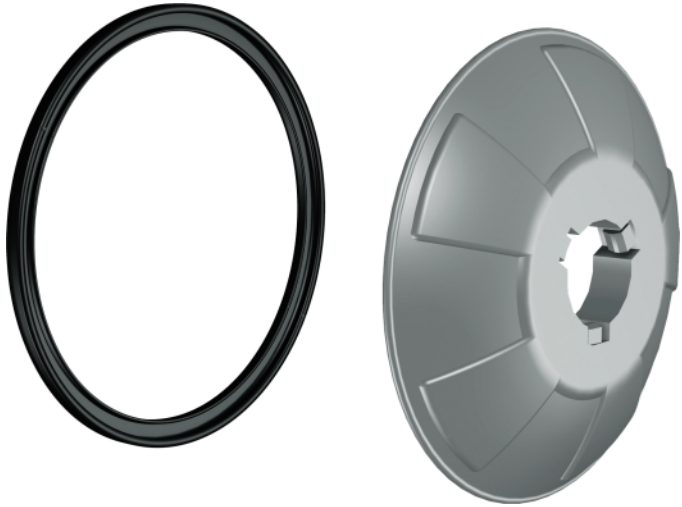


- 3-arm star adapter for light truck wheels with Ø 161 / 170 / 184.15 / 205 / 222.25 / 245 mm

## Large clamping cap | for aluminium rims

*Large plastic cap with Polyurethane ring to protect aluminium rims.*

**Article number: 1 692 502 044**



## Distance ring 40mm | in combination with light truck cone 1692502047

Article number: 1 692 502 028



To be used in combination with light truck cone 1692502047 and spacer 1692502031. 40mm distance ring 1692502028 and spacer 1692502031 are mounted on the inside. The light truck cone is used to lock the wheel from the outside. Spacer can be mounted either way, as long as it fits the inside rim shape.

## Cone | for German OEMs | Ø 56.5 / 57 / 66.5 / 70 - 72.5 mm

Article number: 1 692 502 049

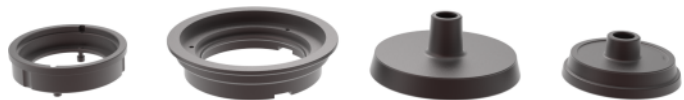


- Stepped cone for German OEMs Ø 56.5 / 57 / 66.5 / 70 - 72.5 mm

## Cones and clamping kit Truck | $\varnothing$ 202 / 221 / 281 mm

*For centering truck and bus wheels with a central hole of  $\varnothing$  202 / 221 / 281 mm | set consisting of two truck cones, 40mm distance ring, and spacer*

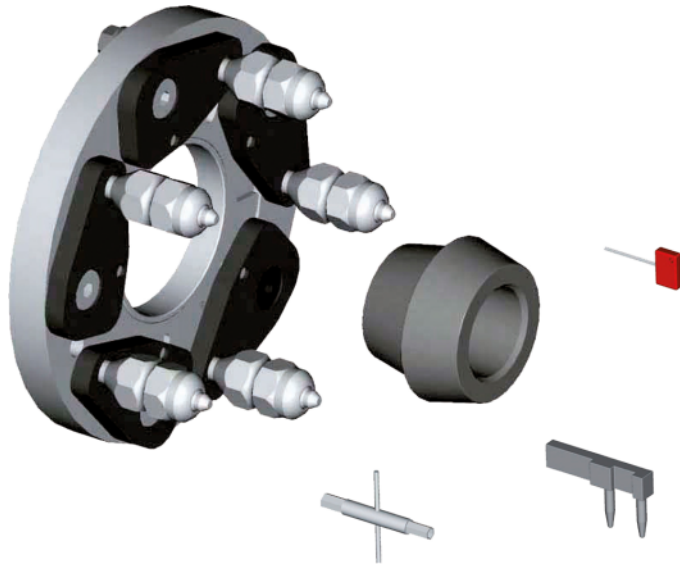
**Article number: 1 692 502 025**



## Universal 3-4-5-6-hole adapter | $\varnothing$ 95 - 120 mm

Universal adapter for all wheels with 3, 4, 5, and 6 holes (bolt circle  $\varnothing$  95-120 mm).

**Article number: 1 692 502 037**



- Includes double centering cone
- For wheels with/without center hole (Renault, Peugeot, and Citroën)
- Reduces clamping errors to a minimum

## Centering kit 4-arm and 5-arm star | for truck

For centering wheels with 8 holes on  $\varnothing$  275 / 285.75 mm and 10 holes on  $\varnothing$  225 / 285.75 / 335 mm | set consisting of 5 - arm and 4 - arm stars, centering adapter, stud bolts and screws

**Article number: 1 692 502 026**

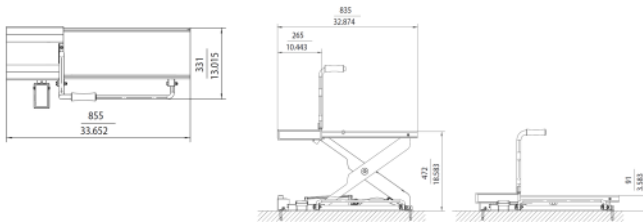




## Wheel Lift | G.Zero | with memory function

Pneumatic wheel lift with memory function

Article number: 1 692 502 000



### Zero Gravity - The Wheel Lift for Professionals

#### Make Balancing Easier:

- Pneumatic lifting and lowering of wheels up to 80kg
- Automatic lowering of lift upon closing the wheel guard
- Weightless: Automatic weight compensation for easy and secure clamping
- Memory function: Automatically adjusts to the correct height for the next wheels
- Faster than comparable solutions
- Effortlessly adjustable in height and sideways.
- Low height for easy rolling of heavy tires onto the lift

#### Specifications:

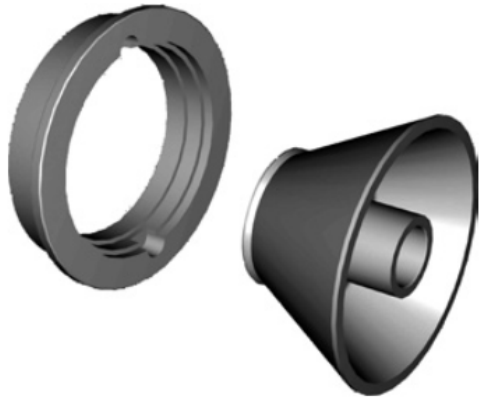
- Power supply: 230V | 50-60Hz
- Max absorbed power: 0.04kW
- Air supply: 7.5-12bar
- Operating pressure: 7.5bar
- Max. lift height: 472mm
- Max. wheel weight: 80kg
- Weight: 40kg
- Length x width: 855 x 331mm
- Height (fully lowered): 91mm

Compatible with: All Beissbarth wheel balancers. The automatic lowering function when closing the wheel guard requires, in addition to the pneumatic connection, an electronic connection to the wheel balancer. This is only possible with G-Series balancers. When using the wheel lift with older models, raising and lowering is operated via the pedal. Scope of delivery: 1x Wheel lift

## Light truck cone with 36mm distance ring | for light truck wheels with center hole $\varnothing$ 97-170mm

*Kit for light truck wheels with center hole  $\varnothing$  97-170mm*

**Article number: 1 692 502 046**



## Eccentricity Diagnostic Upgrade | for G.50 with touch monitor

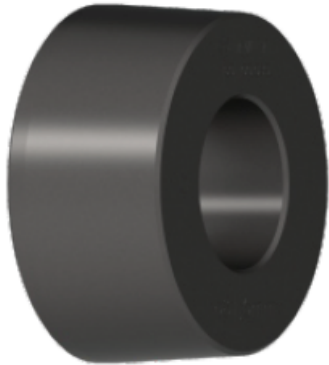
*Diagnostic Upgrade of the G.50 wheel balancer with a rear sonar to enable eccentricity measurements. This advanced feature determines the roundness of the wheel assembly when rotating. Additionally, the newly unlocked Hubmatching feature allows rotating the tyre on the rim to minimize total imbalance before applying correction weights.*

**Article number: 1 692 502 165**



## Precision Collet | BMW special purpose vehicles | Ø80 – 83,7 / 81,5mm

Article number: 1 692 500 217



Center hole diameter: 80-83.7 / 81.5mm  
Clamping type: Manual / Pneumatic  
For wheel type: BMW OEM  
Required for: Clamping via the center hole of the rim  
Application: Wheels should be clamped with the collet from the inside.  
Use in conjunction with: Stand-alone (ideally with BMW-specific type plate)  
Quantity: 1  
Required quantity per wheel: 1  
Not suitable for: Rims without center hole

## Wheel balancer G.90 HD Pro | Diagnostic

Truck wheel balancing machine with diagnostic function | Mechanical clamping | Automatic measuring arm | 19" touchscreen | Inner line laser | Wheel guard with sonar for steel and aluminum wheels | Height-adjustable flange | Height deviation sonar | Hub matching

Article number: 1 692 501 006



### Diagnostic wheel balancing machine for buses and trucks with height-adjustable flange

#### Height-adjustable flange:

- Easy clamping with the wheel on the ground instead of mid-air
- No separate wheel lift required
- Slide with only 59mm build height enables easier lateral movement

#### Measurement and balancing:

- Balancing of truck wheels in 8 seconds
- Wheel stopping in exact position via electromagnetic brake
- LED for enhanced visibility when placing weights
- Inner line laser for precise weight positioning
- Split program for dividing and hidden attachment of weights behind the spokes

#### Detection of wheel data:

- Automatic measuring arm for distance and diameter measurement and weight placement
- Extended measuring arm up to 32" rim diameter
- Automatic selection of clip-on or adhesive weight program
- Highest measurement accuracy +/- 0.5g

#### Wheel guard with integrated sonar:

- Automatic detection of wheel width for steel and aluminum wheels
- No manual input required with measuring gauge
- Balancing program starts automatically upon closing the wheel guard

#### 19" touchscreen monitor:

- Graphical representation of all processes
- Simplifies correct balancing with guided workflows
- Operable even with gloves

#### Quick clamping:

- Mechanical clamping with quick clamping nut
- Stable 40mm shaft
- Handles wheel weights up to 200kg

#### Pro version with diagnostic function:

- Automatic runout measurement during each balancing operation
- Hub matching: eliminates vibrations by rotating the tire on the wheel
- Eliminates even the finest vibrations without the need for expensive load rollers

#### Included in the delivery:

- Quick lock ring
- Clamping cap
- Pressure ring
- 4-arm and 5-arm centering kit 1692502026
- 300g counterweight
- Weight pliers
- Measuring gauge

## Wheel balancer G.20 LCD

Entry-level wheel balancer | mechanical clamping | automatic data arm | LCD control panel | Inside line laser | wheel guard with virtual sonar for steel rims

Article number: 1 692 501 007



### Precise balancing in tight spaces: Compact car wheel balancer

#### Measurement and balancing:

- Balancing in 4.7 seconds
- Automatic stop of the wheel 15° before correction position
- LED for better visibility when placing weights
- Internal line laser for precise positioning of weights
- Split program for hiding weights behind different spokes

#### Wheel data recognition:

- Automatic data arm for measuring distance and diameter and weight placement
- Automatic selection of clip-on and adhesive weight program
- Highest measurement accuracy +/- 0.5g

#### Auto Adaptive Mode:

- Dynamic tolerance adjustment based on weight and size
- Minimizes remaining imbalance to eliminate smallest vibrations noticeable by the driver

#### Wheel guard with virtual sonar:

- Automatic recognition of rim width in steel rims
- Without manual input with measuring gauge or sonar
- Closing of wheel guard automatically starts balancing program

#### Robust LCD control panel:

- Easy operation
- Built workshop-tough
- Independent of user language

#### Quick clamping:

- Mechanical clamping with quick-lock nut
- Stable 40mm shaft
- Wheel weights up to 75kg
- Optional with wheel lift

#### Scope of delivery:

- 4 cones Ø43-112,5mm
- Quick-lock nut Pro Grip 40x4
- Clamping cap
- Pressure ring
- Rubber ring
- 60g counterweight
- Weight pliers

## Wheel balancer G.20

Entry-level wheel balancer | mechanical clamping | automatic data arm | 17" touchscreen | Inside line laser | wheel guard with virtual sonar for steel rims

Article number: 1 692 501 000



### Precise balancing in tight spaces: Compact car wheel balancer

#### Measurement and balancing:

- Balancing in 4.7 seconds
- Automatic stop of the wheel 15° before correction position
- LED for better visibility when placing weights
- Internal line laser for precise positioning of weights
- Split program for hiding weights behind different spokes

#### Wheel data recognition:

- Automatic data arm for measuring distance and diameter and weight placement
- Automatic selection of clip-on and adhesive weight program
- Highest measurement accuracy +/- 0.5g

#### Auto Adaptive Mode:

- Dynamic tolerance adjustment based on weight and size
- Minimizes remaining imbalance to eliminate smallest vibrations noticeable by the driver

#### Wheel guard with virtual sonar:

- Automatic recognition of rim width in steel rims
- Without manual input with measuring gauge or sonar
- Closing of wheel guard automatically starts balancing program

#### 17" touchscreen monitor:

- Graphical step-by-step illustrations
- Simplifies correct balancing with guided processes
- Touchscreen usable with gloves on

#### Quick clamping:

- Mechanical clamping with quick-lock nut
- Stable 40mm shaft
- Wheel weights up to 75kg
- Optional with wheel lift

#### Scope of delivery:

- 4 cones Ø43-112,5mm
- Quick-lock nut ProGrip 40x4
- Clamping cap
- Pressure ring
- Rubber ring
- 60g counterweight
- Weight pliers

## Wheel balancer G.60P Pro | Diagnostic

Diagnostic wheel balancer for professionals | pneumatic clamping system | automatic wheel recognition | 19" touchscreen | 3D laser scanner + outer line laser | wheel guard with sonar for steel and aluminum wheels | auto stop function | One-Plane Balancing | runout sonar | Hubmatching

Article number: 1 692 501 004



### Diagnosis wheel balancer for passenger cars, designed by professionals for professionals, with fully automatic wheel detection:

#### Measuring and Balancing

- Balancing in 4.7 seconds
- Stops wheel automatically in exact correction position
- LED for increased visibility when placing weights
- Internal laser point for precise weight positioning
- External line laser for clip-on weights
- Split program for hiding weights behind spokes

#### 3D Laser Scanner

- Contactless measurement of distance, rim width, and rim diameter
- Optimized for black and glossy rims
- No data arm or measuring gauge, everything fully automatic

#### Wheel Data Detection

- Fully automatic wheel data detection
- Automatic selection of clip-on and adhesive weights program
- Highest measurement accuracy of +/- 0.5g
- Balancing program starts automatically when closing the wheel guard

#### Auto Adaptive Mode

- Dynamic tolerance adjustment based on weight and size
- Minimizes remaining imbalance to eliminate smallest vibrations noticeable by the driver

#### Wheel guard with integrated sonar

- Automatic recognition of rim width in steel and aluminium rims
- Without manual input with measuring gauge
- Closing of wheel guard automatically starts balancing program

#### 19" touchscreen monitor

- Graphical step-by-step illustrations
- Simplifies correct balancing with guided processes
- Touchscreen usable with gloves on

#### Secure pneumatic clamping

- Pneumatic clamping with 250kg clamping force
- Ensures consistent clamping for all four wheels
- Wheel weights up to 75kg
- Optional with wheel lift

#### One Plane Balancing

- Eliminates dynamic imbalance with only one weight instead of two
- Fewer correction positions on the rim
- Less consumption of weights

#### Pro Version with diagnostic function

- Automatic height deviation measurement with every balancing operation (4.7 seconds)
- Hubmatch: eliminates vibrations by rotating the tire on the wheel
- Eliminates even the slightest vibrations without the need for an expensive roller

#### Lieferumfang

- 4 cones Ø43-112 5mm



## Standard Service

---



**Wheel balancer G.20 LCD**  
Article number: 1 692 501 007



**Wheel balancer G.20**  
Article number: 1 692 501 000



**Wheel balancer G.50**  
Article number: 1 692 501 002



**Wheel balancer G.50P**  
Article number: 1 692 501 003

## High Volume

---



**Wheel balancer G.30**  
Article number: 1 692 501 001



**Wheel balancer G.30P**  
Article number: 1 692 501 013



**Wheel balancer G.50 LCD**  
Article number: 1 692 501 009

## Premium Service

---



**Wheel balancer G.60P Pro | Diagnostic**  
Article number: 1 692 501 004

## Truck

---



**Wheel balancer G.90 HD Pro | Diagnostic**  
Article number: 1 692 501 006

# IMPORTANT NOTES

- Please notice: This list contains spare parts, too.
- Without instruction or assembly.
- Delivery ex works including packaging.

## VERSION 2025.12.14 – PRICES ON REQUEST

- Starting from now all previous lists will lose their validity.
- Please read our general terms and conditions in the latest version before ordering; to be found under [www.beissbarth.com](http://www.beissbarth.com).

**Order number** 1 693 602 008 **Print norm** BB XXX / XX.XX.2020 DE · Subject to technical and program changes, errors excepted.

### Beissbarth Automotive Testing Solutions GmbH

Friedrichshafener Str. 602  
82205 Gilching, Germany  
[sales@beissbarth.com](mailto:sales@beissbarth.com)  
[www.beissbarth.com](http://www.beissbarth.com)

Telefon: +49-(0)89-14901-0  
Telefax: +49-(0)89-14901-246

