

Dialogannahme

TRUCK BRAKE TESTING

Version 2025.12.13 – Prices on request

Truck Brake Tester BD 6000 | 16t | 1000mm | 8-point scale

Article number: 1 691 810 111



BD 6000: Robust mechanics, maximum reliability

Truck brake tester for premium demands

- For trucks up to 16t axle load
- Completely hot-dip galvanized
- Electromagnetic motor brake
- Quartz-coated premium rollers with 1000mm length

Fully equipped without compromise

- 8-point scale for measuring axle weight and deceleration
- 2 rotation speeds
- 4x4 automatic all-wheel drive detection
- ASA live stream
- Speed sensor
- 50 mm roller elevation for more precise and safer testing
- Including ICperform software
- Including ICperform tablet app

Display options: analog, digital or mobile

- Analog: Classic visualization on an analog display
- Digital: Full control with ICperform software on your PC
- Mobile: Measurement values directly on the tablet in the driver's seat

ICperform software – analog is so yesterday

- Additional measurement variables such as axle weight, brake force difference, minimum braking, brake pressure per axle, runout, rolling resistance, etc.
- Immediate clarity: Intuitive and quick to use
- Precise control over any axle
- Print and database function
- Connect with other devices in the test lane

ICperform via tablet app: Perform tests and control without leaving the vehicle

- No constant getting in and out of the vehicle
- Measurement values directly from the driver's seat
- Convenient control of the entire test procedure

Modularly expandable at any time

- APS3 wireless pressure sensors: wireless measurement of pressure values in truck or trailer braking systems
- BPF 200 wireless pedal force meter: wireless measurement of pedal force for high repeatability
- MSS 8400 toe tester: measures axle play and straight-line stability for wheel alignment recommendations
- GST8508 and GST8600 joint play testers: quick detection of defects and wear in the wheel suspension

Scope of delivery:

- 2x roller set with weighing function
- Control cabinet incl. ASA livestream
- 15 m cable set
- ICperform software
- ICperform tablet app

Minimum PC requirements: Windows 11 Professional, CPU 3GHz (Intel Pentium Gen 12), 8GB DDR5, 512GB SSD, 6x USB, 1x RS232 (for infrared remote control), 1x LAN. The additional use of a tablet requires a PC with ICperform software and a Wi-Fi network with router.

Truck Brake Tester BD 6000 | 16t | 1100mm | 8-point scale

Article number: 1 691 810 112



BD 6000: Robust mechanics, maximum reliability

Truck brake tester for premium demands

- For trucks up to 16t axle load
- Completely hot-dip galvanized
- Electromagnetic motor brake
- Quartz-coated premium rollers with 1100mm length

Fully equipped without compromise

- 8-point scale for measuring axle weight and deceleration
- 2 rotation speeds
- 4x4 automatic all-wheel drive detection
- ASA live stream
- Speed sensor
- 50 mm roller elevation for more precise and safer testing
- Including ICperform software
- Including ICperform tablet app

Display options: analog, digital or mobile

- Analog: Classic visualization on an analog display
- Digital: Full control with ICperform software on your PC
- Mobile: Measurement values directly on the tablet in the driver's seat

ICperform software – analog is so yesterday

- Additional measurement variables such as axle weight, brake force difference, minimum braking, brake pressure per axle, runout, rolling resistance, etc.
- Immediate clarity: Intuitive and quick to use
- Precise control over any axle
- Print and database function
- Connect with other devices in the test lane

ICperform via tablet app: Perform tests and control without leaving the vehicle

- No constant getting in and out of the vehicle
- Measurement values directly from the driver's seat
- Convenient control of the entire test procedure

Modularly expandable at any time

- APS3 wireless pressure sensors: wireless measurement of pressure values in truck or trailer braking systems
- BPF 200 wireless pedal force meter: wireless measurement of pedal force for high repeatability
- MSS 8400 toe tester: measures axle play and straight-line stability for wheel alignment recommendations
- GST8508 and GST8600 joint play testers: quick detection of defects and wear in the wheel suspension

Scope of delivery:

- 2x roller set with weighing function
- Control cabinet incl. ASA livestream
- 15 m cable set
- ICperform software
- ICperform tablet app

Minimum PC requirements: Windows 11 Professional, CPU 3GHz (Intel Pentium Gen 12), 8GB DDR5, 512GB SSD, 6x USB, 1x RS232 (for infrared remote control), 1x LAN. The additional use of a tablet requires a PC with ICperform software and a Wi-Fi network with router.

Truck Brake Tester BD 6000 | 16t | 1100mm | 8-point scale | 230V

Article number: 1 691 810 113



BD 6000: Robust mechanics, maximum reliability

Truck brake tester for premium demands

- For trucks up to 16t axle load
- Completely hot-dip galvanized
- Electromagnetic motor brake
- Quartz-coated premium rollers with 1100mm length

Fully equipped without compromise

- 8-point scale for measuring axle weight and deceleration
- 2 rotation speeds
- 4x4 automatic all-wheel drive detection
- Speed sensor
- 50 mm roller elevation for more precise and safer testing
- Including ICperform software
- Including ICperform tablet app

Display options: analog, digital or mobile

- Analog: Classic visualization on an analog display
- Digital: Full control with ICperform software on your PC
- Mobile: Measurement values directly on the tablet in the driver's seat

ICperform software – analog is so yesterday

- Additional measurement variables such as axle weight, brake force difference, minimum braking, brake pressure per axle, runout, rolling resistance, etc.
- Immediate clarity: Intuitive and quick to use
- Precise control over any axle
- Print and database function
- Connect with other devices in the test lane

ICperform via tablet app: Perform tests and control

without leaving the vehicle

- No constant getting in and out of the vehicle
- Measurement values directly from the driver's seat
- Convenient control of the entire test procedure

Modularly expandable at any time

- APS3 wireless pressure sensors: wireless measurement of pressure values in truck or trailer braking systems
- BPF 200 wireless pedal force meter: wireless measurement of pedal force for high repeatability
- MSS 8400 toe tester: measures axle play and straight-line stability for wheel alignment recommendations
- GST8508 and GST8600 joint play testers: quick detection of defects and wear in the wheel suspension

Scope of delivery:

- 2x roller set with weighing function
- Control cabinet
- 15 m cable set
- ICperform software
- ICperform tablet app

Minimum PC requirements: Windows 11 Professional, CPU 3GHz (Intel Pentium Gen 12), 8GB DDR5, 512GB SSD, 6x USB, 1x RS232 (for infrared remote control), 1x LAN. The additional use of a tablet requires a PC with ICperform software and a Wi-Fi network with router.

Truck Brake Tester BD 6000 | 16t | 1000mm | 8-point scale | Spike

Article number: 1 691 810 114



BD 6000: Robust mechanics, maximum reliability

Truck brake tester for premium demands

- For trucks up to 16t axle load
- Completely hot-dip galvanized
- Electromagnetic motor brake
- Spike rollers with 1000mm length

Fully equipped without compromise

- 8-point scale for measuring axle weight and deceleration
- 2 rotation speeds
- 4x4 automatic all-wheel drive detection
- ASA live stream
- Speed sensor
- 50 mm roller elevation for more precise and safer testing
- Including ICperform software
- Including ICperform tablet app

Display options: analog, digital or mobile

- Analog: Classic visualization on an analog display
- Digital: Full control with ICperform software on your PC
- Mobile: Measurement values directly on the tablet in the driver's seat

ICperform software – analog is so yesterday

- Additional measurement variables such as axle weight, brake force difference, minimum braking, brake pressure per axle, runout, rolling resistance, etc.
- Immediate clarity: Intuitive and quick to use
- Precise control over any axle
- Print and database function
- Connect with other devices in the test lane

ICperform via tablet app: Perform tests and control without leaving the vehicle

- No constant getting in and out of the vehicle
- Measurement values directly from the driver's seat
- Convenient control of the entire test procedure

Modularly expandable at any time

- APS3 wireless pressure sensors: wireless measurement of pressure values in truck or trailer braking systems
- BPF 200 wireless pedal force meter: wireless measurement of pedal force for high repeatability
- MSS 8400 toe tester: measures axle play and straight-line stability for wheel alignment recommendations
- GST8508 and GST8600 joint play testers: quick detection of defects and wear in the wheel suspension

Scope of delivery:

- 2x roller set with weighing function
- Control cabinet incl. ASA livestream
- 15 m cable set
- ICperform software
- ICperform tablet app

Minimum PC requirements: Windows 11 Professional, CPU 3GHz (Intel Pentium Gen 12), 8GB DDR5, 512GB SSD, 6x USB, 1x RS232 (for infrared remote control), 1x LAN. The additional use of a tablet requires a PC with ICperform software and a Wi-Fi network with router.

Truck Brake Tester BD 7000 | 13t | 1000mm | 8-point scale

Article number: 1 691 880 111



BD 7000: The all-rounder for axle loads up to 13 tons

Combo brake tester BD 7000: the best of both worlds

- For cars and trucks with an axle load of up to 13 tons
- Fully galvanized
- Electromagnetic engine brake
- Quartz-coated premium rollers with a length of 1000 mm

Fully equipped without compromise

- 8-point scale for measuring axle weight and deceleration
- 2 rotation speeds
- 4x4 Automatic all-wheel drive detection
- ASA livestream
- Speed sensor
- 32mm roller elevation for precise and safe testing
- Including ICperform software
- Including ICperform tablet app

Hydraulic load simulation: testing without stopping

- Lifting device for load simulation with 200 mm stroke
- Saves manual lashing with tensioning straps or chains on each individual axle
- Convenient operation from the driver's cab, without getting out
- Suitable for trucks, trailers and semi-trailers
- Particularly recommended for empty or light trucks
- Compact integration into the roller housing

Choice of display: analog, digital or mobile

- Analog: classic display via analog display
- Digital: full control with ICperform software on the PC
- Mobile: measured values directly on the tablet in the driver's seat

ICperform software – analog was yesterday

- Clarity at first glance: intuitive and quick to use
- Targeted control of any axle
- Clear display of axle weight, brake force difference, minimum braking rate, brake pressure per axle, runout, rolling resistance, etc.
- Print and database function
- Networking with other test devices in the test lane

ICperform via tablet app: Test and control without getting out

- No constant getting in and out
- Measured values directly in the driver's seat
- Convenient control of the entire test procedure

Modularly expandable at any time

- APS3 wireless pressure sensors: wireless measurement of pressure values in truck or trailer braking systems
- BPF 200 wireless pedal force meter: wireless measurement of pedal pressure for accurately repeatable braking
- MSS 8400 quick-track tester: measures axle play and straight-line stability for axle alignment recommendations
- GST8508 and GST8600 joint play testers: quick detection of defects and wear in the wheel suspension

Scope of delivery:

- 2x roller set with weighing function
- Control cabinet incl. ASA livestream
- 30 m cable set
- ICperform software
- ICperform tablet app

Minimum PC requirements: Windows 11 Professional, CPU 3GHz (Intel Pentium Core i3), 8GB DDR5, 512GB SSD, 6x USB

Truck Brake Tester BD 7000 | 13t | 1000mm | 8-point scale | +200mm lifting

Article number: 1 691 880 110



BD 7000: The all-rounder for axle loads up to 13 tons

Combo brake tester BD 7000: the best of both worlds

- For cars and trucks with an axle load of up to 13 tons
- Fully galvanized
- Electromagnetic engine brake
- Quartz-coated premium rollers with a length of 1000 mm

Fully equipped without compromise

- 8-point scale for measuring axle weight and deceleration
- 2 rotation speeds
- 4x4 Automatic all-wheel drive detection
- ASA livestream
- Speed sensor
- 32mm roller elevation for precise and safe testing
- Including ICperform software
- Including ICperform tablet app

Hydraulic load simulation: testing without stopping

- Lifting device for load simulation with 200 mm stroke
- Saves manual lashing with tensioning straps or chains on each individual axle
- Convenient operation from the driver's cab, without getting out
- Suitable for trucks, trailers and semi-trailers
- Particularly recommended for empty or light trucks
- Compact integration into the roller housing

Choice of display: analog, digital or mobile

- Analog: classic display via analog display
- Digital: full control with ICperform software on the PC
- Mobile: measured values directly on the tablet in the driver's seat

ICperform software – analog was yesterday

- Clarity at first glance: intuitive and quick to use
- Targeted control of any axle
- Clear display of axle weight, brake force difference, minimum braking rate, brake pressure per axle, runout, rolling resistance, etc.
- Print and database function
- Networking with other test devices in the test lane

ICperform via tablet app: Test and control without getting out

- No constant getting in and out
- Measured values directly in the driver's seat
- Convenient control of the entire test procedure

Modularly expandable at any time

- APS3 wireless pressure sensors: wireless measurement of pressure values in truck or trailer braking systems
- BPF 200 wireless pedal force meter: wireless measurement of pedal pressure for accurately repeatable braking
- MSS 8400 quick-track tester: measures axle play and straight-line stability for axle alignment recommendations
- GST8508 and GST8600 joint play testers: quick detection of defects and wear in the wheel suspension

Scope of delivery:

- 2x roller set with weighing function and hydraulic load simulation
- Control cabinet incl. ASA livestream
- 30 m cable set
- ICperform software
- ICperform tablet app

Minimum PC requirements: Windows 11 Professional, CPU

Truck Brake Tester BD 8000 | 18t | 1000mm | 8-point scale

Article number: 1 691 810 121



BD 8000: The truck brake tester for the most demanding requirements

Maximum performance, zero compromises: the BD 8000

- For trucks with an axle load of up to 18 tons
- Fully galvanized
- Electromagnetic engine brake
- Quartz-coated premium rollers with a length of 1000 mm

Fully equipped with no compromises

- 8-point scale for measuring axle weight and deceleration
- 2 rotation speeds
- 4x4 automatic all-wheel drive detection
- ASA livestream
- Speed sensor
- 50mm roller elevation for precise and safe testing
- Including ICperform software
- Including ICperform tablet app

Display options: analog, digital or mobile

- Analog: Classic display on analog display
- Digital: Full control with ICperform software on your PC
- Mobile: Measurement values directly on the tablet in the driver's seat

ICperform software – analog is so yesterday

- Clarity at first glance: Intuitive and quick to use
- Targeted control of any axle
- Clear display of axle weight, brake force difference, minimum braking, brake pressure per axle, runout, rolling resistance, etc.
- Print and database function
- Networking with other test devices in the test lane

ICperform via tablet app: Test and control without getting out

- No constant getting in and out
- Measurement values directly from the driver's seat
- Convenient control of the entire test procedure

Modularly expandable at any time

- APS3 wireless pressure sensors: wireless measurement of pressure values in truck or trailer braking systems
- BPF 200 wireless pedal force meter: wireless measurement of pedal pressure for repeatable braking
- MSS 8400 quick-track tester: measures axle play and straight-line stability for axle alignment recommendations
- GST8508 and GST8600 joint play testers: quick detection of defects and wear in the wheel suspension

Scope of delivery:

- 2x roller set with weighing function
- Control cabinet incl. ASA livestream
- 30 m cable set
- ICperform software
- ICperform tablet app

Minimum PC requirements: Windows 11 Professional, CPU 3GHz (Intel Pentium Gen 12), 8GB DDR5, 512GB SSD, 6x USB, 1x RS232 (for infrared remote control), 1x LAN. The additional use of a tablet requires a PC with ICperform software and a Wi-Fi network with router.

Truck Brake Tester BD 8000 | 18t | 1000mm | 8-point scale | +200mm lifting

Article number: 1 691 810 120



BD 8000: The truck brake tester for the most demanding requirements

Maximum performance, zero compromises: the BD 8000

- For trucks with an axle load of up to 18 tons
- Fully galvanized
- Electromagnetic engine brake
- Quartz-coated premium rollers with a length of 1000 mm

Fully equipped with no compromises

- 8-point scale for measuring axle weight and deceleration
- 2 rotation speeds
- 4x4 automatic all-wheel drive detection
- ASA livestream
- Speed sensor
- 50mm roller elevation for precise and safe testing
- Including ICperform software
- Including ICperform tablet app

Hydraulic load simulation: Testing without stopping

- Lifting device for load simulation with 200 mm stroke
- Eliminates the need for manual lashing with tensioning straps or chains on each individual axle
- Convenient operation from the driver's cab without getting out
- Suitable for trucks, trailers and semi-trailers
- Particularly recommended for empty or light trucks
- Compact integration in the roller housing

Display options: analog, digital or mobile

- Analog: Classic display on analog display
- Digital: Full control with ICperform software on your PC
- Mobile: Measurement values directly on the tablet in the driver's seat

ICperform software – analog is so yesterday

- Clarity at first glance: Intuitive and quick to use
- Targeted control of any axle
- Clear display of axle weight, brake force difference, minimum braking, brake pressure per axle, runout, rolling resistance, etc.
- Print and database function
- Networking with other test devices in the test lane

ICperform via tablet app: Test and control without getting out

- No constant getting in and out
- Measurement values directly from the driver's seat
- Convenient control of the entire test procedure

Modularly expandable at any time

- APS3 wireless pressure sensors: wireless measurement of pressure values in truck or trailer braking systems
- BPF 200 wireless pedal force meter: wireless measurement of pedal pressure for repeatable braking
- MSS 8400 quick-track tester: measures axle play and straight-line stability for axle alignment recommendations
- GST8508 and GST8600 joint play testers: quick detection of defects and wear in the wheel suspension

Scope of delivery:

- 2x roller set with weighing function and hydraulic load simulation
- Control cabinet incl. ASA livestream
- 15 m cable set
- ICperform software
- ICperform tablet app

Minimum PC requirements: Windows 11 Professional, CPU

Truck Brake Tester BD 8000 | 18t | 1000mm | 8-point scale | +200mm lifting | Spike rollers

Article number: 1 691 810 123



BD 8000: The truck brake tester for the most demanding requirements

Maximum performance, zero compromises: the BD 8000

- For trucks with an axle load of up to 18 tons
- Fully galvanized
- Electromagnetic engine brake
- Spike rollers with a length of 1000 mm

Fully equipped with no compromises

- 8-point scale for measuring axle weight and deceleration
- 2 rotation speeds
- 4x4 automatic all-wheel drive detection
- ASA livestream
- Speed sensor
- 50mm roller elevation for precise and safe testing
- Including ICperform software
- Including ICperform tablet app

Hydraulic load simulation: Testing without stopping

- Lifting device for load simulation with 200 mm stroke
- Eliminates the need for manual lashing with tensioning straps or chains on each individual axle
- Convenient operation from the driver's cab without getting out
- Suitable for trucks, trailers and semi-trailers
- Particularly recommended for empty or light trucks
- Compact integration in the roller housing

Display options: analog, digital or mobile

- Analog: Classic display on analog display
- Digital: Full control with ICperform software on your PC
- Mobile: Measurement values directly on the tablet in the driver's seat

ICperform software – analog is so yesterday

- Clarity at first glance: Intuitive and quick to use
- Targeted control of any axle
- Clear display of axle weight, brake force difference, minimum braking, brake pressure per axle, runout, rolling resistance, etc.
- Print and database function
- Networking with other test devices in the test lane

ICperform via tablet app: Test and control without getting out

- No constant getting in and out
- Measurement values directly from the driver's seat
- Convenient control of the entire test procedure

Modularly expandable at any time

- APS3 wireless pressure sensors: wireless measurement of pressure values in truck or trailer braking systems
- BPF 200 wireless pedal force meter: wireless measurement of pedal pressure for repeatable braking
- MSS 8400 quick-track tester: measures axle play and straight-line stability for axle alignment recommendations
- GST8508 and GST8600 joint play testers: quick detection of defects and wear in the wheel suspension

Scope of delivery:

- 2x roller set with weighing function and hydraulic load simulation
- Control cabinet
- 30 m cable set
- ICperform software
- ICperform tablet app

Minimum PC requirements: Windows 11 Professional, CPU

Truck Brake Tester BD 8000 | 18t | 1000mm | 8-point scale | 5,2km/h

Article number: 1 691 810 122



BD 8000: The truck brake tester for the most demanding requirements

Maximum performance, zero compromises: the BD 8000

- For trucks with an axle load of up to 18 tons
- Fully galvanized
- Electromagnetic engine brake
- Quartz-coated premium rollers with a length of 1000 mm

Fully equipped with no compromises

- 8-point scale for measuring axle weight and deceleration
- 2 rotation speeds
- 4x4 automatic all-wheel drive detection
- ASA livestream
- Speed sensor
- 50mm roller elevation for precise and safe testing
- Including ICperform software
- Including ICperform tablet app

Display options: analog, digital or mobile

- Analog: Classic display on analog display
- Digital: Full control with ICperform software on your PC
- Mobile: Measurement values directly on the tablet in the driver's seat

ICperform software – analog is so yesterday

- Clarity at first glance: Intuitive and quick to use
- Targeted control of any axle
- Clear display of axle weight, brake force difference, minimum braking, brake pressure per axle, runout, rolling resistance, etc.
- Print and database function
- Networking with other test devices in the test lane

ICperform via tablet app: Test and control without getting out

- No constant getting in and out
- Measurement values directly from the driver's seat
- Convenient control of the entire test procedure

Modularly expandable at any time

- APS3 wireless pressure sensors: wireless measurement of pressure values in truck or trailer braking systems
- BPF 200 wireless pedal force meter: wireless measurement of pedal pressure for repeatable braking
- MSS 8400 quick-track tester: measures axle play and straight-line stability for axle alignment recommendations
- GST8508 and GST8600 joint play testers: quick detection of defects and wear in the wheel suspension

Scope of delivery:

- 2x roller set with weighing function
- Control cabinet
- 30 m cable set
- ICperform software
- ICperform tablet app

Minimum PC Anforderungen: Windows 11 Professional, CPU 3Ghz (Intel Pentium Gen 12), 8GB DDR5, 512GB SSD, 6x USB, 1x RS232 (für Infrarot Fernbedienung), 1x LAN Die zusätzliche Nutzung eines Tablets erfordert einen PC mit ICperform Software sowie ein WLAN-Netzwerk mit Router.

Truck Brake Tester BD 8000 | 18t | 1100mm | 8-point scale

Article number: 1 691 810 125



BD 8000: The truck brake tester for the most demanding requirements

Maximum performance, zero compromises: the BD 8000

- For trucks with an axle load of up to 18 tons
- Fully galvanized
- Electromagnetic engine brake
- Quartz-coated premium rollers with a length of 1100 mm

Fully equipped with no compromises

- 8-point scale for measuring axle weight and deceleration
- 2 rotation speeds
- 4x4 automatic all-wheel drive detection
- ASA livestream
- Speed sensor
- 50mm roller elevation for precise and safe testing
- Including ICperform software
- Including ICperform tablet app

Display options: analog, digital or mobile

- Analog: Classic display on analog display
- Digital: Full control with ICperform software on your PC
- Mobile: Measurement values directly on the tablet in the driver's seat

ICperform software – analog is so yesterday

- Clarity at first glance: Intuitive and quick to use
- Targeted control of any axle
- Clear display of axle weight, brake force difference, minimum braking, brake pressure per axle, runout, rolling resistance, etc.
- Print and database function
- Networking with other test devices in the test lane

ICperform via tablet app: Test and control without getting out

- No constant getting in and out
- Measurement values directly from the driver's seat
- Convenient control of the entire test procedure

Modularly expandable at any time

- APS3 wireless pressure sensors: wireless measurement of pressure values in truck or trailer braking systems
- BPF 200 wireless pedal force meter: wireless measurement of pedal pressure for repeatable braking
- MSS 8400 quick-track tester: measures axle play and straight-line stability for axle alignment recommendations
- GST8508 and GST8600 joint play testers: quick detection of defects and wear in the wheel suspension

Scope of delivery:

- 2x roller set with weighing function
- Control cabinet incl. ASA livestream
- 30 m cable set
- ICperform software
- ICperform tablet app

Minimum PC requirements: Windows 11 Professional, CPU 3GHz (Intel Pentium Gen 12), 8GB DDR5, 512GB SSD, 6x USB, 1x RS232 (for infrared remote control), 1x LAN. The additional use of a tablet requires a PC with ICperform software and a Wi-Fi network with router.

Truck Brake Tester BD 8000 | 18t | 1100mm | 8-point scale | +200mm lifting

Article number: 1 691 810 124



BD 8000: The truck brake tester for the most demanding requirements

Maximum performance, zero compromises: the BD 8000

- For trucks with an axle load of up to 18 tons
- Fully galvanized
- Electromagnetic engine brake
- Quartz-coated premium rollers with a length of 1100 mm

Fully equipped with no compromises

- 8-point scale for measuring axle weight and deceleration
- 2 rotation speeds
- 4x4 automatic all-wheel drive detection
- ASA livestream
- Speed sensor
- 50mm roller elevation for precise and safe testing
- Including ICperform software
- Including ICperform tablet app

Hydraulic load simulation: Testing without stopping

- Lifting device for load simulation with 200 mm stroke
- Eliminates the need for manual lashing with tensioning straps or chains on each individual axle
- Convenient operation from the driver's cab without getting out
- Suitable for trucks, trailers and semi-trailers
- Particularly recommended for empty or light trucks
- Compact integration in the roller housing

Display options: analog, digital or mobile

- Analog: Classic display on analog display
- Digital: Full control with ICperform software on your PC
- Mobile: Measurement values directly on the tablet in the driver's seat

ICperform software – analog is so yesterday

- Clarity at first glance: Intuitive and quick to use
- Targeted control of any axle
- Clear display of axle weight, brake force difference, minimum braking, brake pressure per axle, runout, rolling resistance, etc.
- Print and database function
- Networking with other test devices in the test lane

ICperform via tablet app: Test and control without getting out

- No constant getting in and out
- Measurement values directly from the driver's seat
- Convenient control of the entire test procedure

Modularly expandable at any time

- APS3 wireless pressure sensors: wireless measurement of pressure values in truck or trailer braking systems
- BPF 200 wireless pedal force meter: wireless measurement of pedal pressure for repeatable braking
- MSS 8400 quick-track tester: measures axle play and straight-line stability for axle alignment recommendations
- GST8508 and GST8600 joint play testers: quick detection of defects and wear in the wheel suspension

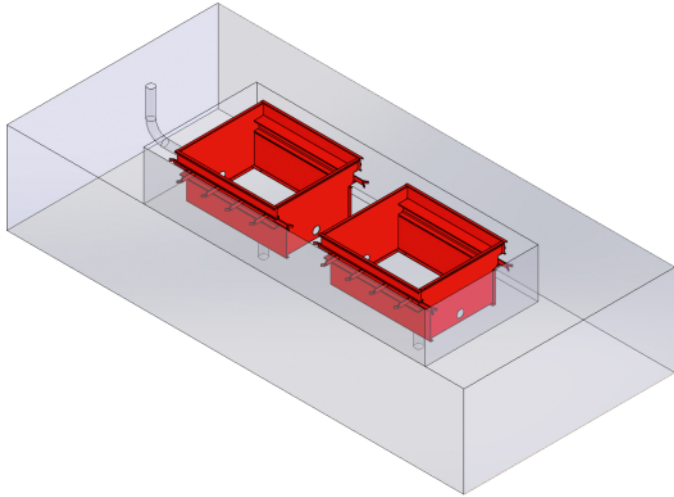
Scope of delivery:

- 2x roller set with weighing function and hydraulic load simulation
- Control cabinet incl. ASA livestream
- 30 m cable set
- ICperform software
- ICperform tablet app

Minimum PC requirements: Windows 11 Professional, CPU

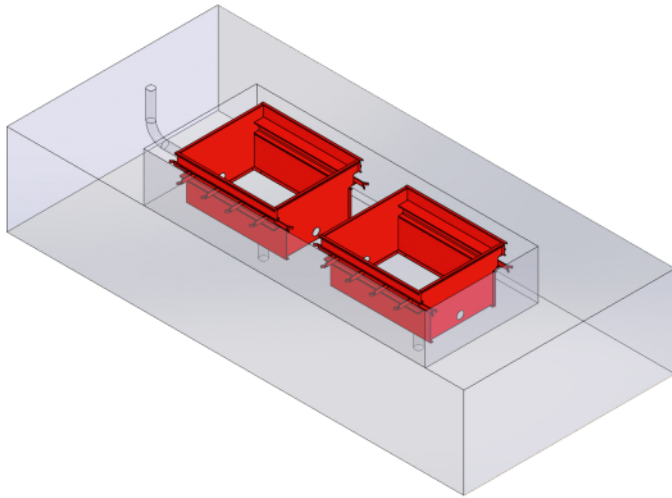
Assembling case BD 6xxx / 1000 mm | without pit

Article number: 1 691 811 081



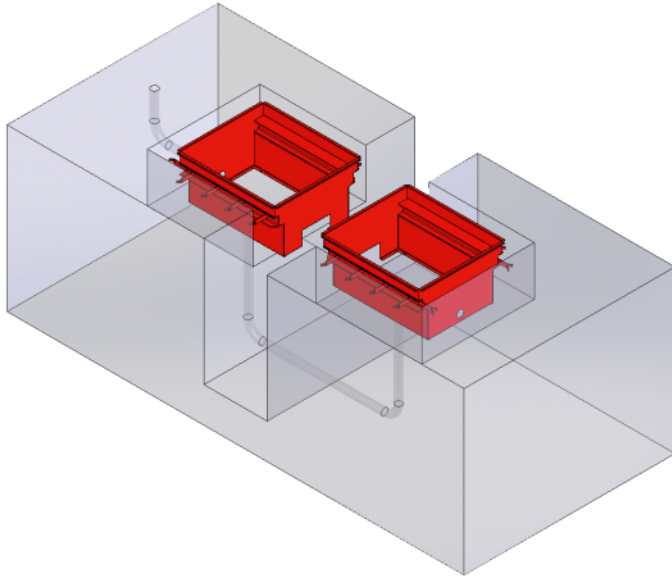
Assembling case BD 6xxx / 1100 mm | without pit

Article number: 1 691 811 083



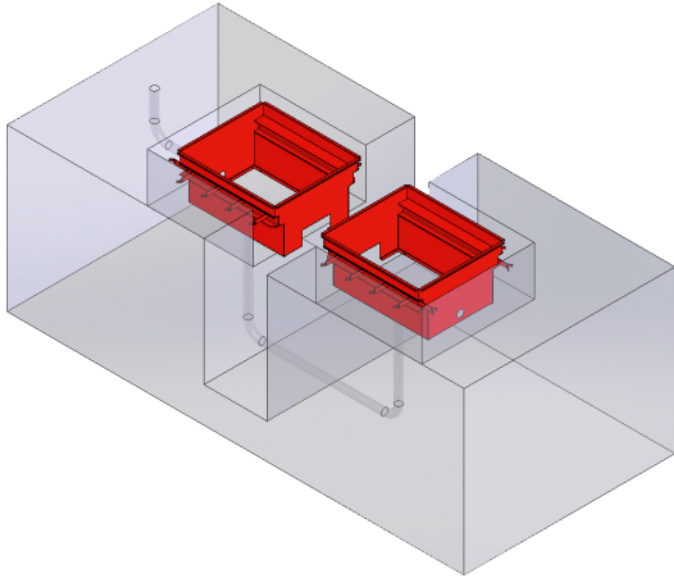
Assembling case BD 6xxx / 1000 mm | with pit

Article number: 1 691 811 082



Assembling case BD 6xxx / 1100 mm | with pit

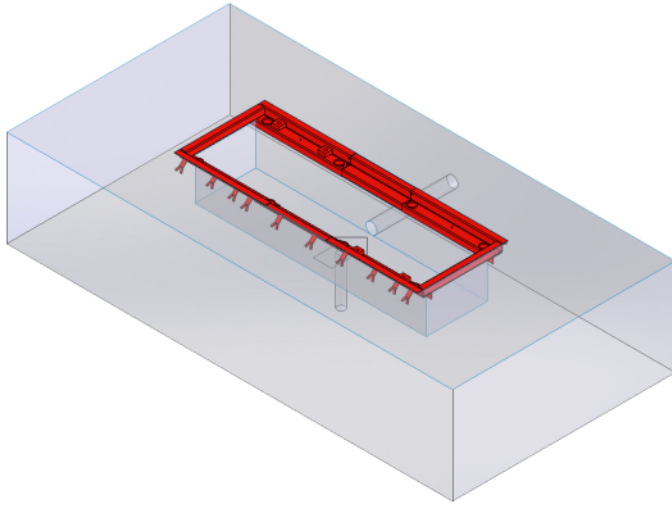
Article number: 1 691 811 084



Built-in frame BD 7xxx / 1000 mm / 13 to | track width 2800 mm | non-separated (w/o pit)

For track width 2800 mm

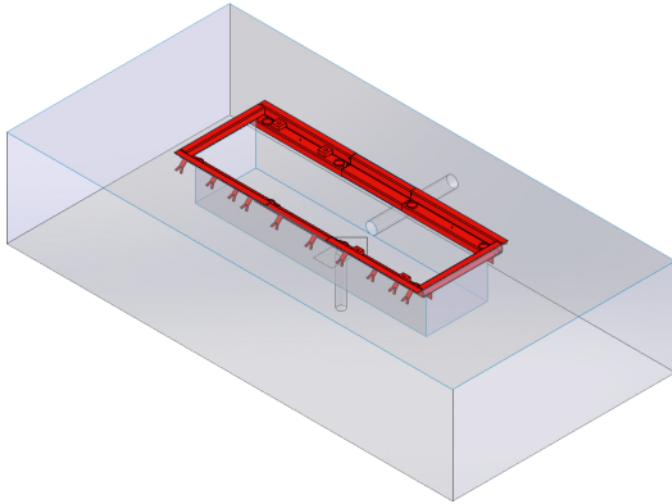
Article number: 1 691 880 702



Built-in frame BD 7xxx / 1000 mm / 13 to | track width 2900 mm | non-separated (w/o pit)

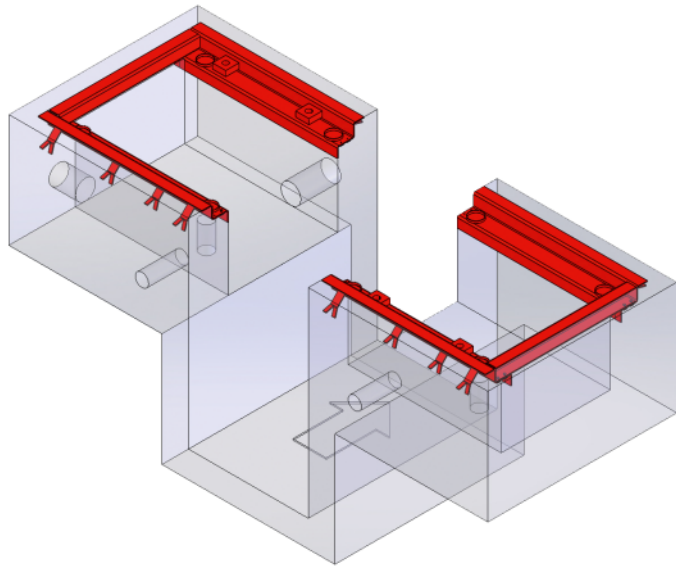
For track width 2900 mm

Article number: 1 691 880 703



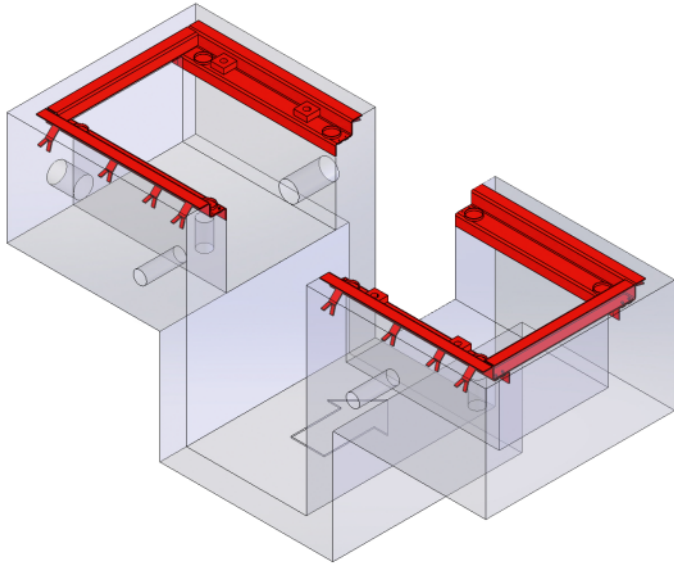
Built-in frame BD 7xxx / 1000 mm / 13 to | separated, with pit

Article number: 1 691 880 700



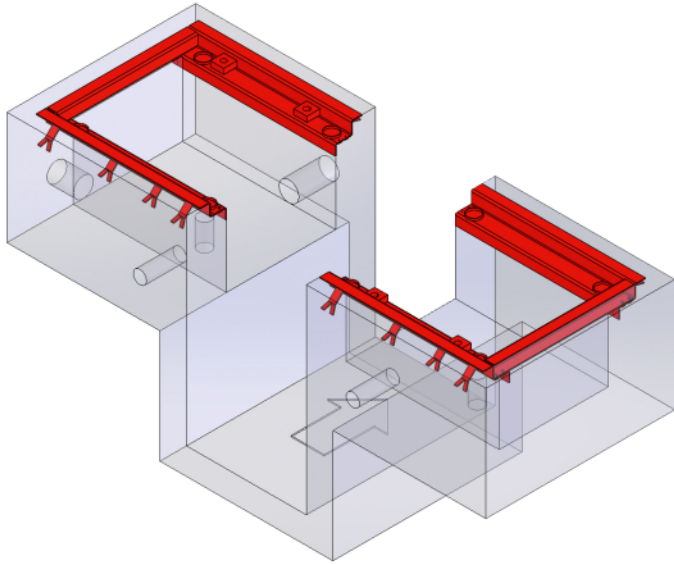
Built-in frame BD 8xxx / 1000 mm / 18 to | separated, with pit

Article number: 1 691 810 713



Built-in frame BD 8xxx / 1100 mm | separated, with pit

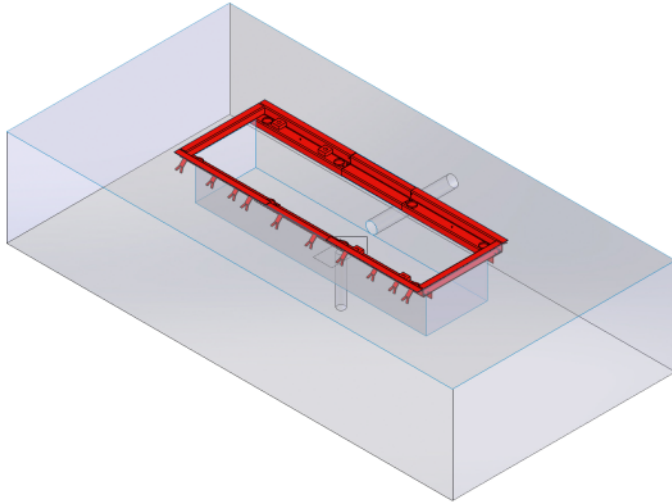
Article number: 1 691 810 762



Built-in frame BD 8xxx / 1000/1100 mm | track width 3000 mm | non-separated (w/o pit)

For track width 3000 mm

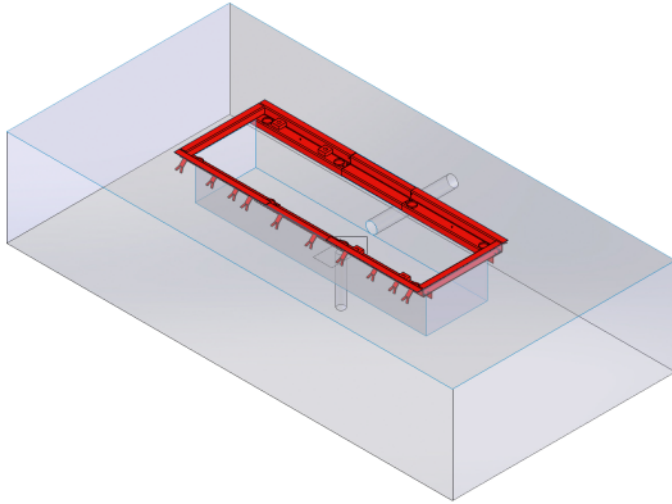
Article number: 1 691 810 714



Built-in frame BD 8xxx / 1000/1100 mm | track width 3100 mm | non-separated (w/o pit)

For track width 3100 mm

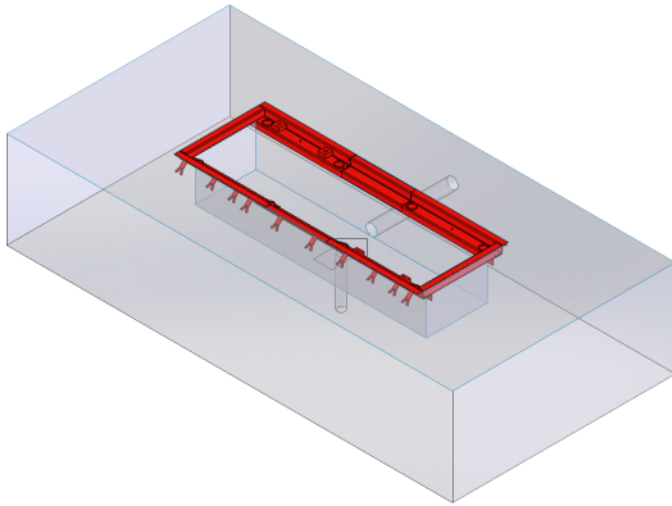
Article number: 1 691 810 715



Built-in frame BD 8xxx / 1000/1100 mm | track width 3200 mm | non-separated (w/o pit)

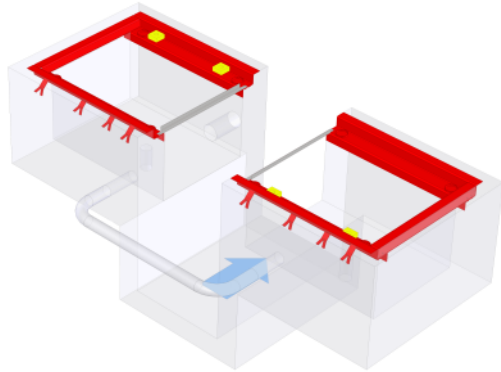
For track width 3200 mm

Article number: 1 691 810 716



Built-in frame BD 8xxx / 1300 mm | for pit use

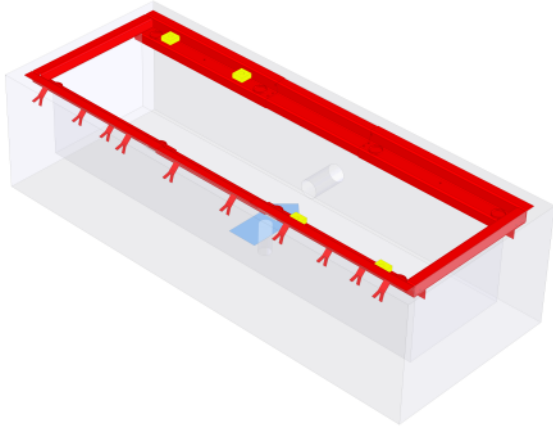
Article number: 1 691 810 763



Built-in frame BD 8xxx / 1300 mm | track width 3200 mm | non-separated (w/o pit)

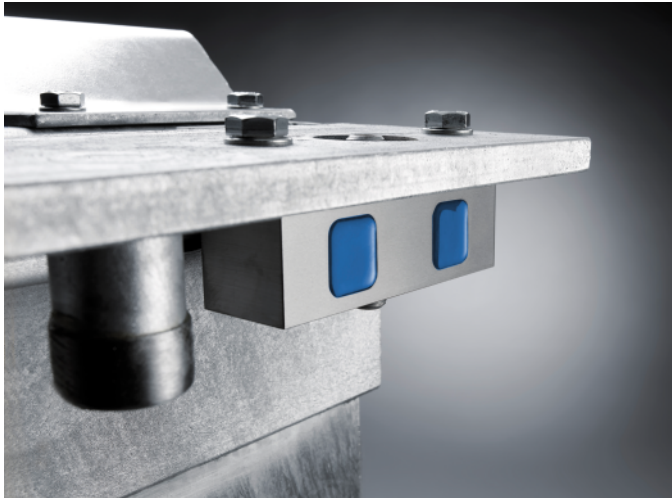
For track width 3200 mm

Article number: 1 691 810 766



8-point scale BD 7xxx / BD 8xxx

Article number: 1 691 810 718



Depending on configuration already included.

Standard-Software Truck | ICperform

Each configuration requires a license

Article number: 1 691 810 741



Tablet-App

Article number: 1 691 810 756



System requirements:

- Operating system: Android ab 5.0
- Minimum size: 8"
- Recommended size: 9.6"
- Width-to-height ratio: 16:9 or 16:10
- Basic requirement: WLAN network with router

IR remote control Truck

Article number: 1 691 810 704



- Incl. battery

Alternatively, operation via tablet app is possible.

IR Kit Truck

Receiver RS232, Remote Control, battery

Article number: 1 691 810 702



Scope of delivery:

- Receiver RS232
- Remote Control
- Battery

Included with Beissbarth PC Trolley and Analog Display. Optional if separate PC is used or no display is needed.

Testlane PC with a serial interface

PC can also be bought locally | Please pay attention to the minimum requirements: • Operating system: Windows 7, Windows 10, 64 Bit • Processor: Celeron 2.7 GHz • Random access memory: 4 GB • Hard disk: 500 GB • Serial port: 2 x RS232 (COM)

Article number: 1 691 810 703



System requirements when using your separate PC:

- Operating system: Windows 7, Windows 10, 64 Bit
- Processor: Celeron 2.7 GHz
- Random access memory: 4 GB
- Hard disk: 500 GB
- Serial port: 2 x RS232 (COM)

PC cabinet Standard | empty

Moving trolley enables the best arrangement and positioning of all PC components | Empty trolley! To add PC component you can additionally order 1 691 810 743.

Article number: 1 691 811 250



Monitor holder 17 - 27"

Includes only the monitor holder (Monitor not included)

Article number: 1 693 740 884



Monitor holder 22 - 35"

Includes only the monitor holder (Monitor not included)

Article number: 1 693 740 911



PC gear pack for PC cabinet Standard

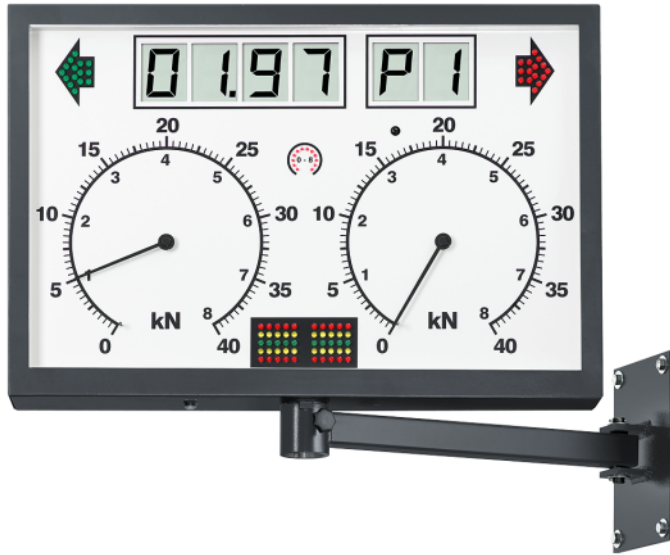
Full PC equipment | incl. PC, monitor, monitor holder, mouse, keyboard and printer

Article number: 1 691 810 743



Display RAL 7016 | analog, rectangular | LCD, svivel arm, IR receiver

Article number: 1 691 810 750

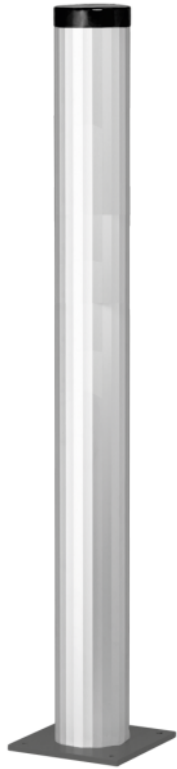


Scope of delivery: Analog display incl. 30 m B-Net cable

Stand column aluminium | RAL 7016 | for TV Monitor / rectangular analog display

Alternative to wall mounting, mounting solution for TV monitors or square analogue displays | TV adapter for stand column / swivel arm (item no. 1 691 810 722) is also required to attach a TV monitor!

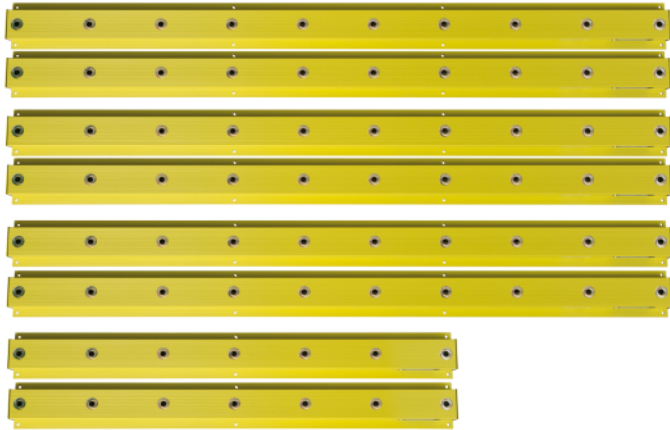
Article number: 1 691 810 722



Pit safety PSC2 | cross | 1,5/2,5m

1.5 m safety area front roll sets and 2.5 m safety area behind roll sets

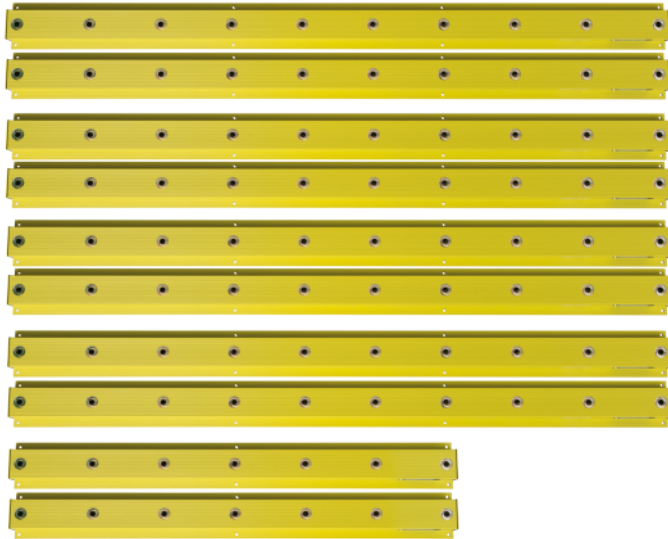
Article number: 1 691 810 724



Pit safety PSC2 | cross | 2,5/2,5m

2.5 m safety area front and behind roll sets

Article number: 1 691 810 725



Pit safety PSC1 | long | 15m

15 m safety area

Article number: 1 691 810 726



Swivel bracket PSC1

Additional swivel bracket for pit protection

Article number: 1 692 100 102



Wired air pressure sensor APS1 | basic set - PM / PX1

Article number: 1 691 810 733



Wired pedal force tester APS1 | PD

Article number: 1 691 810 734



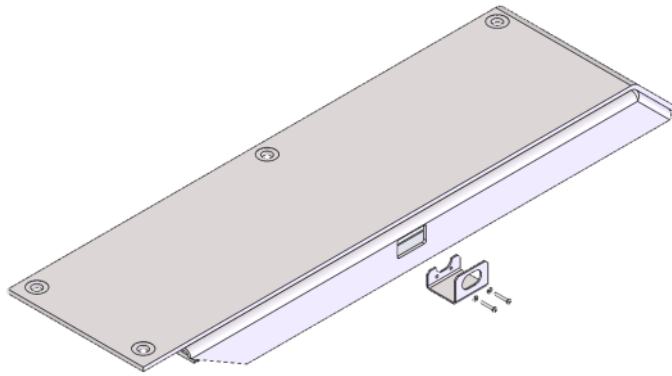
Warn-System for air pressure sensors

Article number: 1 691 810 735



Retrofit set for VDO tachograph test BD 6xxx | left

Article number: 1 691 811 539



Adaptation kit for Semmler Tachocontrol BD6xxx | left

1 x sensing roller support for Semmler rolls, 1 x fixing light barrier

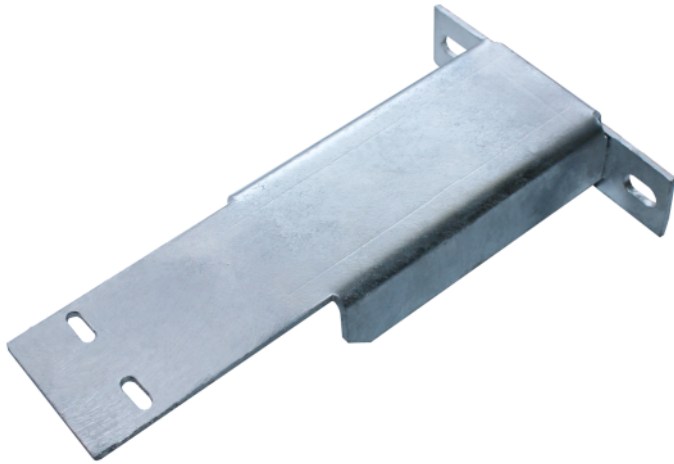
Article number: 1 691 811 126



Adaptation kit for Semmler Tachocontrol BD7xxx | 13 to

1 x sensing roller support for Semmler rolls, 1 x fixing light barrier

Article number: 1 691 880 706



Adaptation kit for tachograph test with proximity switch BD8xxx | 18 to

1 x fixing light barrier

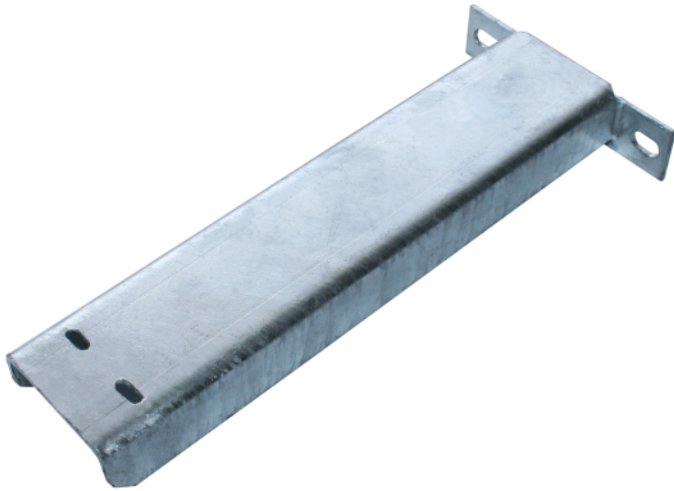
Article number: 1 691 810 736



Adaptation kit for Semmler Tachocontrol BD8xxx | 18 to

1 x sensing roller support for Semmler rolls, 1 x fixing light barrier

Article number: 1 691 810 737



Kit-Drive over plate BD 844x / 1300 mm

4 pieces, 2 pieces per side

Article number: 1 691 810 740



Remote Control for load simulation

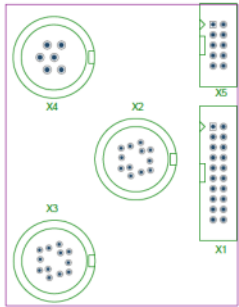
Article number: 1 691 810 701



Kit Interface for MB 8xxx | Upgrade to new generation

For upgrading from 8xxx to the new truck generation

Article number: 1 691 810 759



Lift upgrade kit to NTG | Upgrade to new generation

For upgrading to the new truck generation when the installed unit is a MB 8200 with hydraulic lifting device

Article number: 1 691 810 761

Kit Display NTG | Upgrade to new generation

For upgrading to the new truck generation when the installed brake tester has an analogue display that will continue to be used

Article number: 1 691 810 760

Speedsensor for MB 8x00 with 1000 mm rollers

For upgrading to the new truck generation when the installed brake tester does not have speed sensors yet

Article number: 1 691 811 484

Speedsensor for MB 8x00 with 1100mm rollers

For upgrading to the new truck generation when the installed brake tester does not have speed sensors yet

Article number: 1 691 811 485

Speedsensor for MB 8815

For upgrading to the new truck generation when the installed brake tester does not have speed sensors yet

Article number: 1 691 881 023

Axle weight upgrade from 4- to 8-point scale | for BD 6xxx / MB 8x00

For upgrading to the new truck generation when the installed brake tester has only 4-point weight system sensors

Article number: 1 691 812 198

Axle weight 8-point scale | for BD 6xxx / MB 8x00

For upgrading to the new truck generation when the installed brake tester has no weight system sensors

Article number: 1 691 801 012



Basic Set MRS 433 | Upgrade to new generation

For upgrading to the new truck generation when the installed brake tester has wireless air pressure sensors

Article number: 1 691 802 107

Mounting bracket | Upgrade to new generation

For upgrading to the new truck generation when the installed brake tester has wireless air pressure sensors

Article number: 1 691 811 712

USB-COM Converter | Upgrade to new generation

For upgrading to the new truck generation when the installed brake tester has wireless air pressure sensors

Article number: 1 693 770 583

Digital calibration kit for brake tester

Digital calibration kit with transport suitcase, digital sensor and calibration manual

Article number: 1 691 601 392



Air pressure sensors | Truck | APS 3

Measurement of pneumatic pressure values in truck or trailer braking systems with wireless data transmission

Article number: 1 693 770 658



APS 3: Truck air pressure sensores

- Measurement of pneumatic and hydraulic pressure values in truck or trailer braking systems
- Measurement of pedal forces on actuation of service or parking brake
- Radio transmission of the measured values to the brake tester control system

Compact and robust design for mobility uses

- Compact and robust design for daily use in the underbody of trucks
- Pneumatic quick-release coupling system for a simplified use
- Immediate sensor activation by removing it from the charging station
- Capable of using up to 10 sensors (PM, PX, Pedal)
- ICperform garage Truck Software can manage up to 6 axles (6 PX, 1 PM)
- All axles of a vehicle can be tested in one test cycle
- The receiver constantly requests the measured values of all the connected air pressure sensors
- RF receiver with USB connection for wireless data transfer to the brake tester control system
- Pneumatic 20 bar

Scope of delivery:

- 3x wireless air pressure transducers 20 bar (PM, P1, P2)
- 3x pneumatic hoses
- Wireless receiver
- Charging station

Note:

APS3 is only compatible with the new generation of truck brake testers (BD series). Older models of the MB 8815 and MB 8100

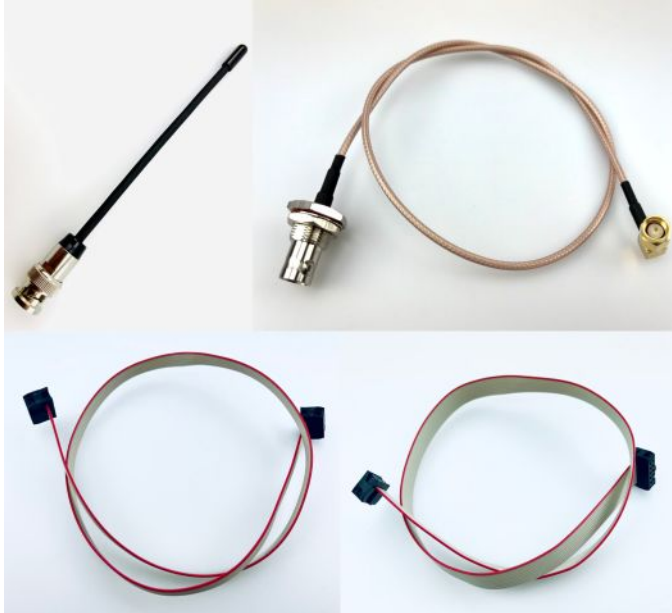
generation require a prior upgrade to the new generation. When using older generations (MB 8000, MB 8100, MB 8815 or STL 9000), the connection kit 1693770673 must be ordered additionally.

APS3 integration in ASA livestream: this also requires the connection kit 1693770673.

ASA/APS3 wireless connection kit | Truck | 433Mhz

For integrating APS3 wireless pressure sensors directly into ASA livestream. Also allows the use of wireless APS3 pressure sensors and pedal force meters with older models of the MB 8815, MB 8100 or STL 9000 generation. Installed in the control cabinet to establish a wireless connection at 433 MHz.

Article number: 1 693 770 673



Kit 4x drive-over plates | BD7xxx

Article number: 1 691 880 704



Kit 4x drive-over plates | BD6xxx & BD8xxx | 1000mm & 1100mm

Article number: 1 691 810 717



Pedal force meter | APS3

For wireless measurement of pedal force for the BD6 and BD8 truck brake testers. Requires the APS3 Starter Kit 1693770658.

Article number: 1 693 770 662



Measuring range: 0 - 1000N
Resolution: 0.1N
Accuracy: 0.5% of full scale value
Weight: approx. 490g
Power supply: 12V DC
Connection cable: 2m
Radio: 433Mhz, range 30m
Battery: Li-Po with 700mAh

Air pressure sensor Px universal | for APS3

Single wireless air pressure sensor for expanding the APS3 to axles 3 to 6 or for replacing existing air pressure sensors PM, P1, or P2.

Article number: 1 693 770 659



Single wireless air pressure sensor for expanding the APS3 to axles 3 to 6 or for replacing existing air pressure sensors PM, P1, or P2.

Pneumatic connection hose | Truck | APS 3

Spare part for connecting the APS3 pressure sensors. Length: 200 mm

Article number: 1 693 770 663



Measurement range: 20 bar Length: 200 mm Length with fittings: 250 mm Connection 1: NW5 coupling Connection 2: Wing nut M16 × 1.5

Series BD 6000



**Truck Brake Tester BD 6000 | 16t | 1000mm
| 8-point scale**

Article number: 1 691 810 111



**Truck Brake Tester BD 6000 | 16t | 1100mm
| 8-point scale**

Article number: 1 691 810 112



**Truck Brake Tester BD 6000 | 16t | 1100mm
| 8-point scale | 230V**

Article number: 1 691 810 113



**Truck Brake Tester BD 6000 | 16t | 1000mm
| 8-point scale | Spike**

Article number: 1 691 810 114



**Truck Brake Tester BD 8000 | 18t | 1000mm
| 8-point scale | +200mm lifting**

Article number: 1 691 810 120



**Truck Brake Tester BD 8000 | 18t | 1000mm
| 8-point scale | +200mm lifting | Spike
rollers**

Article number: 1 691 810 123



**Truck Brake Tester BD 8000 | 18t | 1000mm
| 8-point scale | 5,2km/h**

Article number: 1 691 810 122



**Truck Brake Tester BD 8000 | 18t | 1100mm
| 8-point scale**

Article number: 1 691 810 125



**Truck Brake Tester BD 8000 | 18t | 1100mm
| 8-point scale | +200mm lifting**

Article number: 1 691 810 124



**Truck Brake Tester BD 7000 | 13t | 1000mm
| 8-point scale**

Article number: 1 691 880 111



**Truck Brake Tester BD 7000 | 13t | 1000mm
| 8-point scale | +200mm lifting**

Article number: 1 691 880 110

Series BD 8000

**Truck Brake Tester BD 8000 | 18t | 1000mm
| 8-point scale**

Article number: 1 691 810 121

IMPORTANT NOTES

- Please notice: This list contains spare parts, too.
- Without instruction or assembly.
- Delivery ex works including packaging.

VERSION 2025.12.13 – PRICES ON REQUEST

- Starting from now all previous lists will lose their validity.
- Please read our general terms and conditions in the latest version before ordering; to be found under www.beissbarth.com.

Beissbarth Automotive Testing Solutions GmbH

Friedrichshafener Str. 602
82205 Gilching, Germany
sales@beissbarth.com
www.beissbarth.com

Telefon: +49-(0)89-14901-0
Telefax: +49-(0)89-14901-246

Order number 1 693 602 008 **Print norm** BB XXX / XX.XX.2020 DE · Subject to technical and program changes, errors excepted.

