



STANDARD SERVICE

Wheel balancer G.20 LCD

Entry-level wheel balancer | mechanical clamping | automatic data arm | LCD control panel | Inside line laser | wheel guard with virtual sonar for steel rims

Article number: 1692501007

Description

Precise balancing in tight spaces: Compact car wheel balancer

Measurement and balancing:

- Balancing in 4.7 seconds
- Automatic stop of the wheel 15° before correction position
- LED for better visibility when placing weights
- Internal line laser for precise positioning of weights
- Split program for hiding weights behind different spokes

Wheel data recognition:

- Automatic data arm for measuring distance and diameter and weight placement
- Automatic selection of clip-on and adhesive weight program
- Highest measurement accuracy +/- 0.5g

Auto Adaptive Mode:

- Dynamic tolerance adjustment based on weight and size
- Minimizes remaining imbalance to eliminate smallest vibrations noticeable by the driver

Wheel guard with virtual sonar:

- Automatic recognition of rim width in steel rims
- Without manual input with measuring gauge or sonar
- Closing of wheel guard automatically starts balancing program

Robust LCD control panel:

- Easy operation
- Built workshop-tough
- Independent of user language

Quick clamping:

- Mechanical clamping with quick-lock nut
- Stable 40mm shaft
- Wheel weights up to 75kg
- Optional with wheel lift

Scope of delivery

- 4 cones Ø43-112,5mm
- Quick-lock nut Pro Grip 40x4
- Clamping cap
- Pressure ring
- Rubber ring
- 60g counterweight
- Weight pliers

Technical Data

Electrical connection	230 V 50 - 60 Hz 1 ph
Packaging length	1100 mm
Packaging width	700 mm

Packaging height	1165 mm
Length	1100 mm
Height	1220 mm
Width	965 mm
Max. wheel diameter	914 mm
Max. rim diameter	30 "
Min. rim diameter	10 "
Weight	110 kg
Motor power	0,15 kW
Max. rim width	20 "
Max. wheel weight	75 kg
Measuring speed	100 U/min
Measuring time	4 s
Balancing accuracy +/-	0 g
Min. rim width	1 "
Shaft diameter	40 mm
Thread type	40 x 4 TR - Metrisches ISO-Trapezgewinde
Stackable	2 Stück
Units per 20ft container	30 Stück
Units per 40ft container	66 Stück

Accessories

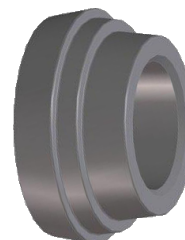
1695653888 Clamping hood large diameter



1695601012 Wheel lift | for wheel balancers



1692502049 Cone | for German OEMs | Ø 56.5 / 57 / 66.5 / 70 - 72.5 mm



1692502037 Universal 3-4-5-6-hole adapter | Ø 95 - 120 mm



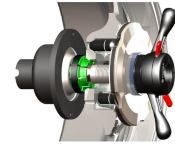
1692502000

G.Zero Wheel lift | with memory function



1695655296

QuickPlate | 5-Holes | 96 - 186 mm | 48mm & 58mm



1695656570

All-in-One Centering Kit | Duo Expert 54-78mm | 4x4 | Flange Plates
No.1 & 3

