



HIGH VOLUME

## Wheel balancer G.50P

High-volume workshop wheel balancer | pneumatic clamping | automatic data arm | 19" touchscreen | spot laser | wheel guard with sonar for steel and aluminum wheels | auto stop function | One Plane Balancing

Article number: 1692501003

## Description

**Eliminates vibrations day-in day-out: Wheel balancer for intensive us**

### Measurement and balancing

- Balancing in 4.7 seconds
- Automatic stop of the wheel in exact correction position
- LED for better visibility when placing weights
- Internal line laser for precise positioning of weights
- Split program for hiding weights behind different spokes

### Wheel data recognition

- Automatic data arm for measuring distance and diameter and weight placement
- Automatic selection of clip-on and adhesive weight program
- Highest measurement accuracy +/- 0.5g

### Auto Adaptive Mode

- Dynamic tolerance adjustment based on weight and size
- Minimizes remaining imbalance to eliminate smallest vibrations noticeable by the driver

### Wheel guard with integrated sonar

- Automatic recognition of rim width in steel and aluminium rims
- Without manual input with measuring gauge
- Closing of wheel guard automatically starts balancing program

### 19" touchscreen monitor

- Graphical step-by-step illustrations
- Simplifies correct balancing with guided processes
- Touchscreen usable with gloves on

### Secure pneumatic clamping

- Pneumatic clamping with 250kg clamping force
- Ensures consistent clamping for all four wheels
- Wheel weights up to 75kg
- Optional with wheel lift

### One Plane Balancing

- Eliminates dynamic imbalance with only one weight instead of two
- Fewer correction positions on the rim
- Less consumption of weights

**Upgrade to Pro version (optional):** Upgradable with sonar for runout measurement and Hubmatch function.

## Scope of delivery

- 4 cones Ø43-112,5mm
- Pneumatic quick-lock sleeve
- Clamping cap for aluminum rims
- Pressure ring
- Rubber ring
- 60g counterweight
- Weight pliers

## Technical Data

Electrical connection	230 V   50 - 60 Hz   1 ph
Packaging length	1480 mm
Packaging width	1130 mm
Packaging height	1165 mm
Length	1300 mm
Height	1770 mm
Width	1300 mm
Max. wheel diameter	1117 mm
Max. rim diameter	30 "
Min. rim diameter	10 "
Weight	130 kg
Motor power	0,15 kW
Max. wheel weight	75 kg
Measuring speed	100 U/min
Measuring time	4 s
Balancing accuracy +/-	0 g
Shaft diameter	40 mm
Thread type	40 x 4 TR - Metrisches ISO-Trapezgewinde
Stackable	2 Stück
Units per 20ft container	13 Stück
Units per 40ft container	30 Stück
Air supply	7 - 10 bar

## Accessories

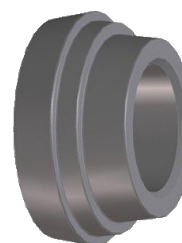
1695653888 Clamping hood large diameter



1695601012 Wheel lift | for wheel balancers



1692502049 Cone | for German OEMs | Ø 56.5 / 57 / 66.5 / 70 - 72.5 mm



1692502037 Universal 3-4-5-6-hole adapter | Ø 95 - 120 mm



---

1692502000 G.Zero Wheel lift | with memory function



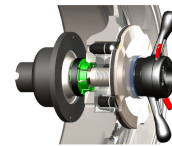
---

1692502165 Eccentricity Diagnostic Upgrade | for G.50 with touch monitor



---

1695655296 QuickPlate | 5-Holes | 96 - 186 mm | 48mm & 58mm



---

1695656570 All-in-One Centering Kit | Duo Expert 54-78mm | 4x4 | Flange Plates No.1 & 3



---

1692502038 3-arm star adapter SR3 | for light trucks | Ø 161 / 170 / 184.15 / 205 / 222.25 / 245 mm

