



HIGH VOLUME

Wheel balancer G.50

High-volume workshop wheel balancer | mechanical clamping | automatic data arm | 19" touchscreen | spot laser | wheel guard with sonar for steel and aluminum wheels | auto stop function | One Plane Balancing

Article number: 1692501002

Description

Eliminates vibrations day-in day-out: Wheel balancer for intensive us

Measurement and balancing

- Balancing in 4.7 seconds
- Automatic stop of the wheel in exact correction position
- LED for better visibility when placing weights
- Internal line laser for precise positioning of weights
- Split program for hiding weights behind different spokes

Wheel data recognition

- Automatic data arm for measuring distance and diameter and weight placement
- Automatic selection of clip-on and adhesive weight program
- Highest measurement accuracy +/- 0.5g

Auto Adaptive Mode

- Dynamic tolerance adjustment based on weight and size
- Minimizes remaining imbalance to eliminate smallest vibrations noticeable by the driver

Wheel guard with integrated sonar

- Automatic recognition of rim width in steel and aluminium rims
- Without manual input with measuring gauge
- Closing of wheel guard automatically starts balancing program

19" touchscreen monitor

- Graphical step-by-step illustrations
- Simplifies correct balancing with guided processes
- Touchscreen usable with gloves on

Quick clamping

- Mechanical clamping with quick-lock nut
- Stable 40mm shaft
- Wheel weights up to 75kg
- Optional with wheel lift

One Plane Balancing

- Eliminates dynamic imbalance with only one weight instead of two
- Fewer correction positions on the rim
- Less consumption of weights

Upgrade to Pro version (optional): Upgradable with sonar for runout measurement and Hubmatch function.

Scope of delivery

- 4 cones Ø43-112,5mm
- Quick-lock nut Pro Grip 40x4
- Clamping cap
- Pressure ring
- Rubber ring
- 60g counterweight
- Weight pliers

Technical Data

Electrical connection	230 V 50 - 60 Hz 1 ph
Packaging length	1480 mm
Packaging width	1130 mm
Packaging height	1165 mm
Length	1300 mm
Height	1770 mm
Width	1300 mm
Max. wheel diameter	1117 mm
Max. rim diameter	30 "
Min. rim diameter	10 "
Weight	120 kg
Motor power	0,15 kW
Max. rim width	20 "
Max. wheel weight	75 kg
Measuring speed	100 U/min
Measuring time	4 s
Balancing accuracy +/-	0 g
Min. rim width	1 "
Shaft diameter	40 mm
Thread type	40 x 4 TR - Metrisches ISO-Trapezgewinde
Stackable	2 Stück
Units per 20ft container	13 Stück
Units per 40ft container	30 Stück

Accessories

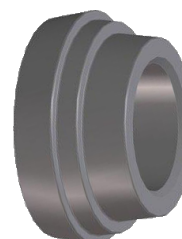
1695653888 Clamping hood large diameter

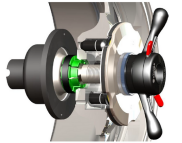


1695601012 Wheel lift | for wheel balancers



1692502049 Cone | for German OEMs | Ø 56.5 / 57 / 66.5 / 70 - 72.5 mm



1692502037	Universal 3-4-5-6-hole adapter Ø 95 - 120 mm	
1692502000	G.Zero Wheel lift with memory function	
1692502165	Eccentricity Diagnostic Upgrade for G.50 with touch monitor	
1695655296	QuickPlate 5-Holes 96 - 186 mm 48mm & 58mm	
1695656570	All-in-One Centering Kit Duo Expert 54-78mm 4x4 Flange Plates No.1 & 3	
1692502038	3-arm star adapter SR3 for light trucks Ø 161 / 170 / 184.15 / 205 / 222.25 / 245 mm	