



SERIES BD 7000

## Truck Brake Tester BD 7000 | 13t | 1000mm | 8-point scale

Article number: 1691880111

## **BD 7000: The all-rounder for axle loads up to 13 tons**

### **Combo brake tester BD 7000: the best of both worlds**

- For cars and trucks with an axle load of up to 13 tons
- Fully galvanized
- Electromagnetic engine brake
- Quartz-coated premium rollers with a length of 1000 mm

### **Fully equipped without compromise**

- 8-point scale for measuring axle weight and deceleration
- 2 rotation speeds
- 4x4 Automatic all-wheel drive detection
- ASA livestream
- Speed sensor
- 32mm roller elevation for precise and safe testing
- Including ICperform software
- Including ICperform tablet app

### **Hydraulic load simulation: testing without stopping**

- Lifting device for load simulation with 200 mm stroke
- Saves manual lashing with tensioning straps or chains on each individual axle
- Convenient operation from the driver's cab, without getting out
- Suitable for trucks, trailers and semi-trailers
- Particularly recommended for empty or light trucks
- Compact integration into the roller housing

### **Choice of display: analog, digital or mobile**

- Analog: classic display via analog display
- Digital: full control with ICperform software on the PC
- Mobile: measured values directly on the tablet in the driver's seat

### **ICperform software – analog was yesterday**

- Clarity at first glance: intuitive and quick to use
- Targeted control of any axle
- Clear display of axle weight, brake force difference, minimum braking rate, brake pressure per axle, runout, rolling resistance, etc.
- Print and database function
- Networking with other test devices in the test lane

### **ICperform via tablet app: Test and control without getting out**

- No constant getting in and out
- Measured values directly in the driver's seat
- Convenient control of the entire test procedure

### **Modularly expandable at any time**

- APS3 wireless pressure sensors: wireless measurement of pressure values in truck or trailer braking systems
- BPF 200 wireless pedal force meter: wireless measurement of pedal pressure for accurately repeatable braking
- MSS 8400 quick-track tester: measures axle play and straight-line stability for axle alignment recommendations
- GST8508 and GST8600 joint play testers: quick detection of defects and wear in the

wheel suspension

## Technical Data

Electrical connection	400
Length	1300
Height	680
Width	1140
Max. wheel diameter	1000
Measuring system	-
Roller length	1000
Roller elevation	32
Roller diameter	205
Min. test width	900
Max. test width	2900
Min. wheel diameter	320
Roller axle distance	398
	700
Motor connection cable	7 x 4
Test speed (low)	2
Test speed (high)	4
Motor revolution speed (low)	1435
Motor revolution speed (high)	2915
	57
	117
	2 x 6,5
	2 x 8,5
Max. axle load testable	13
ASA livestream	ja

## Accessories

1691810704 IR remote control Truck



---

1691880706      Adaptation kit for Semmler Tachocontrol BD7xxx | 13 to



---

1691811250      PC cabinet Standard | empty



---

1693740884      Monitor holder 17 - 27"



---

1693740911      Monitor holder 22 - 35"

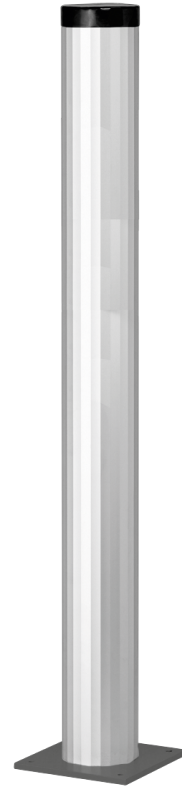


---

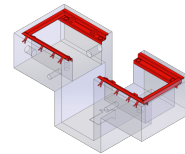
1691601392      Digital calibration kit for brake tester



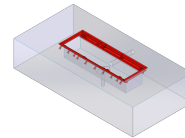
1693770658	Air pressure sensors   Truck   APS 3	
1691810750	Display RAL 7016   analog, rectangular   LCD, svivel arm, IR receiver	
1693770673	ASA/APS3 wireless connection kit   Truck   433Mhz	
1691880704	Kit 4x drive-over plates   BD7xxx	
1691810735	Warn-System for air pressure sensors	
1691810734	Wired pedal force tester APS1   PD	
1691810702	IR Kit Truck	
1691810703	PC For Test Lanes	
1691810743	PC gear pack for PC cabinet Standard	
1691810722	Stand column aluminium   RAL 7016   for TV Monitor / rectangular analog display	



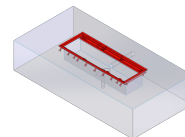
1691880700 Built-in frame BD 7xxx / 1000 mm / 13 to | separated, with pit



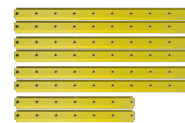
1691880702 Built-in frame BD 7xxx / 1000 mm / 13 to | track width 2800 mm | non-separated (w/o pit)



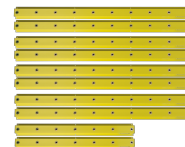
1691880703 Built-in frame BD 7xxx / 1000 mm / 13 to | track width 2900 mm | non-separated (w/o pit)



1691810724 Pit safety PSC2 | cross | 1,5/2,5m



1691810725 Pit safety PSC2 | cross | 2,5/2,5m



1693770659 Air pressure sensor Px universal | for APS3

