



SERIES BD 8000

## Truck Brake Tester BD 8000 | 18t | 1100mm | 8-point scale

Article number: 1691810125

## Description

### **BD 8000: The truck brake tester for the most demanding requirements**

#### **Maximum performance, zero compromises: the BD 8000**

- For trucks with an axle load of up to 18 tons
- Fully galvanized
- Electromagnetic engine brake
- Quartz-coated premium rollers with a length of 1100 mm

#### **Fully equipped with no compromises**

- 8-point scale for measuring axle weight and deceleration
- 2 rotation speeds
- 4x4 automatic all-wheel drive detection
- ASA livestream
- Speed sensor
- 50mm roller elevation for precise and safe testing
- Including ICperform software
- Including ICperform tablet app

#### **Display options: analog, digital or mobile**

- Analog: Classic display on analog display
- Digital: Full control with ICperform software on your PC
- Mobile: Measurement values directly on the tablet in the driver's seat

#### **ICperform software – analog is so yesterday**

- Clarity at first glance: Intuitive and quick to use
- Targeted control of any axle
- Clear display of axle weight, brake force difference, minimum braking, brake pressure per axle, runout, rolling resistance, etc.
- Print and database function
- Networking with other test devices in the test lane

#### **ICperform via tablet app: Test and control without getting out**

- No constant getting in and out
- Measurement values directly from the driver's seat
- Convenient control of the entire test procedure

#### **Modularly expandable at any time**

- APS3 wireless pressure sensors: wireless measurement of pressure values in truck or trailer braking systems
- BPF 200 wireless pedal force meter: wireless measurement of pedal pressure for repeatable braking
- MSS 8400 quick-track tester: measures axle play and straight-line stability for axle alignment recommendations
- GST8508 and GST8600 joint play testers: quick detection of defects and wear in the wheel suspension

## Scope of delivery

- 2x roller set with weighing function
- Control cabinet incl. ASA livestream
- 30 m cable set
- ICperform software

- ICperform tablet app

*Minimum PC requirements: Windows 11 Professional, CPU 3GHz (Intel Pentium Gen 12), 8GB DDR5, 512GB SSD, 6x USB, 1x RS232 (for infrared remote control), 1x LAN. The additional use of a tablet requires a PC with ICperform software and a Wi-Fi network with router.*

## Technical Data

Electrical connection	400 V
Length	1450 mm
Height	782 mm
Width	1140 mm
Max. wheel diameter	1200 mm
Measuring system	- DMS
Roller length	1100 mm
Roller elevation	50 mm
Roller diameter	280 mm
Min. test width	900 mm
Max. test width	2900 mm
Min. wheel diameter	320 mm
Roller axle distance	438 mm
Weight without lifting device approx.	750 kg
Motor connection cable	7 x 4 mm <sup>2</sup>
Test speed (low)	2 km/h
Test speed (high)	4 km/h
Motor revolution speed (low)	1450 U/min
Motor revolution speed (high)	2950 U/min
Roller revolution speed (low)	43 U/min
Roller revolution speed (high)	87 U/min
Motor power (low)	2 x 10 kW
Motor power (high)	2 x 12,5 kW
Max. axle load testable	18 t
ASA livestream	ja Serienmäßig

## Accessories

1691810704 IR remote control Truck



1691810736      Adaptation kit for tachograph test with proximity switch BD8xxx | 18 to



1691810737      Adaptation kit for Semmler Tachocontrol BD8xxx | 18 to



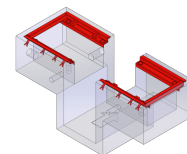
1691811250      PC cabinet Standard | empty



1693740884      Monitor holder 17 - 27"



1691810762      Built-in frame BD 8xxx / 1100 mm | separated, with pit



1693770658      Air pressure sensors | Truck | APS 3



1691810750 Display RAL 7016 | analog, rectangular | LCD, svivel arm, IR receiver



1693770673 ASA/APS3 wireless connection kit | Truck | 433Mhz



1691810717 Kit 4x drive-over plates | BD6xxx & BD8xxx | 1000mm & 1100mm



1691810735 Warn-System for air pressure sensors



1691810734 Wired pedal force tester APS1 | PD



1691810702 IR Kit Truck



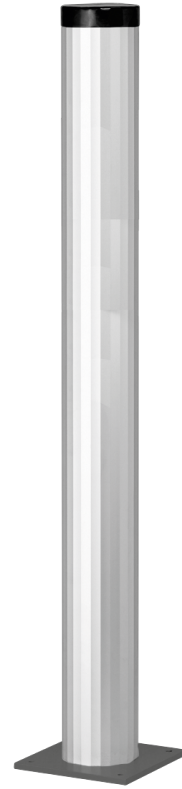
1691810703 PC For Test Lanes



1691810743 PC gear pack for PC cabinet Standard

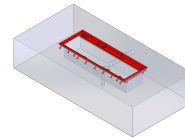


1691810722 Stand column aluminium | RAL 7016 | for TV Monitor / rectangular analog display



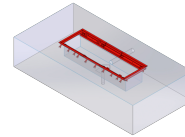
---

1691810714 Built-in frame BD 8xxx / 1000/1100 mm | track width 3000 mm | non-separated (w/o pit)



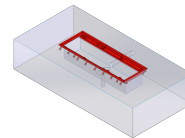
---

1691810715 Built-in frame BD 8xxx / 1000/1100 mm | track width 3100 mm | non-separated (w/o pit)



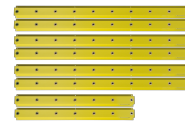
---

1691810716 Built-in frame BD 8xxx / 1000/1100 mm | track width 3200 mm | non-separated (w/o pit)



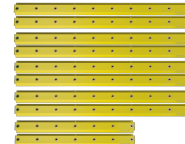
---

1691810724 Pit safety PSC2 | cross | 1,5/2,5m



---

1691810725 Pit safety PSC2 | cross | 2,5/2,5m



---

1693770659 Air pressure sensor Px universal | for APS3

