



SERIES BD 8000

Truck Brake Tester BD 8000 | 18t | 1100mm | 8-point scale | +200mm lifting

Article number: 1691810124

Description

BD 8000: The truck brake tester for the most demanding requirements

Maximum performance, zero compromises: the BD 8000

- For trucks with an axle load of up to 18 tons
- Fully galvanized
- Electromagnetic engine brake
- Quartz-coated premium rollers with a length of 1100 mm

Fully equipped with no compromises

- 8-point scale for measuring axle weight and deceleration
- 2 rotation speeds
- 4x4 automatic all-wheel drive detection
- ASA livestream
- Speed sensor
- 50mm roller elevation for precise and safe testing
- Including ICperform software
- Including ICperform tablet app

Hydraulic load simulation: Testing without stopping

- Lifting device for load simulation with 200 mm stroke
- Eliminates the need for manual lashing with tensioning straps or chains on each individual axle
- Convenient operation from the driver's cab without getting out
- Suitable for trucks, trailers and semi-trailers
- Particularly recommended for empty or light trucks
- Compact integration in the roller housing

Display options: analog, digital or mobile

- Analog: Classic display on analog display
- Digital: Full control with ICperform software on your PC
- Mobile: Measurement values directly on the tablet in the driver's seat

ICperform software – analog is so yesterday

- Clarity at first glance: Intuitive and quick to use
- Targeted control of any axle
- Clear display of axle weight, brake force difference, minimum braking, brake pressure per axle, runout, rolling resistance, etc.
- Print and database function
- Networking with other test devices in the test lane

ICperform via tablet app: Test and control without getting out

- No constant getting in and out
- Measurement values directly from the driver's seat
- Convenient control of the entire test procedure

Modularly expandable at any time

- APS3 wireless pressure sensors: wireless measurement of pressure values in truck or trailer braking systems
- BPF 200 wireless pedal force meter: wireless measurement of pedal pressure for repeatable braking
- MSS 8400 quick-track tester: measures axle play and straight-line stability for axle alignment recommendations

- GST8508 and GST8600 joint play testers: quick detection of defects and wear in the wheel suspension

Scope of delivery

- 2x roller set with weighing function and hydraulic load simulation
- Control cabinet incl. ASA livestream
- 30 m cable set
- ICperform software
- ICperform tablet app
- Remote control for hydraulic load simulation

Minimum PC requirements: Windows 11 Professional, CPU 3GHz (Intel Pentium Gen 12), 8GB DDR5, 512GB SSD, 6x USB, 1x RS232 (for infrared remote control), 1x LAN. The additional use of a tablet requires a PC with ICperform software and a Wi-Fi network with router.

Technical Data

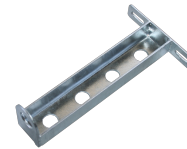
| | |
|------------------------------------|-----------------------|
| Electrical connection | 400 V |
| Length | 1450 mm |
| Height | 782 mm |
| Width | 1140 mm |
| Max. wheel diameter | 1200 mm |
| Measuring system | - DMS |
| Roller length | 1100 mm |
| Roller elevation | 50 mm |
| Roller diameter | 280 mm |
| Min. test width | 900 mm |
| Max. test width | 2900 mm |
| Min. wheel diameter | 320 mm |
| Roller axle distance | 438 mm |
| Weight with lifting device approx. | 1030 kg |
| Motor connection cable | 7 x 4 mm ² |
| Test speed (low) | 2 km/h |
| Test speed (high) | 4 km/h |
| Motor revolution speed (low) | 1450 U/min |
| Motor revolution speed (high) | 2950 U/min |
| Roller revolution speed (low) | 43 U/min |
| Roller revolution speed (high) | 87 U/min |
| Motor power (low) | 2 x 10 kW |
| Motor power (high) | 2 x 12,5 kW |
| Roller set lifting | 200 mm |
| Max. axle load testable | 18 t |

Accessories

1691810704 IR remote control Truck



1691810736 Adaptation kit for tachograph test with proximity switch BD8xxx | 18 to



1691810737 Adaptation kit for Semmler Tachocontrol BD8xxx | 18 to



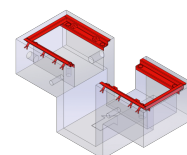
1691811250 PC cabinet Standard | empty



1693740884 Monitor holder 17 - 27"

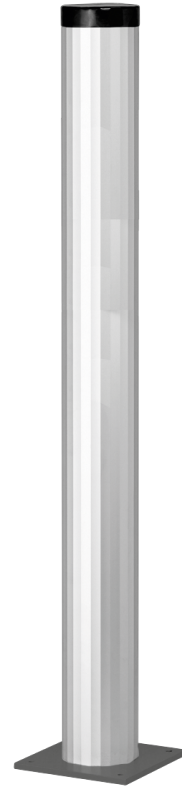


1691810762 Built-in frame BD 8xxx / 1100 mm | separated, with pit

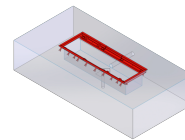


1693770658 Air pressure sensors | Truck | APS 3

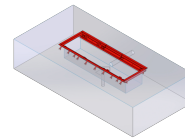
| | | |
|------------|---|---|
| | |  |
| 1691810750 | Display RAL 7016 analog, rectangular LCD, svivel arm, IR receiver |  |
| 1693770673 | ASA/APS3 wireless connection kit Truck 433Mhz |  |
| 1691810717 | Kit 4x drive-over plates BD6xxx & BD8xxx 1000mm & 1100mm |  |
| 1691810735 | Warn-System for air pressure sensors |  |
| 1691810734 | Wired pedal force tester APS1 PD |  |
| 1691810702 | IR Kit Truck |  |
| 1691810703 | PC For Test Lanes |  |
| 1691810743 | PC gear pack for PC cabinet Standard |  |
| 1691810722 | Stand column aluminium RAL 7016 for TV Monitor / rectangular analog display | |



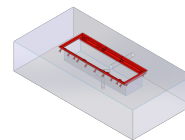
1691810714 Built-in frame BD 8xxx / 1000/1100 mm | track width 3000 mm | non-separated (w/o pit)



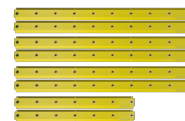
1691810715 Built-in frame BD 8xxx / 1000/1100 mm | track width 3100 mm | non-separated (w/o pit)



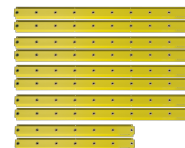
1691810716 Built-in frame BD 8xxx / 1000/1100 mm | track width 3200 mm | non-separated (w/o pit)



1691810724 Pit safety PSC2 | cross | 1,5/2,5m



1691810725 Pit safety PSC2 | cross | 2,5/2,5m



1693770659 Air pressure sensor Px universal | for APS3

