



SERIES BD 8000

Truck Brake Tester BD 8000 | 18t | 1000mm | 8-point scale | 5,2km/h

Article number: 1691810122

Description

BD 8000: The truck brake tester for the most demanding requirements

Maximum performance, zero compromises: the BD 8000

- For trucks with an axle load of up to 18 tons
- Fully galvanized
- Electromagnetic engine brake
- Quartz-coated premium rollers with a length of 1000 mm

Fully equipped with no compromises

- 8-point scale for measuring axle weight and deceleration
- 2 rotation speeds
- 4x4 automatic all-wheel drive detection
- Speed sensor
- 50mm roller elevation for precise and safe testing
- Including ICperform software
- Including ICperform tablet app

Display options: analog, digital or mobile

- Analog: Classic display on analog display
- Digital: Full control with ICperform software on your PC
- Mobile: Measurement values directly on the tablet in the driver's seat

ICperform software – analog is so yesterday

- Clarity at first glance: Intuitive and quick to use
- Targeted control of any axle
- Clear display of axle weight, brake force difference, minimum braking, brake pressure per axle, runout, rolling resistance, etc.
- Print and database function
- Networking with other test devices in the test lane

ICperform via tablet app: Test and control without getting out

- No constant getting in and out
- Measurement values directly from the driver's seat
- Convenient control of the entire test procedure

Modularly expandable at any time

- APS3 wireless pressure sensors: wireless measurement of pressure values in truck or trailer braking systems
- BPF 200 wireless pedal force meter: wireless measurement of pedal pressure for repeatable braking
- MSS 8400 quick-track tester: measures axle play and straight-line stability for axle alignment recommendations
- GST8508 and GST8600 joint play testers: quick detection of defects and wear in the wheel suspension

Scope of delivery

- 2x roller set with weighing function and hydraulic load simulation
- Control cabinet
- 30 m cable set
- ICperform software
- ICperform tablet app

- Remote control software
- Remote control load simulation

Minimum PC requirements: Windows 11 Professional, CPU 3GHz (Intel Pentium Gen 12), 8GB DDR5, 512GB SSD, 6x USB, 1x RS232 (for infrared remote control), 1x LAN.
The additional use of a tablet requires a PC with ICperform software and a Wi-Fi network with router.

Technical Data

Electrical connection	400 V
Length	1350 mm
Height	782 mm
Width	1140 mm
Max. wheel diameter	1200 mm
Measuring system	DMS
Roller length	1000 mm
Roller elevation	50 mm
Roller diameter	280 mm
Min. test width	900 mm
Max. test width	2900 mm
Min. wheel diameter	320 mm
Roller axle distance	438 mm
Weight without lifting device approx.	750 kg
Motor connection cable	7 x 4 mm ²
Test speed (low)	2 km/h
Test speed (high)	5 km/h
Motor revolution speed (low)	1450 U/min
Motor revolution speed (high)	2950 U/min
Roller revolution speed (low)	50 U/min
Roller revolution speed (high)	100 U/min
Motor power (low)	2 x 11 kW
Motor power (high)	2 x 13,5 kW
Max. axle load testable	18 t
ASA livestream	

Accessories

1691810704 IR remote control Truck



1691810737 Adaptation kit for Semmler Tachocontrol BD8xxx | 18 to



1691811250 PC cabinet Standard | empty



1693740884 Monitor holder 17 - 27"



1693770658 Air pressure sensors | Truck | APS 3



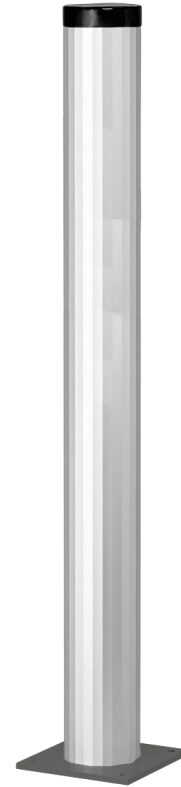
1691810750 Display RAL 7016 | analog, rectangular | LCD, svivel arm, IR receiver



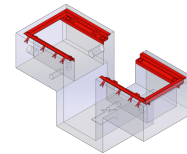
1693770673 ASA/APS3 wireless connection kit | Truck | 433Mhz

		
1691810717	Kit 4x drive-over plates BD6xxx & BD8xxx 1000mm & 1100mm	
1693770659	Air pressure sensor Px universal for APS3	
1691810726	Pit safety PSC 1 long 15m	
1692100102	Swivel bracket PSC 1	
1691810736	Adaptation kit for tachograph test with proximity switch BD8xxx 18 to	
1691810735	Warn-System for air pressure sensors	
1691810734	Wired pedal force tester APS1 PD	
1691810702	IR Kit Truck	
1691810703	PC For Test Lanes	
1691810743	PC gear pack for PC cabinet Standard	
1691810722	Stand column aluminium RAL 7016 for TV Monitor / rectangular	

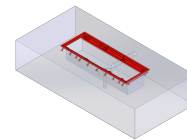
analog display



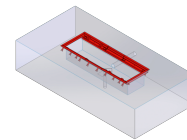
1691810713 Built-in frame BD 8xxx / 1000 mm / 18 to | separated, with pit



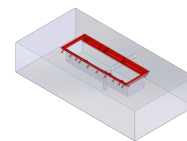
1691810714 Built-in frame BD 8xxx / 1000/1100 mm | track width 3000 mm | non-separated (w/o pit)



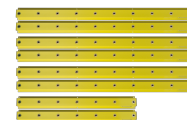
1691810715 Built-in frame BD 8xxx / 1000/1100 mm | track width 3100 mm | non-separated (w/o pit)



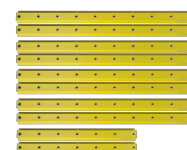
1691810716 Built-in frame BD 8xxx / 1000/1100 mm | track width 3200 mm | non-separated (w/o pit)



1691810724 Pit safety PSC2 | cross | 1,5/2,5m



1691810725 Pit safety PSC2 | cross | 2,5/2,5m



1691601392 Digital calibration kit for brake tester

