

EASY TREAD 2.0

Tyre Scanner Easy Tread 2.0 | Above ground

Automatic tyre tread measurement system with crossing speed up to 8 km/h | Easy Tread for above ground installation | with automatic license plate recognition | Connectivity Kit | Live Monitor | ASA network ready

Article number: 1691200050

Description

NEW: Easy Tread 2.0 comes standard with a connectivity kit to digitize and automate your service lane:

- Live monitor of all crossings of multiple Easy Treads in the same workshop network
- 20% faster results
- Ready for ASA interface
- Simplified connection to dealer management systems and 3rd party systems
- Direct connection of monitors and TVs without using the browser
- Optimized statistic functions

The high weight and torque of electric vehicles causes enormous wear on tires and chassis components. The automatic tire diagnosis of every vehicle entering a workshop allows keeping the tire business inhouse and increasing customer loyalty by. The immediate evaluation of the tire wear pattern simultaneously generates service opportunities for wheel alignment and potentially ADAS calibration.

Easy Tread - Tyre data nonstop

- Automatic tyre wear and diagnosis within seconds
- Clear display of wear information and recommended actions
- Automatic recognition of license plates
- Crossing speed up to 8 km/h (nonstop)
- Measurements in two directions (entering and exiting vehicles)
- High precision thanks to maximum tyre contact area
- Access measurement results without any PC (TV, tablet, smartphone)
- Performance statistics to better manage and optimize your workshop's performance
- No moving parts (low maintenance)
- Quality Made in Germany

Scope of delivery:

- Easy Tread modules for above ground installation (measurement modules, LAN cables, main switch box)
- ANPR camera
- Connectivity Kit
- Drive-on ramps

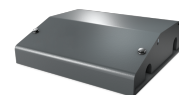
Technical Data

Electrical connection	100 - 230 V 50 - 60 Hz 1 ph
Packaging length	850 mm
Packaging width	550 mm
Packaging height	1250 mm
Gross weight	168 kg
Tyre width max.	450 mm
Depth	1040 mm
Height	85 mm
Width	2245 mm
Maximum load per axle	4 t
Working temperature	0 - 40 °C

Max. speed	8 km/h
Weight	160 kg
Test width min. - max.	895-2095 mm
Packaging unit	1 Palette(n)
Accuracy	± 0,25 mm

Accessories

1691201023 Cable tunnel | for onground installations of Easy Tread



1691200023 PC trolley for Easy Tread



1691200051 Automatic Cleaning Solution | Easy Tread

