



TYRE SCANNER

Tyre diagnosis system VAS 741083 | without trolley | for VOLKSWAGEN

RDS Tyre diagnostic system for above ground / inground installation | without trolley, PC, monitor, mouse and keyboard

Article number: 1691200019

The tyres are the only contact points between a vehicle and the road. The quality of this bonds decides how safely the vehicle can be accelerated and braked. Especially aquaplaning can only be avoided by sufficient tread depth. This is why checking tread wear is a mandatory item of all statutory safety inspection. At the same time, uneven tread wear is a clear indication for a workshop that a wheel alignment should be considered - and that a wheel alignment check should be proposed to the customer.

With the Tyre Diagnostic System (in German "Reifen-Diagnose-System" - RDS), the way the tyres are systematically checked during the vehicle reception is standardized, and thus clearly facilitated. All four wheels are automatically and quickly measured and the result is displayed before the vehicle driver gets out of the car. With the measured tread depths of the tyres immediately available, it is much more easier for the workshop owner to advice the vehicle owner. Positive results given by professional tests, contribute to customer fidelity. The results can be stored in a Windows based system for further references.

The measuring units and the drive-on ramps are anchored to the ground, which makes the installation easy.

Advantages:

- The VAS 741083 needs only few seconds to calculate the tyre’s tread depths of a vehicle
- Clear display of tyre tread depth and wear information, within short time
- Recommended action are displayed (for the vehicle and/or the tyre)
- Crossing speed up to 8 km/h
- Can be integrated above or inground in the workshop
- High precision thanks to the larger wheel contact area.
- Browser-based measurement results on smart TV, PC or tablet computer
- Trolley with PC, monitor, mouse, keyboard, as accessory
- No moving parts (low maintenance)
- Assignment of the tread depths to a certain vehicle, by mean of the automatic license plate recognition (Easy Cam - option)
- Quality from Germany

Easy Cam - Automatic identification of number plates when rolling over:

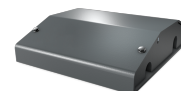
- Infrared camera with independent fully automatic self timer
- Universal set-up for front and rear number plate identification
- Data transfer to Easy Tread via LAN
- Robust steel housing as roll-over protection (Protection class IP65)

Accessories

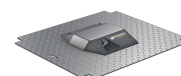
1691200008 License plate recognition Easy Cam | Above ground



1691201023 Cable tunnel | for onground installations of Easy Tread



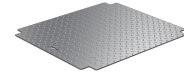
1691200009 License plate recognition Easy Cam | Inground



1691200010 Foundation frame for Easy Tread and VAS 741083 RDS



1691202069 Centre cover Easy Tread and VAS 741083 RDS



1691200022 Easy Tread - Connectivity Kit

