



EASY TREAD 2.0

Tyre Scanner Easy Tread 2.0 | Build your own device

Automatic tyre tread measurement system with crossing speed up to 8 km/h | Configure your own device for inground or onground installations

Article number: 1691200002

Description

NEW: Easy Tread 2.0 comes standard with a connectivity kit to digitize and automate your service lane:

- Live monitor of all crossings of multiple Easy Treads in the same workshop network
- 20% faster results
- Ready for ASA interface
- Simplified connection to dealer management systems and 3rd party systems
- Direct connection of monitors and TVs without using the browser
- Optimized statistic functions

The high weight and torque of electric vehicles causes enormous wear on tires and chassis components. The automatic tire diagnosis of every vehicle entering a workshop allows keeping the tire business inhouse and increasing customer loyalty by. The immediate evaluation of the tire wear pattern simultaneously generates service opportunities for wheel alignment and potentially ADAS calibration.

- The Easy Tread needs only few seconds to calculate the tyre's tread depths of a vehicle
- Clear display of tyre tread depth and wear information, within short time
- Recommended action are displayed (for the vehicle and/or the tyre)
- Crossing speed up to 8 km/h
- Can be integrated inground in the workshop
- High precision thanks to the larger wheel contact area.
- Browser-based measurement results on smart TV, PC or tablet computer
- No PC needed (can be however used to manage Customer-data, measuring data and statistics)
- Interface to connect the device in a customer owner system, where the data can be transferred for further processing (option)
- No moving parts (low maintenance)
- Quality from Germany

The tyres are the only contact points between a vehicle and the road. The quality of this bonds decides how safely the vehicle can be accelerated and braked. Especially aquaplaning can only be avoided by sufficient tread depth. This is why checking tread wear is a mandatory item of all statutory safety inspection. At the same time, uneven tread wear is a clear indication for a workshop that a wheel alignment should be considered - and that a wheel alignment check should be proposed to the customer.

Scope of delivery:

- Easy Tread modules (measurement modules, LAN cables, main switch box)
- Connectivity Kit

The ANPR camera to capture the license plates for every crossing needs to be ordered separately.

For inground installation an installation frame is required as well as a center cover, depending on whether an ANPR camera is used or not.

Onground installations require drive-over ramps.

Technical Data

Electrical connection	100 - 230 V 50 - 60 Hz 1 ph
Packaging length	850 mm
Packaging width	550 mm

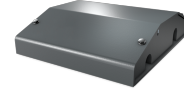
Packaging height	720 mm
Gross weight	120 kg
Tyre width max.	450 mm
Depth	1040 mm
Height	85 mm
Width	2245 mm
Maximum load per axle	4 t
Working temperature	0 - 40 °C
Track width	1080 - 1820 mm
Max. speed	8 km/h
Weight	110 kg
Packaging unit	1 Palette(n)
Accuracy	± 0,25 mm

Accessories

1691200008	License plate recognition Easy Cam Above ground	
1691202095	Centre cover Easy Tread Inground +200mm	
1691200027	License plate recognition Easy Cam Inground +200mm	
1691200028	Inground frame for Easy Tread and VAS 741083 RDS	
1691200042	Drive-over ramps kit for onground installations	
1691202039	Cable protection for onground installations without Easy Cam	
1691202069	Centre cover Easy Tread and VAS 741083 RDS	
1691200010	Foundation frame for Easy Tread and VAS 741083 RDS	
1691200009	License plate recognition Easy Cam Inground	
1691200023	PC trolley for Easy Tread	



1691201023 Cable tunnel | for onground installations of Easy Tread



1691200051 Automatic Cleaning Solution | Easy Tread

