



Q.LIGN 360

Wheel Aligner Q.Lign 360

Q.Lign 360 with extendable wall fixation and tablet operation for 360° space around the lift. Comes with Q.Grip wheel clamps and turntables.

Article number: 1690800012

Description

Ultimate productivity - vehicle after vehicle

The Q.Lign 360 builds on the existing Q.Lign platform and focuses entirely on wheel alignment. With Q.Lign 360, workshops raise the bar even higher to exploit their full service potential.

Measuring at the highest level

- Camera beam measures permanently from a height of 2.8 meters
- No motor, no winch, no wear and tear
- No up, no down, no injuries or damage
- No movement, no matter if short or long wheelbases

Everything perfectly in sight

- Four wheels, four cameras
- Separate camera for the rear axle for more accurate toe values on the front axle
- Install anywhere within 1.8 to 4,2 meters of the front axle
- Measure and adjust from 0 to 2 meters platform height at any time

Never run out of space again

- Fixation on the wall and direct tablet operation
- No trolley, no post that take up space
- Measure from 1,8 to 4,2m distance to the front axle
- Frees up space around the complete alignment bay

Work smarter, not harder

- Measurement starts directly with attachment of the targets to quickly determine accident vehicles
- All targets work on any wheel reduces setup times and setup errors
- Active MEMS Technology: Constant measurement against gravity for uncompromising accuracy
- Caster sweep at floor level without the need for a stool or ladder
- Access to clear and easy-to-understand PDF reports from anywhere inside your shop

The world's first web-based wheel aligner

- Eliminates need for trolley and PC and creates more space
- Incredibly efficient with up to 95% power savings compared to PC-based systems
- Stream-to-X: Access software on any TV, PC, laptop, tablet or smartphone
- Intuitive software, streamlined operations, more productivity
- Easy integration of Q.Lign into your shop's daily processes and systems

Full speed, without compromising on precision

- Powerful software with optimized workflow for the entire wheel alignment process
- Reduced runout process for more productivity
- 3D camera technology produces highly accurate realtime measurements

Space requirement

- Minimum height of 2800mm
- Minimum clearance of 2800mm on four-post lifts

Scope of delivery

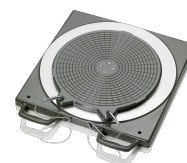
- Camera beam with 4 cameras
- Q.Lign display module
- 4x Q.Grip wheel clamps
- Wall storage for Q.Grips
- 4x targets with AutoID
- Tablet
- Brake lock and steering wheel lock
- Front turntables and filling bars
- Powerbox for power supply
- Extendable wall fixation
- Key Card for international vehicle specs

Technical Data

Electrical connection	90-264V 1Ph 47-63Hz
Measuring system	3D mit Messbalken (fixiert)
Packaging unit	1 Palette(n)
Space requirement width	2595 mm
Data transmission type	kabellos
Distance camera - center of turntable	1800 - 3300 mm
Clearance front posts of lift min.	2800 mm
Display size	10 "
Power consumption	45 W
Sensor count	4 Stück
Wheel base	1750 - 4600 mm
Set-up height	2800 mm

Accessories

1690501001 Mechanical aluminum turntable Standard



1690701508 Magnetic clamps for wheel bolts | 75mm



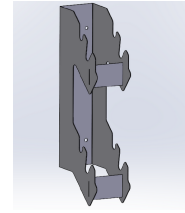
1690701521 Magnetic clamps for wheel bolts | 100mm



1690801048 Storage kit | for 4x Q.Grip



1690801047 Storage kit | for 4x MultiFit



1690801053 Wall mount | Q.Lign T-Series | 515-880mm



1690102211 Filling piece (1x) for aluminum turntable



1690101094 Mounting set for MultiFit (4x) | for wall installation



1690101090 Mounting set for OE quick clamps (4x) | for wall installation



1690101089 Mounting set for brake and steering wheel lock (2x) | for wall installation



1690101127 Accessory cart | for OE quick clamps



1690101129 Accessory cart | MultiFit clamps



1690002022 Vehicle database update Q.Lign | Key Card



1690101128 Accessory Cart | for Magnetic Clamps



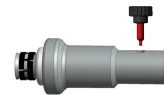
1690101092 Bracket set for magnetic clamps (4x) | for wall installation



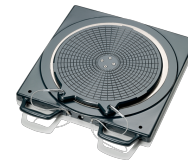
1690100001 ProClamp wheel clamp | 13 - 23" | 1 pc



8900380016 Self-centering quick clamp | for Lamborghini



1690401028 Mechanical aluminum turntable Precision



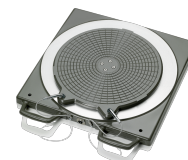
1690311112 Multi-Fit wheel clamp with standard claws | 13 - 22" | 4 pcs.



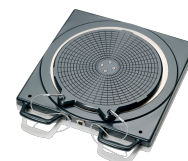
1690311113 Extension set for Multi-fit clamps | 23 - 28"



1690401011 Electronic aluminum turntable without connecting cable | Standard



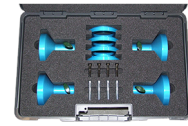
1690401013 Electronic aluminum turntable without connecting cable | Precision



1690301002 Central clamp Porsche Carrera GT



1690380002 Central clamp Porsche 911 GT3 and Turbo



1690380010 Self-centering quick clamp for Porsche



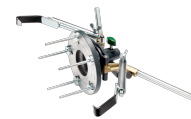
1690380161 Self-centering quick clamp for Tesla



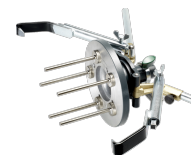
1690381299 Self-centering quick clamp for Ferrari



1690801002 Quick clamp Mercedes-Benz | OEM



1690801001 Quick clamp BMW | OEM



1690101010 Adapter set Q.Grip | for Q.Lign | 4 pcs.



1690301003 Self-centering quick clamp for Porsche



1690102041 Filling piece for aluminum precision turntable

