



**Q.LIGN T-SERIES**

## **Wheel Aligner Q.Lign T | with Q.Grip clamps**

Q.Lign T.41 with floor-mounted support column, turnplates and Q.Grip wheel clamps. Operation via 27" monitor. For wheel alignment professionals.

Article number: 1690800002

## Description

### Ultimate productivity - vehicle after vehicle

The T-Series builds on the existing Q.Lign platform and focuses entirely on wheel alignment. With Q.Lign T.41, workshops raise the bar even higher and can thus exploit their full service potential.

### Measuring at the highest level

- Camera beam measures permanently from a height of 2.8 meters
- No motor, no winch, no wear and tear
- No up, no down, no injuries or damage
- No movement, no matter if short or long wheelbases

### Everything perfectly in sight

- Four wheels, four cameras
- Separate camera for the rear axle for more accurate toe values on the front axle
- Install anywhere within 1.8 to 3.3 meters of the front axle
- Measure and adjust from 0 to 2 meters platform height at any time

### Work smarter, not harder

- All targets work on any wheel reduces setup times and setup errors
- Active MEMS Technology: Constant measurement against gravity for uncompromising accuracy
- Caster sweep at floor level without the need for a stool or ladder
- Access to clear and easy-to-understand PDF reports from anywhere inside your shop

### The world's first web-based wheel aligner

- Eliminates need for trolley and PC and creates more space
- Incredibly efficient with up to 95% power savings compared to PC-based systems
- Stream-to-X: Access software on any TV, PC, laptop, tablet or smartphone
- Intuitive software, streamlined operations, more productivity
- Easy integration of Q.Lign into your shop's daily processes and system

### Q.Grip clamps: the last step before Touchless

- 5x faster than conventional clamps
- No removal of hubcaps
- No scratching of rims
- From 21" to 33" in under a second, no know twisting

### Space requirement

- Minimum height of 2800mm
- Minimum clearance of 2800mm on four-post lifts

## Scope of delivery

- Camera beam with 4 cameras
- Column with tray
- Q.Lign display module
- 4x targets with AutoID
- 27" monitor, keyboard, mouse
- Brake lock and steering wheel lock
- Front turnplates and filling pieces

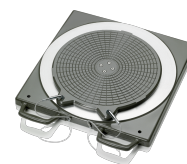
- Q.Grip clamps (525-835mm wheel diameter)
- Storage for Q.Grips
- Key Card for international vehicle specs

## Technical Data

Electrical connection	90-264V   1Ph   47-63Hz
Packaging length	2950 mm
Packaging width	820 mm
Packaging height	540 mm
Gross weight	170 kg
Measuring system	3D mit Messbalken (fixiert)
Weight	119 kg
Packaging unit	1
Data transmission type	kabellos
Distance camera - center of turntable	1800 - 3300 mm
Clearance front posts of lift min.	2800 mm
Display size	10 "
Max. clamping capacity	835 mm
Min. clamping capacity	525 mm
Power consumption	65 W
Set-up width	2595 mm
Sensor count	4 Stück
Wheel base	1750 - 4600 mm
Set-up height	2745 mm

## Accessories

1690501001 Mechanical aluminum turntable Standard



1690100001 ProClamp wheel clamp | 13 - 23" | 1 pc



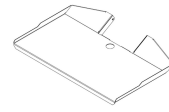
1690701508 Magnetic clamps for wheel bolts | 75mm



1690701521 Magnetic clamps for wheel bolts | 100mm



1690802049 Storage tray | Q.Lign T-Series



1690102211 Filling piece (1x) for aluminum turntable



1690101094 Mounting set for MultiFit (4x) | for wall installation



1690101090 Mounting set for OE quick clamps (4x) | for wall installation



1690101089 Mounting set for brake and steering wheel lock (2x) | for wall installation



1690101127 Accessory cart | for OE quick clamps



1690101129 Accessory cart | MultiFit clamps



1690002022 Vehicle database update Q.Lign | Key Card



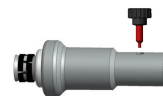
1690101128 Accessory Cart | for Magnetic Clamps



1690101092 Bracket set for magnetic clamps (4x) | for wall installation



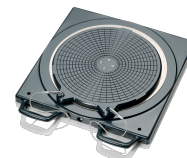
8900380016 Self-centering quick clamp | for Lamborghini



ASE 485 232 00 000 Self-centering quick clamp VAS 6829 for Porsche



1690401028 Mechanical aluminum turntable Precision



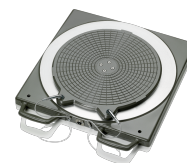
1690311112 Multi-Fit wheel clamp with standard claws | 13 - 22" | 4 pcs.



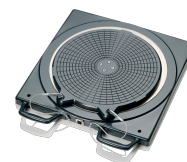
1690311113 Extension set for Multi-fit clamps | 23 - 28"



1690401011 Electronic aluminum turntable without connecting cable | Standard



1690401013 Electronic aluminum turntable without connecting cable | Precision

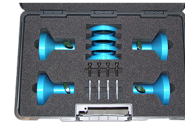


1690301002 Central clamp Porsche Carrera GT



---

ASE 485 233 00 000 Central clamp VAS 6830 Porsche 911 GT3 and Turbo



---

ASE 485 237 00 000 Self-centering quick clamp VAS 6918 for Porsche



---

1690380161 Self-centering quick clamp for Tesla



---

1690381299 Self-centering quick clamp for Ferrari



---

1690801002 Quick clamp Mercedes-Benz | OEM



---

1690801001 Quick clamp BMW | OEM



---

1690101010 Adapter set Q.Grip | for Q.Lign | 4 pcs.



---

1690102041 Filling piece for aluminum precision turntable

