



Q.LIGN 360

Wheel Aligner Q.Lign 360 | Kit

Q.Lign T.41 as kit version for wall mounting and tablet operation for 360° access to the lift. For customized customer solutions. Without wheel clamps and turntables.

Article number: 1690800000

Description

Ultimate productivity - vehicle after vehicle

The T-Series builds on the existing Q.Lign platform and focuses entirely on wheel alignment. With Q.Lign T.41, workshops raise the bar even higher and can thus exploit their full service potential.

Measuring at the highest level

- Camera beam measures permanently from a height of 2.8 meters
- No motor, no winch, no wear and tear
- No up, no down, no injuries or damage
- No movement, no matter if short or long wheelbases

Everything perfectly in sight

- Four wheels, four cameras
- Separate camera for the rear axle for more accurate toe values on the front axle
- Install anywhere within 1.8 to 3.3 meters of the front axle
- Measure and adjust from 0 to 2 meters platform height at any time

Work smarter, not harder

- Measurement starts directly with attachment of the targets to quickly determine accident vehicles
- All targets work on any wheel reduces setup times and setup errors
- Active MEMS Technology: Constant measurement against gravity for uncompromising accuracy
- Caster sweep at floor level without the need for a stool or ladder
- Access to clear and easy-to-understand PDF reports from anywhere inside your shop

The world's first web-based wheel aligner

- Eliminates need for trolley and PC and creates more space
- Incredibly efficient with up to 95% power savings compared to PC-based systems
- Stream-to-X: Access software on any TV, PC, laptop, tablet or smartphone
- Intuitive software, streamlined operations, more productivity
- Easy integration of Q.Lign into your shop's daily processes and systems

Full speed, without compromising on precision

- Powerful software with optimized workflow for the entire wheel alignment process
- Reduced runout process for more productivity
- 3D camera technology produces highly accurate realtime measurements

Space requirement

- Minimum height of 2800mm
- Minimum clearance of 2800mm on four-post lifts

Scope of delivery

- Camera beam with 4 cameras
- Q.Lign display module
- 4x targets with AutoID
- Tablet
- Brake lock and steering wheel lock
- Powerbox for power supply
- Key Card for international vehicle specs

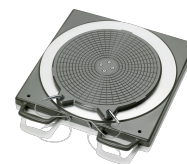
Note: For the kit version, turnplates and wheel clamps must be ordered separately, depending on customer requirements.

Technical Data

Electrical connection	90-264V 1Ph 47-63Hz
Packaging length	2960 mm
Packaging width	860 mm
Packaging height	480 mm
Gross weight	60 kg
Measuring system	3D mit Messbalken (fixiert)
Weight	60 kg
Packaging unit	1
Space requirement width	2595 mm
Data transmission type	kabellos
Distance camera - center of turntable	1800 - 3300 mm
Clearance front posts of lift min.	2800 mm
Display size	10 "
Power consumption	45 W
Sensor count	4 Stück
Wheel base	1750 - 4600 mm
Set-up height	2800 mm

Accessories

1690501001 Mechanical aluminum turntable Standard



1690701508 Magnetic clamps for wheel bolts | 75mm

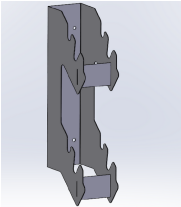
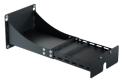








1690701521 Magnetic clamps for wheel bolts | 100mm



1690801048 Storage kit | for 4x Q.Grip



1690801047	Storage kit for 4x MultiFit	
1690801053	Wall mount Q.Lign T-Series 515-880mm	
1690102211	Filling piece (1x) for aluminum turntable	
1690101094	Mounting set for MultiFit (4x) for wall installation	
1690101090	Mounting set for OE quick clamps (4x) for wall installation	
1690101089	Mounting set for brake and steering wheel lock (2x) for wall installation	
1690101127	Accessory cart for OE quick clamps	
1690101129	Accessory cart MultiFit clamps	
1690002022	Vehicle database update Q.Lign Key Card	
1690101128	Accessory Cart for Magnetic Clamps	



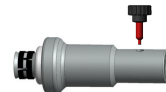
1690101092 Bracket set for magnetic clamps (4x) | for wall installation



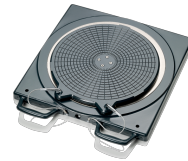
1690100001 ProClamp wheel clamp | 13 - 23" | 1 pc



8900380016 Self-centering quick clamp | for Lamborghini



1690401028 Mechanical aluminum turntable Precision



1690311112 Multi-Fit wheel clamp with standard claws | 13 - 22" | 4 pcs.



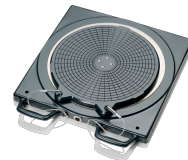
1690311113 Extension set for Multi-fit clamps | 23 - 28"



1690401011 Electronic aluminum turntable without connecting cable | Standard



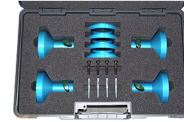
1690401013 Electronic aluminum turntable without connecting cable | Precision



1690301002 Central clamp Porsche Carrera GT



ASE 485 233 00 000 Central clamp VAS 6830 Porsche 911 GT3 and Turbo



ASE 485 237 00 000 Self-centering quick clamp VAS 6918 for Porsche



1690380161 Self-centering quick clamp for Tesla



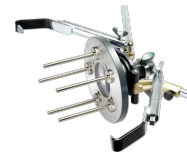
1690381299 Self-centering quick clamp for Ferrari



1690801002 Quick clamp Mercedes-Benz | OEM



1690801001 Quick clamp BMW | OEM



1690101010 Adapter set Q.Grip | for Q.Lign | 4 pcs.



ASE 485 232 00 000 Self-centering quick clamp VAS 6829 for Porsche



1690102041 Filling piece for aluminum precision turntable

