



EASY CCD

Wheel Aligner Easy CCD+ | Kit Version

Easy CCD+ Kit Version | CCD wheel alignment Kit Version, ideal for existing alignment bays!

Article number: 1690310071

Description

Perfectly integrated into ADAS calibration and head light testing:

- The space in front of the lift can be used for ADAS calibration boards and head light tester
- Permanent self-check and precise ADAS calibration jig orientation to the thrust vehicle's thrust angle
- No need for extra cameras, cables, or clamps required for ADAS calibration

Best in class: +/- 2 minute accuracy:

- 360° measurement field for permanent self-check and adjustment of system to movement and vibrations
- Rolling runout compensation eliminates time-consuming raising of vehicle and single-wheel compensation
- No calibration to a specific lift allows a measurement on any wheel alignment bay
- Wireless data transfer and integrated battery enable full mobility and allow the use of Windows tablets or Laptops
- Intelligent and space-saving charging solution that can be mounted on any wall
- Quality made in Germany

Scope of delivery

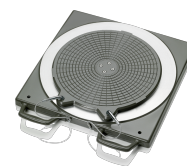
- Sensor head with encoder and battery power
- +Software with SmartTest for direct reception and ADAS calibration Option
- Charging pods
- Vehicle specs database

Technical Data

Operating temperature	5 - 40 °C
Storage temperature	-20 - 60 °C
Packaging length	850 mm
Packaging width	550 mm
Packaging height	820 mm
Gross weight	42 kg
Relative humidity, use	(40 °C) 10 - 90
Weight	27 kg

Accessories

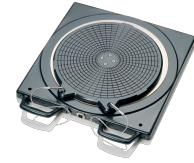
1690501001 Mechanical aluminum turntable Standard



1690401007 Steering wheel holder



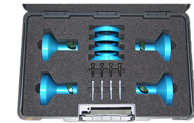
1690401013 Electronic aluminum turntable without connecting cable | Precision



1690301002 Central clamp Porsche Carrera GT



1690380002 Central clamp Porsche 911 GT3 and Turbo



1690380010 Self-centering quick clamp for Porsche



1690380161 Self-centering quick clamp for Tesla



1690381299 Self-centering quick clamp for Ferrari



1690801002 Quick clamp Mercedes-Benz | OEM



1690801001 Quick clamp BMW | OEM



1690801007 Distance bolts for quick clamp Mercedes Benz | 100 mm



1690801003 Distance bolts for quick clamp BMW | 120 mm



1690401019 Distance bolts for quick clamp Mercedes Benz and BMW | 125 mm



1690301004 Precision spoiler adapter Porsche



1693600001 Toe press bar for Mercedes Benz



1693740001 Ballast bag 5 kg



1690401006 Brake pedal depressor



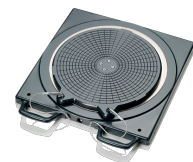
1690401012 Cable set



1690121001 Spoiler adapter 100 mm



1690401028 Mechanical aluminum turntable Precision



1690311112 Multi-Fit wheel clamp with standard claws | 13 - 22" | 4 pcs.



1690311089 Multi-Fit wheel clamp with standard claws | 13 - 22" | 1pc.



1690311113 Extension set for Multi-fit clamps | 23 - 28"



1690311164 Set softline claws for 1 x Multi-fit clamp | Softline rims



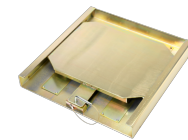
1690311115 Set truck claws for 1 x Multi-fit clamp | Truck



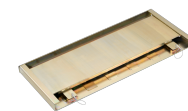
1690311146 Wallboard for sensor heads



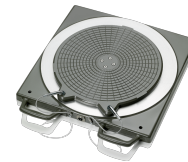
1690401003 Sliding plate for rear axle | short



1690401004 Sliding plate for rear axle | long



1690401011 Electronic aluminum turntable without connecting cable | Standard


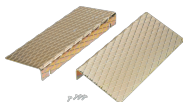



1690403001 Connecting cable for electronic turntables



1690402001 Protective rubber cover for aluminum turntable



1690701052	Drive-on ramps for two aluminum turntables	
1690401008	Drive-on ramps for turntables and sliding plates	
1690401005	Spoiler adapter 50 mm	
1693740003	Ballast bag 20 kg	