



WHEEL ALIGNMENT

Wheel Aligner BMW Q.Lign | for BMW | with Magnetic Clamps

Officially Approved Wheel Aligner by BMW

Article number: 1690200027

Description

The World's most innovative Wheel aligner

The BMW Q.Lign is our answer to an increasingly digital and fast-paced world: ultra-fast, compact, connected

Measured values displayed on a trolley? That's yesterday

- Display on Tablet, TV, PC, or Smartphone!
- No PC-trolley: image processing directly inside the sensor head
- No printer: reports available as PDF files directly on the network

Measurement values? Wherever you need them

- Camber, caster, toe on four small screens in the visible area directly under the vehicle
- Two hands free for adjustments and the values always in sight
- Stand up tall and make adjustments in any lift position, not just one

Wheel alignment? Made easy

- Use any target on any wheel to reduce setup times and errors
- Caster sweep without a ladder or stool, conveniently with the lift on floor level
- Intuitive software processes and menus
- Permanent left-right reference for guaranteed straight steering wheels

Space problem? No problem

- Permanently space in front of the lift
- Fits on any alignment lift
- Wireless and battery-powered
- More space in the workshop with BMW Q.Lign

Electronic steering wheel level integration directly into the software

- The steering wheel position is measured digitally, for clear results – measurable and fully traceable.
- The steering wheel position is continuously monitored digitally, even when the vehicle is lifted.
- The measured steering wheel position is automatically recorded in the printout. More transparency, less guesswork.

Automatic ride height measurement

- No manual measurement of ride heights
- No typing each height value

- No time-consuming loading and unloading of the vehicle with weights

Work smarter, not harder

- Get values the second the targets are recognized to immediately spot vehicles involved in accidents
- Measure with any target on any wheel position to save time and eliminate user error
- Active lift control: Our recipe for success for straight steering wheels
- Have the values always in sight from under the vehicle with the four OLED screens on the sensor heads

Scope of delivery

- 2x BMW Q.Lign sensor heads with OLED displays
- Display module for direct streaming to TV, PC, laptop or tablet
- Tablet
- 2x Li-Ion batteries with charging station
- 4x Magnetic clamps | 100mm
- Wall-brackets for magnetic clamps
- 4 targets
- Lift adapter
- Wall board for storage of sensor heads and battery charger
- Steering wheel and brake pedal lock
- 2x electronic turntables
- 2x turntable covers
- 4x turntable fillers
- 2x connecting cable for turntable
- BMW Group vehicle specs
- IAM vehicle specs
- Electronic steering wheel level
- Ride height markers with transport case

Note: The delivery scope includes turntables for the front axle only. For alignment lifts without installed slip plates for the rear axle, two additional turntables (1 690 401 028) are required for the rear axle. When using the magnetic clamps, each turntable must be equipped with two filler pieces for rolling rim runout compensation.

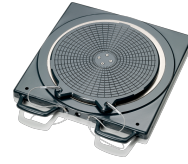
Technical Data

Electrical connection	90-264V 1Ph 47-63Hz
Packaging length	1080 mm
Packaging width	960 mm
Packaging height	900 mm
Gross weight	100 kg
Measuring system	3D
Weight	80 kg
Packaging unit	1 Palette(n)
Data transmission type	kabellos
Power consumption	45 W
Accumulator power (electric charge)	99 Wh
Load capacity per turntable	2000 kg

Wheel base 1800 - 5000 mm

Accessories

1690401028 Mechanical aluminum turntable Precision



1690201152 Trolley with 27" monitor | for BMW Q.Lign



1693770683 Steering Wheel Level Gauge | Bluetooth



1690002022 Vehicle database update Q.Lign | Key Card



1690102211 Filling piece (1x) for aluminum turntable



1690701521 Magnetic clamps for wheel bolts | 100mm



1693770415 Printer for Beissbarth trolleys



1690203053 Battery for Q.Lign | Li-Ion | 99 Wh



1690801003 Distance bolts for quick clamp BMW | 120 mm



1690801001 Quick clamp BMW | OEM



1690402001 Protective rubber cover for aluminum turntable



1690202173 Lift Adaptation Extension (1x) | for wide vehicles on narrow lifts

