



WHEEL ALIGNMENT

Wheel Aligner VAS 701 011| for Porsche

Officially approved wheel aligner customized for Porsche.

Article number: 1690200021

Description

The World's most innovative Wheel aligner

VAS 701 011 is our answer to an increasingly digital and fast-paced world: ultra-fast, compact, connected

World's First Web-based wheel aligner

- Compact web-based technology creates more space by replacing the need for trolley with PC
- Stream-to-X: Directly display the software on any TV, PC, laptop or smartphone
- Unleash the full power of connectivity by integrating the VAS 701 011 into your daily workshop processes and systems

Full mobility, infinite possibilities

- Completely wireless thanks to high performance Li-Ion batteries
- Installation on any alignment lift type, above and inground
- Runout compensation in any lift height, from zero to top position
- Permanently use the space in front of the lift for headlight testing and ADAS calibration

Work smarter, not harder

- Get values the second the targets are recognized to immediately spot vehicles involved in accidents
- Measure with any target on any wheel position to save time and eliminate user error
- Active lift control: Our recipe for success for straight steering wheels
- Have the values always in sight from under the vehicle with the four OLED screens on the sensor heads

Putting the customer first

- Easy to understand printouts
- Theme-based printouts (e.g. accident report) instead of one size fits all
- Measurement of all common wheel alignment angles, including vehicle dimensions for easy detection of vehicles involved in accidents

Direct integration of the VAS 701 009 wheel load scales

- Realtime wheel load in the wheel alignment program
- Live display of the cross-load distribution during the entire alignment
- Wheel load distribution and wheel alignment in one step instead of two
- Direct integration of the VAS 701 009 wheel load scales

Scope of delivery

- 2x VAS 701 011 sensor heads with OLED displays
- Display module for direct streaming to TV, PC, laptop or tablet
- Tablet
- 2x Li-Ion batteries with charging station
- 4 targets
- Wall storage for wheel clamps
- Lift adapter
- Wall board for storage of sensor heads and battery charger
- Steering wheel and brake pedal lock
- 4x filling pieces for turntables
- 2x connecting cable for turntable
- Key Card VAS6767/2

- Key Card vehicle specs

Note: The scope of delivery does not include wheel clamps and turntables. For Porsche vehicles, the self-centering central locking adapters VAS 6918, V.A.G 6830 or V.A.G 6828 should be used. For weighing vehicles during wheel aligner operation, the turning plates VAS 701 009 should be used.

Technical Data

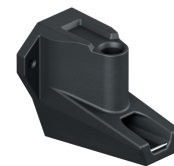
Electrical connection	90-264V 1Ph 47-63Hz
Packaging length	1080 mm
Packaging width	960 mm
Packaging height	900 mm
Gross weight	100 kg
Measuring system	3D
Weight	80 kg
Packaging unit	1 Palette(n)
Data transmission type	kabellos
Power consumption	45 W
Accumulator power (electric charge)	99 Wh
Min. tyre size	525 mm
Max. tyre size	835 mm
Load capacity per turntable	2000 kg
Wheel base	1800 - 4500 mm

Accessories

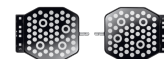
1690202173 Lift Adaptation Extension (1x) | for wide vehicles on narrow lifts



1690101077 Set 4x wall bracket | Q.Grip



1690201131 VAS 701011/2 | ADAS target boards | for VAS 701011



1690101084 VAS 701011/1 | Set 2x Magnetic clamp for VW Crafter | 130mm & 205mm bolt circles



1690801048 Storage kit | for 4x Q.Grip



1690202155 Dust cover target board | Q.Lign



1690701521 Magnetic clamps for wheel bolts | 100mm



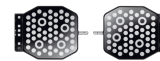
1690701508 Magnetic clamps for wheel bolts | 75mm



1690400100 RaceScales | VAS 701009 | Precision turntable with load cells | 433Mhz



1690200013 ADAS target boards | for Q.Lign



1690101010 Adapter set Q.Grip | for Q.Lign | 4 pcs.



1690201055 Trolley with 27" monitor | for Q.Lign



1693770415 Printer for Beissbarth trolleys



1690201122 Inground lift adaptation | for Q.Lign | 1x



1690101094	Mounting set for MultiFit (4x) for wall installation	
1690101090	Mounting set for OE quick clamps (4x) for wall installation	
1693770634	Mouse and keyboard Wireless	
1693740003	Ballast bag 20 kg	
1693740001	Ballast bag 5 kg	
1692000156	Wheel chock set 2 pcs.	
1690102041	Filling piece for aluminum precision turntable	
1690102231	Inclinometer and steering wheel level Mercedes-Benz	
1690101092	Bracket set for magnetic clamps (4x) for wall installation	
1690101128	Accessory Cart for Magnetic Clamps	
1690002022	Vehicle database update Q.Lign Key Card	

1690101129	Accessory cart MultiFit clamps	
1690101127	Accessory cart for OE quick clamps	
1690101089	Mounting set for brake and steering wheel lock (2x) for wall installation	
1690201054	Wall board for Q.Lign	
1693770644	Tablet Android 10.1 "	
1690380002	Central clamp Porsche 911 GT3 and Turbo	
1690301002	Central clamp Porsche Carrera GT	
1690401013	Electronic aluminum turntable without connecting cable Precision	
1690401008	Drive-on ramps for turntables and sliding plates	
1690701052	Drive-on ramps for two aluminum turntables	
1690402001	Protective rubber cover for aluminum turntable	

1690403001	Connecting cable for electronic turntables	
1690401011	Electronic aluminum turntable without connecting cable Standard	
1690311115	Set truck claws for 1 x Multi-fit clamp Truck	
1690311164	Set softline claws for 1 x Multi-fit clamp Softline rims	
1690311113	Extension set for Multi-fit clamps 23 - 28"	
1690311089	Multi-Fit wheel clamp with standard claws 13 - 22" 1pc.	
1690380010	Self-centering quick clamp for Porsche	
1690380161	Self-centering quick clamp for Tesla	
1690381299	Self-centering quick clamp for Ferrari	
1690201035	Lift adaptation for Q.Lign	



1690201030 Emergency power box for Q.Lign



1693770648 Power supply for Q.Lign Accessories | 19 V RRC

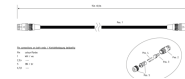
1690203053 Battery for Q.Lign | Li-Ion | 99 Wh



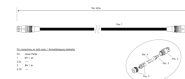
1690201069 Duo-battery charging station for Q.Lign | incl. accessories



1690203041 Power connection cable 15 m



1690203025 Power connection cable 10 m



1690401019 Distance bolts for quick clamp Mercedes Benz and BMW | 125 mm



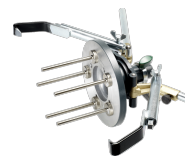
1690801003 Distance bolts for quick clamp BMW | 120 mm



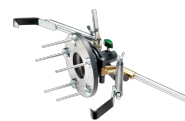
1690801007 Distance bolts for quick clamp Mercedes Benz | 100 mm



1690801001 Quick clamp BMW | OEM



1690801002 Quick clamp Mercedes-Benz | OEM



1690311112 Multi-Fit wheel clamp with standard claws | 13 - 22" | 4 pcs.

