



Q.LIGN

Wheel Aligner Q.Lign | Compact Air

Web-based 3D wheel aligner. Without clamps or turnplates. Optimized for air transport.

Article number: 1690200015

Description

The World's most innovative Wheel aligner

Q.Lign is our answer to an increasingly digital and fast-paced world: ultra fast, compact, connected

World's First Web-based wheel aligner

- Compact web-based technology creates more space by replacing the need for trolley with PC
- Stream-to-X: Directly display the software on any TV, PC, laptop or smartphone
- Unleash the full power of connectivity by integrating Q.Lign into your daily workshop processes and systems

Get all the speed you want without compromising on accuracy

- Ultra fast software with optimized workflow of the complete alignment process
- New shortened runout procedure for increased productivity
- High precision 3D camera technology provides real-time values

Full mobility, infinite possibilities

- Completely wireless thanks to high performance Li-Ion batteries
- Installation on any alignment lift type, above and inground
- Runout compensation in any lift height, from zero to top position
- Permanently use the space in front of the lift for headlight testing and ADAS calibration

Work smarter, not harder

- Get values the second the targets are recognized to immediately spot vehicles involved in accidents
- Measure with any target on any wheel position to save time and eliminate user error
- Active lift control: Our recipe for success for straight steering wheels
- Have the values always in sight from under the vehicle with the four OLED screens on the sensor heads

Putting the customer first

- Easy to understand printouts
- Theme-based printouts (e.g. accident report) instead of one size fits all
- Measurement of all common wheel alignment angles, including vehicle dimensions for easy detection of vehicles involved in accidents

Scope of delivery

- 2 compact Q.Lign sensor heads with OLED displays
- Display module for direct streaming to TV, PC, laptop or tablet
- 2x Li-Ion 99.4Wh batteries
- Tablet
- 4 targets with auto-identification
- Lift adaption
- Duo battery charger
- Steering wheel lock and brake lock
- Key Card for international vehicle specs

Please note: Not a complete wheel aligner. Turnplates and wheel clamps need to be provided separately.

Technical Data

| | |
|-------------------------------------|---------------------------------|
| Electrical connection | 100 - 230 V 50 - 60 Hz 1 ph |
| Packaging length | 860 mm |
| Packaging width | 560 mm |
| Packaging height | 900 mm |
| Gross weight | 50 kg |
| Measuring system | 3D |
| Weight | 39 kg |
| Packaging unit | 1 Palette(n) |
| Data transmission type | kabellos |
| Accumulator power (electric charge) | 99 Wh |
| Max. wheel base | 5000 mm |

Accessories

1690202173 Lift Adaptation Extension (1x) | for wide vehicles on narrow lifts



1690101094 Mounting set for MultiFit (4x) | for wall installation



1690801048 Storage kit | for 4x Q.Grip



1690202155 Dust cover target board | Q.Lign



1690701521 Magnetic clamps for wheel bolts | 100mm



1690701508 Magnetic clamps for wheel bolts | 75mm



| | | |
|------------|---|---|
| 1690200013 | ADAS target boards for Q.Lign |  |
| 1690101010 | Adapter set Q.Grip for Q.Lign 4 pcs. |  |
| 1690201055 | Trolley with 27" monitor for Q.Lign |  |
| 1693770415 | Printer for Beissbarth trolleys |  |
| 1690201054 | Wall board for Q.Lign |  |
| 1693770644 | Tablet Android 10.1" |  |
| 1690101090 | Mounting set for OE quick clamps (4x) for wall installation |  |
| 1690101089 | Mounting set for brake and steering wheel lock (2x) for wall installation |  |
| 1693770634 | Mouse and keyboard Wireless |  |
| 1693740003 | Ballast bag 20 kg |  |
| 1693740001 | Ballast bag 5 kg | |



1692000156 Wheel chock set 2 pcs.



1690102041 Filling piece for aluminum precision turntable



1690102231 Inclinometer and steering wheel level | Mercedes-Benz



1690101092 Bracket set for magnetic clamps (4x) | for wall installation



1690101128 Accessory Cart | for Magnetic Clamps



1690002022 Vehicle database update Q.Lign | Key Card



1690101129 Accessory cart | MultiFit clamps



1690101127 Accessory cart | for OE quick clamps



1690201035 Lift adaptation for Q.Lign



1690201030 Emergency power box for Q.Lign

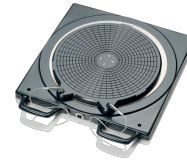


1693770648 Power supply for Q.Lign Accessories | 19 V RRC

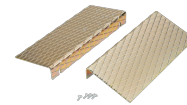
1690301002 Central clamp Porsche Carrera GT



1690401013 Electronic aluminum turntable without connecting cable | Precision



1690401008 Drive-on ramps for turntables and sliding plates



1690701052 Drive-on ramps for two aluminum turntables



1690402001 Protective rubber cover for aluminum turntable



1690403001 Connecting cable for electronic turntables



1690401011 Electronic aluminum turntable without connecting cable | Standard



1690311115 Set truck claws for 1 x Multi-fit clamp | Truck



1690311164 Set softline claws for 1 x Multi-fit clamp | Softline rims



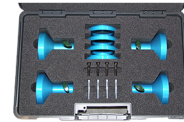
1690311113 Extension set for Multi-fit clamps | 23 - 28"



1690311089 Multi-Fit wheel clamp with standard claws | 13 - 22" | 1pc.



1690380002 Central clamp Porsche 911 GT3 and Turbo



1690380010 Self-centering quick clamp for Porsche



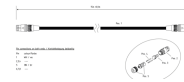
1690203053 Battery for Q.Lign | Li-Ion | 99 Wh



1690201069 Duo-battery charging station for Q.Lign | incl. accessories



1690203041 Power connection cable 15 m



1690203025 Power connection cable 10 m



1690401019 Distance bolts for quick clamp Mercedes Benz and BMW | 125 mm



1690801003 Distance bolts for quick clamp BMW | 120 mm



1690801007 Distance bolts for quick clamp Mercedes Benz | 100 mm



1690801001 Quick clamp BMW | OEM



1690801002 Quick clamp Mercedes-Benz | OEM



1690381299 Self-centering quick clamp for Ferrari



1690380161 Self-centering quick clamp for Tesla



1690311112 Multi-Fit wheel clamp with standard claws | 13 - 22" | 4 pcs.

