



**WHEEL ALIGNMENT**

## **Wheel Aligner VAS 701 011| for Volkswagen**

Officially approved wheel aligner by the complete Volkswagen Group.

Article number: 1690200011

## Description

### The World's most innovative Wheel aligner

VAS 701 011 is our answer to an increasingly digital and fast-paced world: ultra-fast, compact, connected

### World's First Web-based wheel aligner

- Compact web-based technology creates more space by replacing the need for trolley with PC
- Stream-to-X: Directly display the software on any TV, PC, laptop or smartphone
- Unleash the full power of connectivity by integrating the VAS 701 011 into your daily workshop processes and systems

### Get all the speed you want without compromising on accuracy

- Ultra-fast software with optimized workflow of the complete alignment process
- Q.Grip wheel clamps mounted in seconds, without any rim contact

### Full mobility, infinite possibilities

- Completely wireless thanks to high performance Li-Ion batteries
- Installation on any alignment lift type, above and inground
- Runout compensation in any lift height, from zero to top position
- Permanently use the space in front of the lift for headlight testing and ADAS calibration

### Work smarter, not harder

- Get values the second the targets are recognized to immediately spot vehicles involved in accidents
- Measure with any target on any wheel position to save time and eliminate user error
- Active lift control: Our recipe for success for straight steering wheels
- Have the values always in sight from under the vehicle with the four OLED screens on the sensor heads

### Putting the customer first

- Easy to understand printouts
- Theme-based printouts (e.g. accident report) instead of one size fits all
- Measurement of all common wheel alignment angles, including vehicle dimensions for easy detection of vehicles involved in accidents

### Direct integration of the VAS 701 009 wheel load scales

- Realtime wheel load in the wheel alignment program
- Live display of the cross-load distribution during the entire alignment
- Wheel load distribution and wheel alignment in one step instead of two
- Direct integration of the VAS 701 009 wheel load scales

### Scope of delivery:

- 2x VAS 701 011 sensor heads with OLED displays
- Display module for direct streaming to TV, PC, laptop or tablet
- Tablet
- 2x Li-Ion batteries with charging station
- 4x Q.Grips
- 4 targets
- Wall storage for wheel clamps
- Lift adapter

- Wall board for storage of sensor heads and battery charger
- Steering wheel and brake pedal lock
- 2x electronic turntables
- 4x filling pieces for turntables
- 2x connecting cable for turntable
- Key Card VAS6767/2
- Key Card vehicle specs

ASE number: ASE70101190000

## Technical Data

Electrical connection	90-264V   1Ph   47-63Hz
Packaging length	1080 mm
Packaging width	960 mm
Packaging height	900 mm
Gross weight	100 kg
Measuring system	3D
Weight	80 kg
Packaging unit	1 Palette(n)
Data transmission type	kabellos
Power consumption	45 W
Accumulator power (electric charge)	99 Wh
Min. tyre size	525 mm
Max. tyre size	835 mm
Load capacity per turntable	2000 kg
Wheel base	1800 - 4500 mm

## Accessories

1690202173 Lift Adaptation Extension (1x) | for wide vehicles on narrow lifts



1690101077 Set 4x wall bracket | Q.Grip



1690201131 VAS 701011/2 | ADAS target boards | for VAS 701011



1690101084 VAS 701011/1 | Set 2x Magnetic clamp for VW Crafter | 130mm & 205mm bolt circles



1690102211	Filling piece (1x) for aluminum turntable	
1690801048	Storage kit   for 4x Q.Grip	
1690202155	Dust cover target board   Q.Lign	
1690701521	Magnetic clamps for wheel bolts   100mm	
1690701508	Magnetic clamps for wheel bolts   75mm	
1690400100	RaceScales   VAS 701009   Precision turntable with load cells   433Mhz	
1690200013	ADAS target boards   for Q.Lign	
1690101010	Adapter set Q.Grip   for Q.Lign   4 pcs.	
1690201055	Trolley with 27" monitor   for Q.Lign	
1690201122	Inground lift adaptation   for Q.Lign   1x	



1690101094 Mounting set for MultiFit (4x) | for wall installation



1690101090 Mounting set for OE quick clamps (4x) | for wall installation



1693770634 Mouse and keyboard | Wireless



1693740003 Ballast bag 20 kg



1693740001 Ballast bag 5 kg



1692000156 Wheel chock set 2 pcs.



1690102041 Filling piece for aluminum precision turntable



1690102231 Inclinator and steering wheel level | Mercedes-Benz



1690101092 Bracket set for magnetic clamps (4x) | for wall installation



1690101128 Accessory Cart | for Magnetic Clamps



1690002022 Vehicle database update Q.Lign | Key Card



1690101129 Accessory cart | MultiFit clamps



1690101127 Accessory cart | for OE quick clamps



1690101089 Mounting set for brake and steering wheel lock (2x) | for wall installation



1693770415 Printer for Beissbarth trolleys



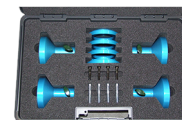
1690201054 Wall board for Q.Lign



1693770644 Tablet | Android | 10.1"



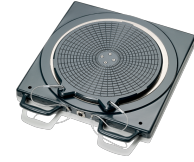
1690380002 Central clamp Porsche 911 GT3 and Turbo



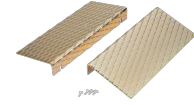
1690301002 Central clamp Porsche Carrera GT



1690401013 Electronic aluminum turntable without connecting cable | Precision



1690401008 Drive-on ramps for turntables and sliding plates



1690701052 Drive-on ramps for two aluminum turntables



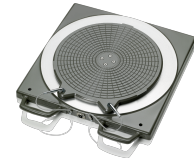
1690402001 Protective rubber cover for aluminum turntable



1690403001 Connecting cable for electronic turntables



1690401011 Electronic aluminum turntable without connecting cable | Standard



1690311115 Set truck claws for 1 x Multi-fit clamp | Truck



1690311164 Set softline claws for 1 x Multi-fit clamp | Softline rims



1690311113 Extension set for Multi-fit clamps | 23 - 28"



1690311089 Multi-Fit wheel clamp with standard claws | 13 - 22" | 1pc.



1690380010 Self-centering quick clamp for Porsche



1690380161 Self-centering quick clamp for Tesla



1690381299 Self-centering quick clamp for Ferrari



1690201035 Lift adaptation for Q.Lign



1690201030 Emergency power box for Q.Lign



1693770648 Power supply for Q.Lign Accessories | 19 V RRC

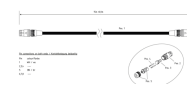
1690203053 Battery for Q.Lign | Li-Ion | 99 Wh



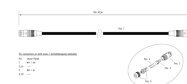
1690201069 Duo-battery charging station for Q.Lign | incl. accessories



1690203041 Power connection cable 15 m



1690203025 Power connection cable 10 m







1690401019 Distance bolts for quick clamp Mercedes Benz and BMW | 125 mm



1690801003 Distance bolts for quick clamp BMW | 120 mm



---

1690801007	Distance bolts for quick clamp Mercedes Benz   100 mm	
1690801001	Quick clamp BMW   OEM	
1690801002	Quick clamp Mercedes-Benz   OEM	
1690311112	Multi-Fit wheel clamp with standard claws   13 - 22"   4 pcs.	

---