



Q.LIGN

Wheel Aligner Q.Lign | Excellence

Web-based 3D wheel aligner with Q.Grips without rim contact and Auto ID target boards

Article number: 1690200002

Description

The World's most innovative Wheel aligner

Q.Lign is our answer to an increasingly digital and fast-paced world: ultra fast, compact, connected

World's First Web-based wheel aligner

- Compact web-based technology generates results instantly
- Stream-to-X: Directly display the software on any TV, PC, laptop or smartphone
- Unleash the full power of connectivity by integrating Q.Lign into your daily workshop processes and systems

Get all the speed you want without compromising on accuracy

- Ultra fast software with optimized workflow of the complete alignment process
- Q.Grip wheel clamps mounted in seconds, without any rim contact

Full mobility, infinite possibilities

- Completely wireless thanks to high performance Li-Ion batteries
- Installation on any alignment lift type, above and inground
- Runout compensation in any lift height, from zero to top position
- Permanently use the space in front of the lift for headlight testing and ADAS calibration

Work smarter, not harder

- Get values the second the targets are recognized to immediately spot vehicles involved in accidents
- Measure with any target on any wheel position to save time and eliminate user error
- Active lift control: Our recipe for success for straight steering wheels
- Have the values always in sight from under the vehicle with the four OLED screens on the sensor heads

Putting the customer first

- Easy to understand printouts
- Theme-based printouts (e.g. accident report) instead of one size fits all
- Measurement of all common wheel alignment angles, including vehicle dimensions for easy detection of vehicles involved in accidents

Scope of delivery

- 2 compact Q.Lign sensor heads with OLED displays
- Trolley with display module, 27" monitor and printer
- 2 Li-Ion batteries with charging station
- 4 Q.Grips without rim contact
- 4 targets with auto-identification
- New Generation Software
- Key Card for international vehicle specs
- Wall brackets for Q.Grips and targets
- Lift adaption
- Steering wheel and brake pedal lock
- Front turnplates

Technical Data

Packaging length	1150 mm
Packaging width	1200 mm
Packaging height	1600 mm
Gross weight	195 kg
Measuring system	3D
Weight	165 kg
Packaging unit	1 Palette(n)
Data transmission type	kabellos
Accumulator power (electric charge)	99 Wh
Min. tyre size	525 mm
Max. tyre size	835 mm
Max. wheel base	5000 mm
Load capacity per turntable	1000 kg
Connection power	60 W

Accessories

1690202173 Lift Adaptation Extension (1x) | for wide vehicles on narrow lifts



1690202155 Dust cover target board | Q.Lign



1690701521 Magnetic clamps for wheel bolts | 100mm



1690701508 Magnetic clamps for wheel bolts | 75mm



1690200013 ADAS target boards | for Q.Lign



1690101010 Adapter set Q.Grip | for Q.Lign | 4 pcs.



1690201055	Trolley with 27" monitor for Q.Lign	
1693770415	Printer for Beissbarth trolleys	
1690201054	Wall board for Q.Lign	
1693770644	Tablet Android 10.1"	
1690201035	Lift adaptation for Q.Lign	
1690201030	Emergency power box for Q.Lign	
1693770648	Power supply for Q.Lign Accessories 19 V RRC	
1690801048	Storage kit for 4x Q.Grip	
1690102211	Filling piece (1x) for aluminum turntable	
1693770634	Mouse and keyboard Wireless	
1692000156	Wheel chock set 2 pcs.	
1690102041	Filling piece for aluminum precision turntable	
1690102231	Inclinometer and steering wheel level Mercedes-Benz	



1690101092 Bracket set for magnetic clamps (4x) | for wall installation



1690101128 Accessory Cart | for Magnetic Clamps



1690002022 Vehicle database update Q.Lign | Key Card



1690101129 Accessory cart | MultiFit clamps



1690101127 Accessory cart | for OE quick clamps



1690101089 Mounting set for brake and steering wheel lock (2x) | for wall installation



1690101090 Mounting set for OE quick clamps (4x) | for wall installation



1690101094 Mounting set for MultiFit (4x) | for wall installation



1690203053 Battery for Q.Lign | Li-Ion | 99 Wh



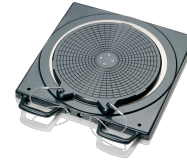
1690201069	Duo-battery charging station for Q.Lign incl. accessories	
1690701052	Drive-on ramps for two aluminum turntables	
1690402001	Protective rubber cover for aluminum turntable	
1690403001	Connecting cable for electronic turntables	
1690401011	Electronic aluminum turntable without connecting cable Standard	
1690401004	Sliding plate for rear axle long	
1690401003	Sliding plate for rear axle short	
1690311115	Set truck claws for 1 x Multi-fit clamp Truck	
1690311164	Set softline claws for 1 x Multi-fit clamp Softline rims	
1690311113	Extension set for Multi-fit clamps 23 - 28"	
1690311089	Multi-Fit wheel clamp with standard claws 13 - 22" 1pc.	



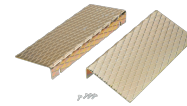
1690311112 Multi-Fit wheel clamp with standard claws | 13 - 22" | 4 pcs.



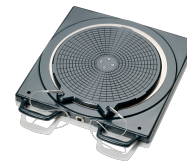
1690401028 Mechanical aluminum turntable Precision



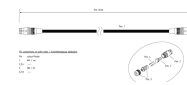
1690401008 Drive-on ramps for turntables and sliding plates



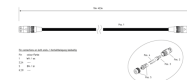
1690401013 Electronic aluminum turntable without connecting cable | Precision



1690203041 Power connection cable 15 m



1690203025 Power connection cable 10 m



1690401019 Distance bolts for quick clamp Mercedes Benz and BMW | 125 mm



1690801003 Distance bolts for quick clamp BMW | 120 mm



1690801007 Distance bolts for quick clamp Mercedes Benz | 100 mm



1690801001 Quick clamp BMW | OEM



1690801002 Quick clamp Mercedes-Benz | OEM



1690381299 Self-centering quick clamp for Ferrari



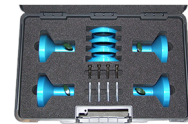
1690380161 Self-centering quick clamp for Tesla



1690380010 Self-centering quick clamp for Porsche



1690380002 Central clamp Porsche 911 GT3 and Turbo



1690301002 Central clamp Porsche Carrera GT



1690501001 Mechanical aluminum turntable Standard

