



Q.LIGN

## Wheel Aligner Q.Lign

Web-based 3D wheel aligner with Q.Grips without rim contact and Auto ID target boards

Article number: 1690200001

## Description

### The World's most innovative Wheel aligner

Q.Lign is our answer to an increasingly digital and fast-paced world: ultra fast, compact, connected

### World's First Web-based wheel aligner

- Compact web-based technology creates more space by replacing the need for trolley with PC
- Stream-to-X: Directly display the software on any TV, PC, laptop or smartphone
- Unleash the full power of connectivity by integrating Q.Lign into your daily workshop processes and systems

### Get all the speed you want without compromising on accuracy

- Ultra fast software with optimized workflow of the complete alignment process
- Q.Grip wheel clamps mounted in seconds, without any rim contact

### Full mobility, infinite possibilities

- Completely wireless thanks to high performance Li-Ion batteries
- Installation on any alignment lift type, above and inground
- Runout compensation in any lift height, from zero to top position
- Permanently use the space in front of the lift for headlight testing and ADAS calibration

### Work smarter, not harder

- Get values the second the targets are recognized to immediately spot vehicles involved in accidents
- Measure with any target on any wheel position to save time and eliminate user error
- Active lift control: Our recipe for success for straight steering wheels
- Have the values always in sight from under the vehicle with the four OLED screens on the sensor heads

### Putting the customer first

- Easy to understand printouts
- Theme-based printouts (e.g. accident report) instead of one size fits all
- Measurement of all common wheel alignment angles, including vehicle dimensions for easy detection of vehicles involved in accidents

## Scope of delivery

- 2 compact Q.Lign sensor heads with OLED displays
- Display module for direct streaming to TV, PC, laptop or tablet
- Tablet
- 2 Li-Ion batteries with charging station
- 4 Q.Grips without rim contact
- 4 targets with auto-identification
- New Generation Software
- Key Card for international vehicle specs
- Lift adaption
- Wall board for storage of sensor heads and battery charger
- Wall brackets for Q.Grips and targets
- Steering wheel and brake pedal lock
- Front turnplates

## Technical Data

Electrical connection	100 - 230 V   50 - 60 Hz   1 ph
Packaging length	1080 mm
Packaging width	960 mm
Packaging height	900 mm
Gross weight	100 kg
Measuring system	3D
Weight	80 kg
Packaging unit	1 Palette(n)
Data transmission type	kabellos
Power consumption	45 W
Accumulator power (electric charge)	99 Wh
Min. tyre size	525 mm
Max. tyre size	835 mm
Max. wheel base	5000 mm
Load capacity per turntable	1000 kg

## Accessories

1690202173 Lift Adaptation Extension (1x) | for wide vehicles on narrow lifts



1690101083 Set 4x Magnetic clamp for light trucks and RVs | 6x130mm & 6x205mm bolt circles



1690102213 Steering wheel holder



1690102212 Brake lock



1690102211 Filling piece (1x) for aluminum turntable

		
1690801048	Storage kit   for 4x Q.Grip	
1690202155	Dust cover target board   Q.Lign	
1690701521	Magnetic clamps for wheel bolts   100mm	
1690701508	Magnetic clamps for wheel bolts   75mm	
1692000221	Set of Drive-on ramps   for RaceScales	
1690400100	RaceScales   VAS 701009   Precision turntable with load cells   433Mhz	
1690200013	ADAS target boards   for Q.Lign	
1690101010	Adapter set Q.Grip   for Q.Lign   4 pcs.	
1690201055	Trolley with 27" monitor   for Q.Lign	

1690101077	Set 4x wall bracket   Q.Grip	
1690201122	Inground lift adaptation   for Q.Lign   1x	
1690101094	Mounting set for MultiFit (4x)   for wall installation	
1693770634	Mouse and keyboard   Wireless	
1693740003	Ballast bag 20 kg	
1693740001	Ballast bag 5 kg	
1692000156	Wheel chock set 2 pcs.	
1690102041	Filling piece for aluminum precision turntable	
1690102231	Inclinometer and steering wheel level   Mercedes-Benz	
1690101092	Bracket set for magnetic clamps (4x)   for wall installation	
1690101128	Accessory Cart   for Magnetic Clamps	



---

1690002022 Vehicle database update Q.Lign | Key Card



---

1690101129 Accessory cart | MultiFit clamps



---

1690101127 Accessory cart | for OE quick clamps



---

1690101089 Mounting set for brake and steering wheel lock (2x) | for wall installation



---

1690101090 Mounting set for OE quick clamps (4x) | for wall installation



---

1693770415 Printer for Beissbarth trolleys



---

1690201054 Wall board for Q.Lign



---

1693770644 Tablet | Android | 10.1 "



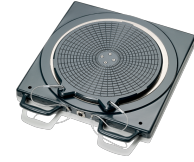
---

1690301002 Central clamp Porsche Carrera GT



---

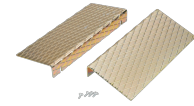
1690401013 Electronic aluminum turntable without connecting cable | Precision



1690701127 Extension for vehicles with narrow track width or RVs



1690401008 Drive-on ramps for turntables and sliding plates



1690701052 Drive-on ramps for two aluminum turntables



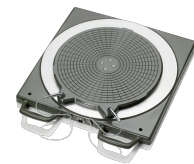
1690402001 Protective rubber cover for aluminum turntable



1690403001 Connecting cable for electronic turntables



1690401011 Electronic aluminum turntable without connecting cable | Standard



1690311115 Set truck claws for 1 x Multi-fit clamp | Truck



1690311164 Set softline claws for 1 x Multi-fit clamp | Softline rims



1690311113 Extension set for Multi-fit clamps | 23 - 28"



1690311089 Multi-Fit wheel clamp with standard claws | 13 - 22" | 1pc.



1690311112	Multi-Fit wheel clamp with standard claws   13 - 22"   4 pcs.	
1690380002	Central clamp Porsche 911 GT3 and Turbo	
1690380010	Self-centering quick clamp for Porsche	
1690380161	Self-centering quick clamp for Tesla	
1690201035	Lift adaptation for Q.Lign	
1690201030	Emergency power box for Q.Lign	
1693770648	Power supply for Q.Lign Accessories   19 V RRC	
1690203053	Battery for Q.Lign   Li-Ion   99 Wh	
1690201069	Duo-battery charging station for Q.Lign   incl. accessories	
1690203041	Power connection cable 15 m	
1690203025	Power connection cable 10 m	
1690401019	Distance bolts for quick clamp Mercedes Benz and BMW   125 mm	



---

1690801003 Distance bolts for quick clamp BMW | 120 mm



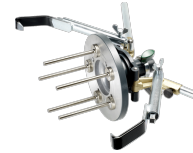
---

1690801007 Distance bolts for quick clamp Mercedes Benz | 100 mm



---

1690801001 Quick clamp BMW | OEM



---

1690801002 Quick clamp Mercedes-Benz | OEM



---

1690381299 Self-centering quick clamp for Ferrari



---

1690501001 Mechanical aluminum turntable Standard

